



T8

14.5T8/MAS/48-830/MF20/P/DIM 25/1

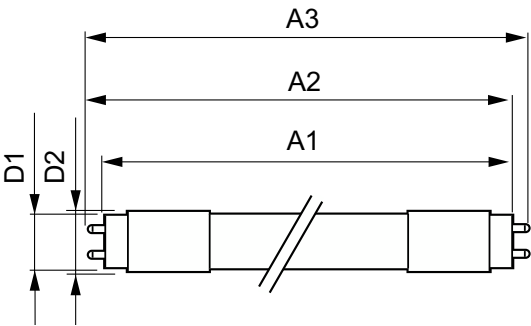
Our TLEDs are available in InstantFit (Type A / Type C) or MainsFit (Ballast bypass / Type B) versions. The InstantFit lamps work on a broad variety of ballasts and LED drivers. Only InstantFit has over 15,000 lamp & ballast combinations delivering even light output, energy savings and a long lifetime. Our MainsFit products feature a double-ended design, simplifying installation while a proprietary safety circuit minimizes a shock risk. Lamp sizes range from 2-foot to 8-foot and U-bend with a variety of lumen outputs.

Product data

General information		Power (Rated) (Nom)		14.5 W
Base	G13 [Medium Bi-Pin Fluorescent]	Lamp Current (Max)	125 mA	
EU RoHS compliant	Yes	Lamp Current (Min)	58 mA	
Nominal Lifetime (Nom)	70000 h	Starting Time (Nom)	0.5 s	
Switching Cycle	50000X	Warm Up Time to 60% Light (Nom)	0.5 s	
Tier	MasterClass	UL Type	TLED_Type B; UL classified double end	
Light technical		Power Factor (Nom)	0.9	
Color Code	830 [CCT of 3000K]	Voltage (Nom)	120-277 V	
Beam Angle (Nom)	180 °	Temperature		
Initial lumen (Nom)	2000 lm	T-Ambient (Max)	113 °F	
Color Designation	White (WH)	T-Ambient (Min)	-4 °F	
Correlated Color Temperature (Nom)	3000 K	T-Storage (Max)	149 °F	
Luminous Efficacy (rated) (Nom)	137.00 lm/W	T-Storage (Min)	-40 °F	
Color Consistency	6SCDM	T-Case Maximum (Nom)	158 °F	
Color Rendering Index (Nom)	80	Controls and dimming		
LLMF At End Of Nominal Lifetime (Nom)	70 %	Dimmable	Only with specific dimmers	
Operating and electrical				
Input Frequency	50 to 60 Hz			

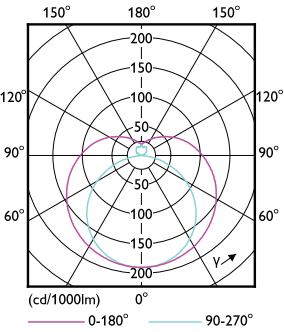
Mechanical and housing	
Bulb Finish	Frosted
Bulb Material	Plastic
Product Length	47-1/4 in
Bulb Shape	Tube, double-ended
Approval and application	
Energy Saving Product	Yes
Approbation Marks	RoHS compliance UL certificate DLC compliance

Dimensional drawing



14.5T8/MAS/48-830/MF20/P/DIM 25/1

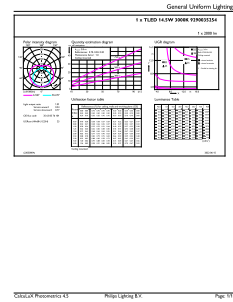
Photometric data



Light Distribution Diagram

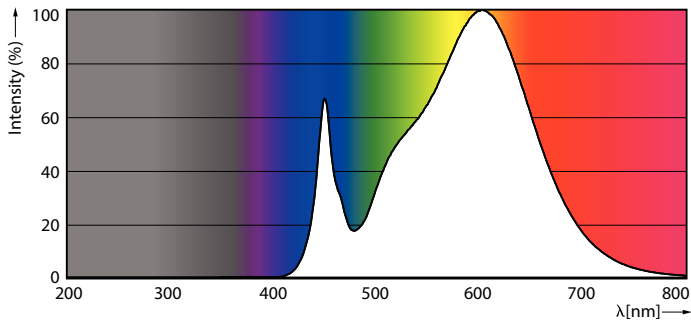
Product data	
Order product name	14.5T8/MAS/48-830/MF20/P/DIM 25/1
EAN/UPC - Product	046677579470
Order code	579474
Numerator - Quantity Per Pack	1
Numerator - Packs per outer box	25
Material Nr. (12NC)	929003525404
Net Weight (Piece)	0.463 lb
Model Number	9290035254

Product	D1	D2	A1	A2	A3
14.5T8/MAS/48-830/MF20/P/DIM 25/1	1-1/16 in	1-1/8 in	47-3/16 in	47-1/2 in	47-3/4 in



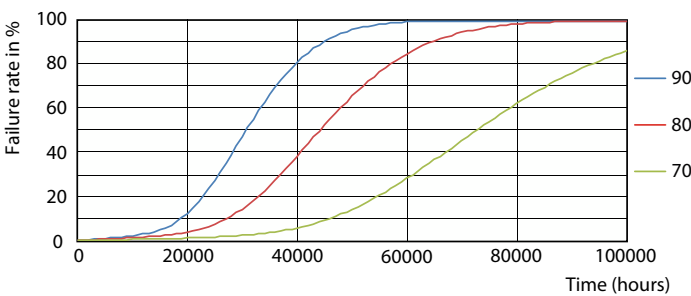
General uniform lighting

Photometric data

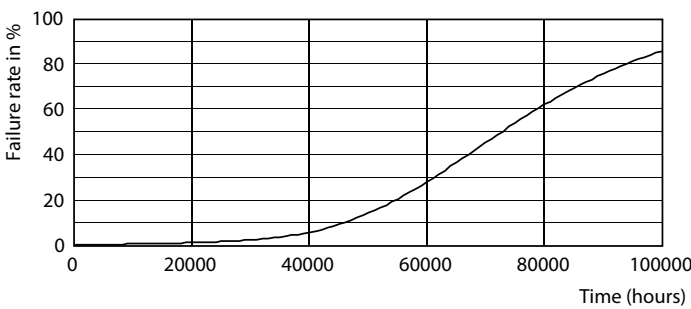


Spectral Power Distribution Colour

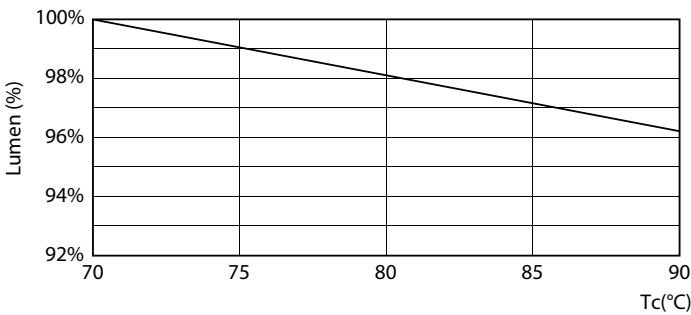
Lifetime



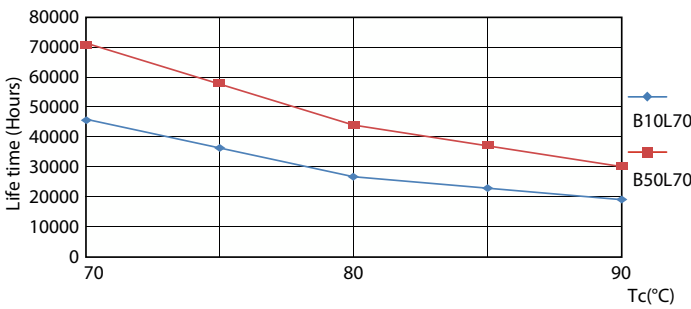
FailureRate



Life Expectancy Diagram



LumenVsTc



LifetimeVsTc

Lifetime



Lumen Maintenance Diagram

