

DESCRIPTION

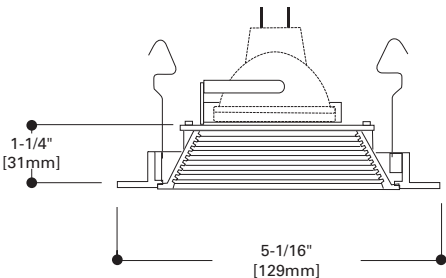
Baffle trim for 12V low voltage 4" H1499 family recessed housings. Die cast trim ring with Coilex® baffle. Reflector and trim ring available in a variety of finishes. Three "cat's paw" springs secure trim in housing.

DESIGN FEATURES

Cast aluminum trim ring available in Matte White, Silver, Polished Brass, Black Chrome, Satin Nickel, Antique Copper or Tuscan Bronze finishes. Baffle available in Black or White. Three pressure springs ensure positive retention in housing.

1493 is designed for use with the following small aperture housings;

- Low Voltage Housing
 - H1499T 50W 12V MR16
 - H1499RT 50W 12V MR16
 - H1499ICT 50W 12V MR16
 - H1499T75 75W 12V MR16



Trim

- 1493P= Black Baffle, White Trim Ring
1493W= White Baffle, White Trim Ring
1493PB= Black baffle, Polished Brass Trim Ring
1493SL= Black Baffle, Silver Trim Ring
1493BC= Black Baffle, Black Chrome Trim Ring
1493SN= Black Baffle, Satin Nickel Trim Ring
1493AC= Black Baffle, Antique Copper Trim Ring
1493TBZ= Black Baffle, Tuscan Bronze Trim Ring

Catalog #		Type
Project		
Comments		Date
Prepared by		



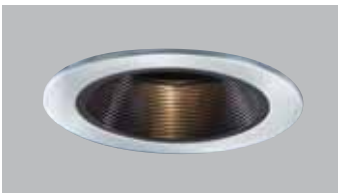
1493P
Black Baffle with
White Trim Ring



1493W
White Baffle with
White Trim Ring



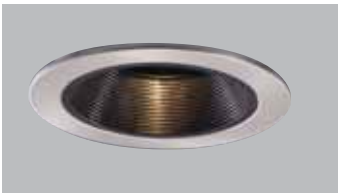
1493PB
Black Baffle with
Polished Brass Trim Ring



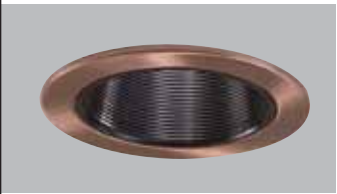
1493SL
Black Baffle with Silver Trim Ring



1493BC
Black Baffle with
Black Chrome Trim Ring



1493SN
Black Baffle with
Satin Nickel Trim Ring



1493AC
Black Baffle with
Antique Copper Trim Ring



1493TBZ
Black Baffle with
Tuscan Bronze Trim Ring

1493
Reflector Trim

4" TRIMS