



T8

14T8/COR/48-835/IF21/G/DIM/BAA 25/1

Philips is proud to offer BAA (Buy American Act) compliant InstantFit (UL Type A/ Ballast compatible) T8 LED lamps. This product is proudly manufactured in the USA and is BAA (Buy American Act) compliant. This product can replace either T8 or T12 lamps in fixtures containing shunted or non-shunted G13 (medium bi-pin) lamp holders. The 4ft lamps are available in two lumen packages and three CCT options.

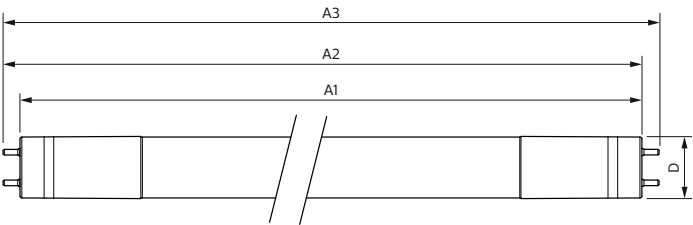
Product data

| | | | | |
|---------------------------------------|----------------------------------|--|----------------------------|--------|
| General information | | Lamp Current (Max) | | 400 mA |
| Base | G13 [Medium Bi-Pin Fluorescent] | Lamp Current (Min) | 100 mA | |
| EU RoHS compliant | Yes | Wattage Equivalent | 32-30-28-25 W | |
| Nominal Lifetime (Nom) | 50000 h | Starting Time (Nom) | 0.5 s | |
| Switching Cycle | 50000 | Warm Up Time to 60% Light (Nom) | 0.5 s | |
| Buy American Compliant Products | Yes | UL Type | TLED_Type A; UL listed HF | |
| Tier | CorePro | Power Factor (Nom) | 0.9 | |
| Light technical | | Voltage (Nom) | 120-277, 347 V | |
| Color Code | 835 [CCT of 3500K] | Temperature | | |
| Beam Angle (Nom) | 240 ° | T-Ambient (Max) | 113 °F | |
| Initial lumen (Nom) | 2100 lm | T-Ambient (Min) | -4 °F | |
| Color Designation | White (WH) | T-Storage (Max) | 149 °F | |
| Correlated Color Temperature (Nom) | 3500 K | T-Storage (Min) | -40 °F | |
| Luminous Efficacy (rated) (Nom) | 150.00 lm/W | T-Case Maximum (Nom) | 122 °F | |
| Color Consistency | <6 | Controls and dimming | | |
| Color Rendering Index (Nom) | 80 | Dimmable | Only with specific dimmers | |
| LLMF At End Of Nominal Lifetime (Nom) | 70 % | Mechanical and housing | | |
| Operating and electrical | | Bulb Finish | Frosted | |
| Input Frequency | 20K to 120K Hz | Bulb Material | Glass | |
| Power (Rated) (Nom) | 14 W | | | |

| | |
|--------------------------|---|
| Product Length | 47-1/4 in |
| Bulb Shape | Tube, double-ended |
| Approval and application | |
| Energy Saving Product | Yes |
| Approbation Marks | RoHS compliance UL certificate DLC compliance |
| Product data | |
| Order product name | 14T8/COR/48-835/IF21/G/DIM/BAA 25/1 |

| | |
|---------------------------------|--------------|
| EAN/UPC - Product | 046677576806 |
| Order code | 576801 |
| Numerator - Quantity Per Pack | 1 |
| Numerator - Packs per outer box | 25 |
| Material Nr. (12NC) | 929003144804 |
| Net Weight (Piece) | 0.454 lb |
| Model Number | 9290031448 |

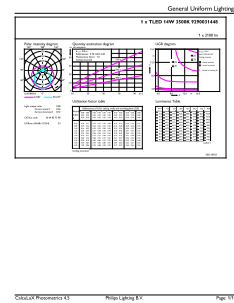
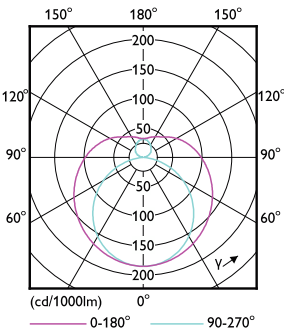
Dimensional drawing



| Product | D1 | D2 | A1 | A2 | A3 |
|---|-----------|-----------|------------|-----------|-----------|
| 14T8/COR/48-835/ IF21/G/DIM/BAA 25/1 | 1-1/16 in | 1-1/16 in | 47-3/16 in | 47-1/2 in | 47-3/4 in |

14T8/COR/48-835/IF21/G/DIM/BAA 25/1

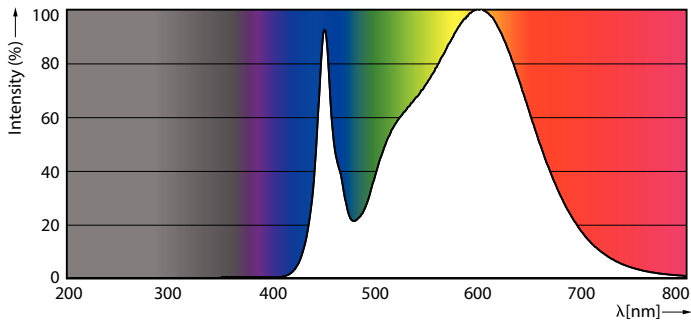
Photometric data



LEDtube COR NAM 14W G13 2100lm-LDD

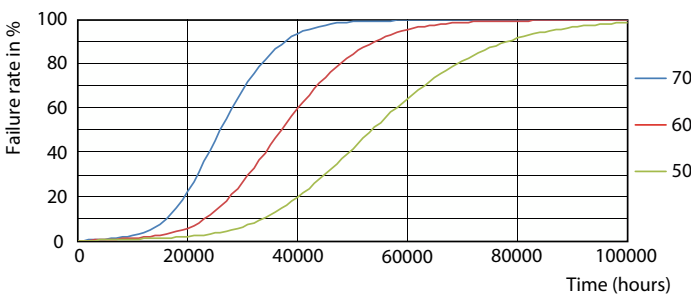
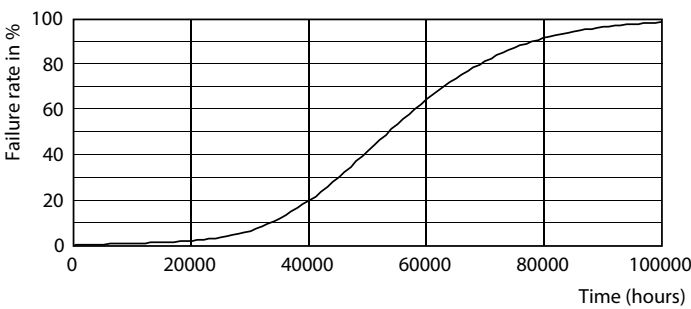
LEDtube COR NAM 14W G13 2100lm 835-GUL

Photometric data

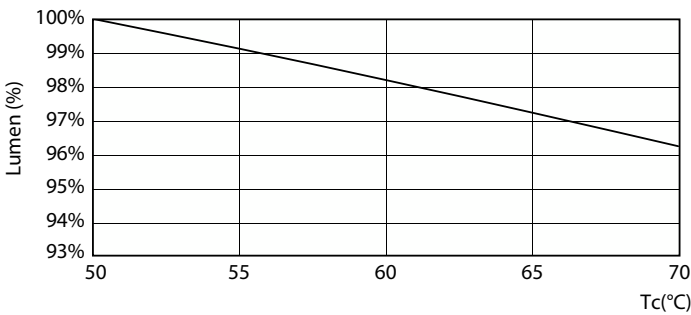


LEDtube COR NAM 10,5W G13 1550lm 835-POC

Lifetime

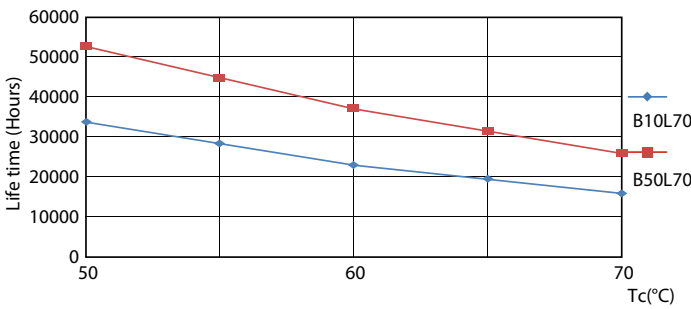


Life Expectancy Diagram



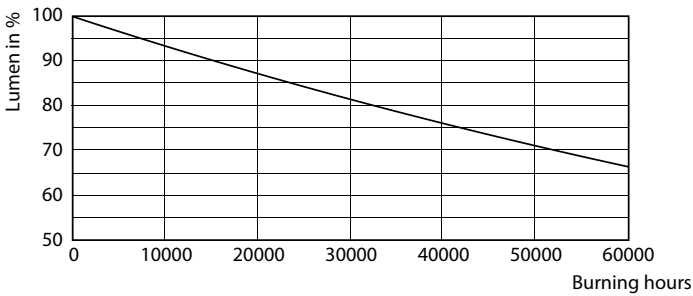
LEDtube COR NAM 14W 50K LumenVsTc-LMP

FailureRate



LifetimeVsTc

Lifetime



Lumen Maintenance Diagram

