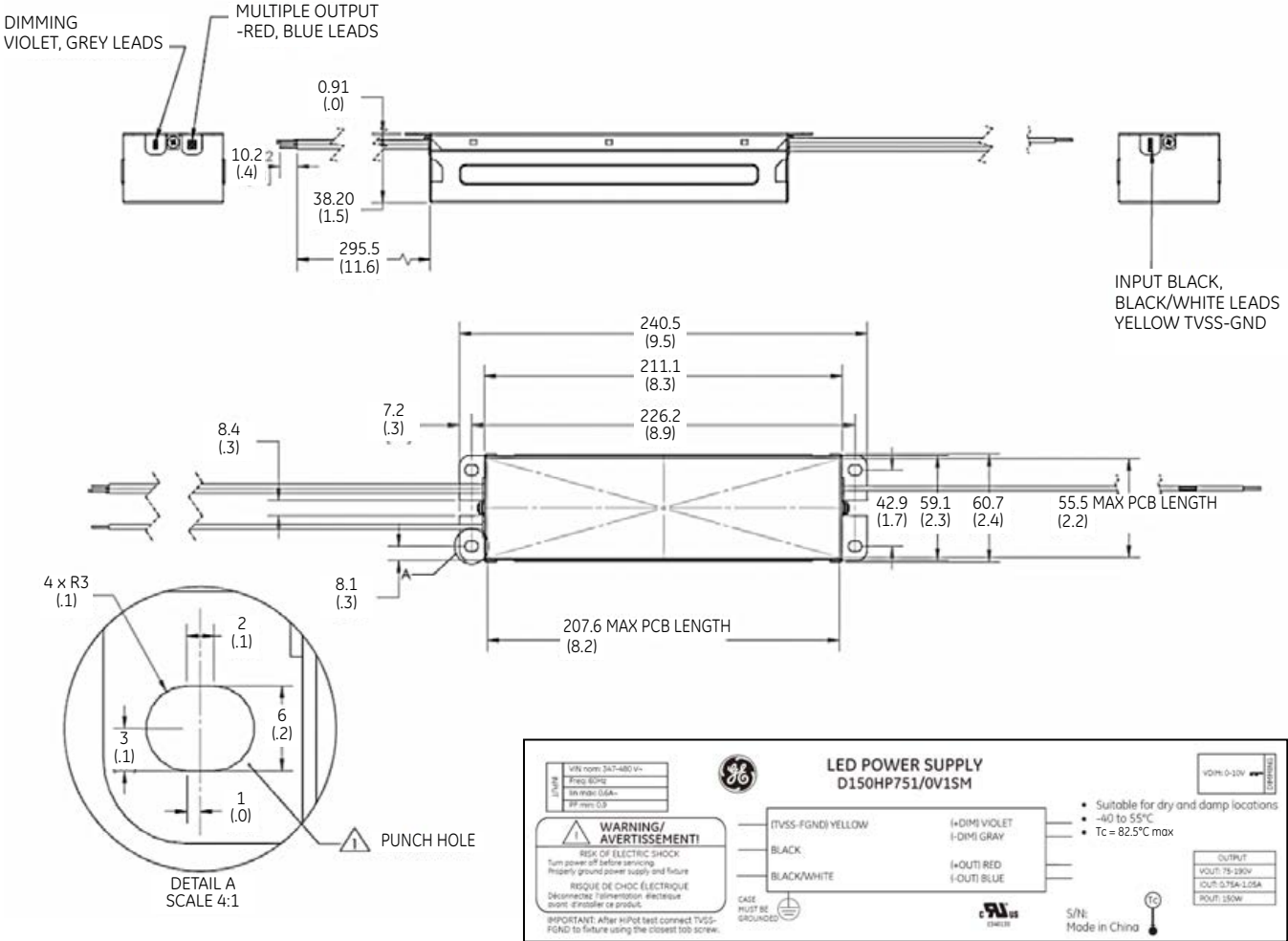


Product Dimensions  
42272 - D150HP751/0V1SM

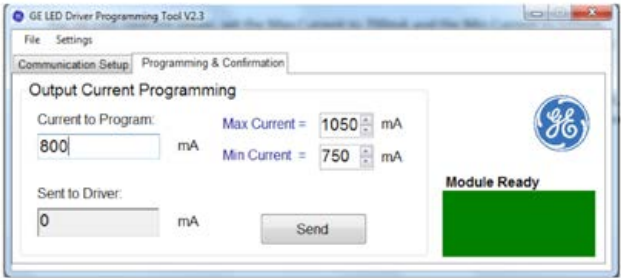


GE  
Lighting

LED Power Supply  
LED Driver  
(42272 - D150HP751/0V1SM)

Current Programming Interface

Firstly set the Max Current to 1050mA and the Min Current to 750mA in the input box, then put the value to be programmed (between 750mA to 1050mA) into the input box for Current to Program, finally click the Send button to complete the programming of driver.



www.gelighting.com

GE and the GE Monogram are trademarks of the General Electric Company. All other trademarks are the property of their respective owners. Information provided is subject to change without notice. All values are design or typical values when measured under laboratory conditions. GE Lighting and GE Lighting Solutions, LLC are businesses of the General Electric Company. © 2015 GE.

OLP0000 (Rev 04/24/15)



imagination at work

LED Driver

42272 - D150HP751/0V1SM

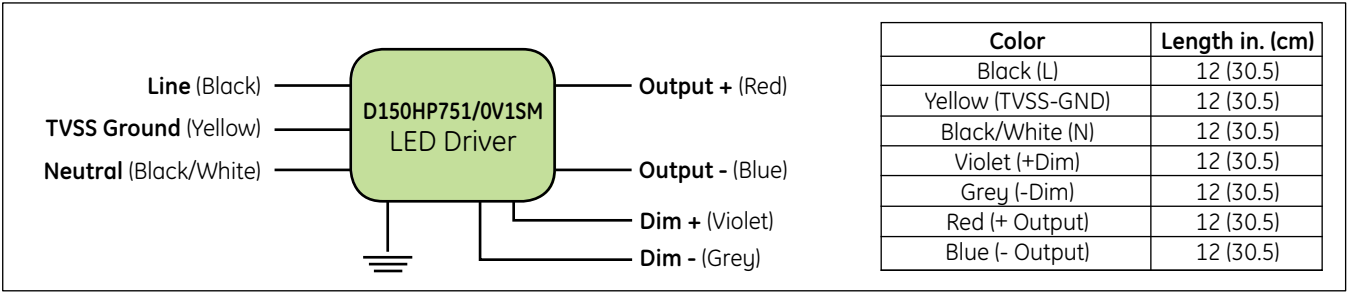
Description: 150W 0.75A~1.05A Dimmable/Programmable Class 1 PSU

Input Voltage: 347V/480V

Input Frequency: 60Hz



Output Power (W)	Output Current (A)	Output Voltage (V)	Efficiency @ Full Load	Max Input Current (A)	Input Power (W)	THD @ 75W Po	PF @ 75W Po	Inrush Current (A/ms)	Surge Protection (kV/kA)	Weight (lbs/kg)
150	0.75-1.05 ± 5%	75-190	>90%	0.50 @ 347V	166	<20%	>0.9	See Page Below	6/3	2.2/1
				0.40 @ 480V						



Product Features

Physical

- Unit must be installed within an electrical enclosure.
- Enclosure wiring must be rated to 600V & 105°C or higher.

Performance

- The unit is classified as Class 1 as stipulated in UL8750.
- Dimming circuit is classified as Class 2 as stipulated in UL1310.
- Minimum ambient operating temperature: -40°C.
- Maximum allowable casing temperature: 82.5°C.
- For reliability and failure rate information, contact LED Outdoor Electronics Team.
- The unit is UL certified for operation in dry/damp locations (Outdoor Type 1).
- The unit is tolerant of extended open circuit and short circuit conditions.
- The unit is compliant to FCC Title 47 Part 15 Class A.
- The unit is resistant to surges as per IEEE/ANSI C62.41.2-2002 Location C-Low (6kV/3kA).
- The unit cannot be hot plug-in at output side.

UL Conditions of Acceptability – E340135

- The unit has been examined to comply with Class 1 Output Criteria
- The unit is only to be used in dry or damp locations
- The metal casing must be connected to **EARTH**.
- TVSS-GND (Yellow wire) shall be connected to fixture ground after hi-pot test using closest tab screw. **THIS IS NOT A SAFETY GROUND!**

Isolation Voltage (Vrms)				
Isolation	Input Wires	Output Wires	1-10V Wires	Chassis
Input Wires	NA	2500	2500	2500
Output Wires	2500	NA	2500	2500
1-10V Wires	2500	2500	NA	500
Chassis	2500	2500	500	NA

Input Inrush Current		
Input Voltage (V <sub>rms</sub> )	Peak Current Pulse (A <sub>pk</sub> )	Pulse Duration (50% of Peak) (ms)
347	31	0.1ms
480	38.5	0.1ms

Input Ground Leakage Current	
Input Voltage (V <sub>rms</sub> )	Leakage Current (mA)
347	0.43
480	0.59

Dimming Function			
Dimming Method	Isolation	Dimming Range (%)	Current Source
1-10V	Class 2	100% - 10%	0.5mA

Technical Information

42272 - D150HP751/0V1SM

