

SORAA® VIVID 2

LED MR16 2700K 12VAC 10-12W



Narrow Flood and Flood



Narrow Spot and Spot



red dot design award
winner 2013



RoHS

OUTPUT	1400-6300 CBCP, 370-430 Lumens
BEAM	10°, 20°, 25°, 36°
COLOR	CCT: 2700K CRI>95, R9>95
APPLICATION	Halogen replacement for enclosed indoor and outdoor applications

PERFORMANCE

CBCP matches standard halogen lamps
Single light source
Single crisp shadow
Dimmable to 20%
Power Factor: 0.93
12V (10.8 min, 13.2 max)

COLOR

CCT: 2700K
CRI>95, R9 95
White point accuracy within 3 SDCM
Rich saturated color rendering
Excellent color stability

OPTIMIZED FORM

ANSI standard MR16 form factor:
1.96" (50mm) W x 1.86" (47.6mm) H
Compatible with standard fixtures
Weight: 40g
Proprietary fanless aluminum design
provides superior thermal dissipation

HIGHLY COMPATIBLE

Works with magnetic and electronic
transformers and dimmers (see complete
list at www.soraa.com)
UL and CUL listed for use with 12VAC NEC
Class 1 and Class 2 systems

SPECIFICATIONS*

Reference Number	Product Code	Beam	Field	CBCP	Watts	Halogen Equivalent**	Lumens
MR16-50-B01-12-927-10	00271	10°	20°	6300	10	50w	370 (37.5 lm/W)
MR16-50-B01-12-927-20	00231	20°	38°	2800	11.5	65w	430 (37.5 lm/W)
MR16-65-B01-12-927-25	00247	25°	42°	2540	11.5	65w	430 (37.5 lm/W)
MR16-65-B01-12-927-36	00255	36°	60°	1400	11.5	65w	430 (37.5 lm/W)

*at stable warm operating conditions (25°C ambient) **Energy Star Minimum

LONG LIFE, LOW MAINTENANCE

Lifetime of 25,000 hours, L70
Three year warranty

ENERGY EFFICIENT

Saves over 75-80% of energy compared to
standard halogen lamps
Typical payback of one year or less

INTENDED USE AND APPLICATIONS

LED retrofit lamp to replace 12VAC
halogen MR16 lamps in recessed
downlights, track lighting, and other
indoor applications

Not for use with glass lenses or fully
sealed fixtures

Not for use in non-ventilated fixtures less
than 3"L x 3"W x 3"H.

Not for use in Emergency Fixtures or Exit
Signs

Operating Temperature: Minimum -40°C
(ambient); Typical: 80-110°C (base);
Maximum: 125°C (base)

Soraa lamps are designed to safely shut
down due to conditions in any thermal
environment not conducive to minimum
airflow or proper ventilation

CERTIFICATIONS

UL, CUL for 12VAC NEC Class 1 and Class
2 systems, FCC 47 CFR Part 15 and Part 18
(EMI), RoHS, CE, C-tick

12VAC



2700K

CRI
>95

R9
>95



DIM



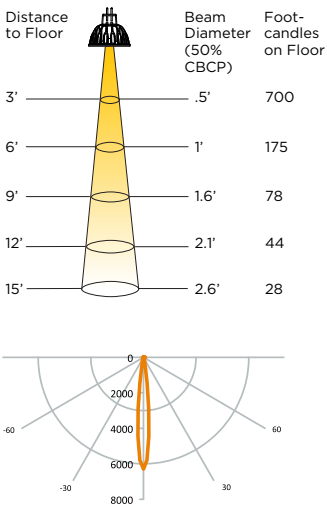
Form Factor | Base | Voltage | CRI | CCT | Beam
MR16 - 65 - B01 - 12 - 927 - 25

The diagram at left shows how to read the
different components of the reference number.
Base type B01 refers to the GU 5.3 base.

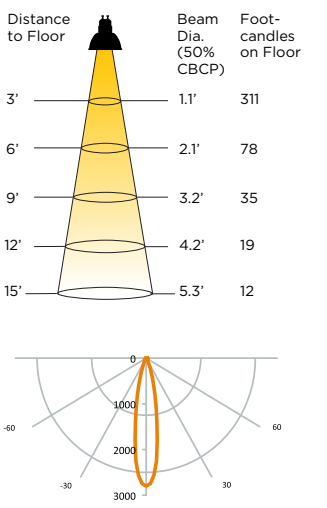
SORAA VIVID 2 MR16 LED 2700K 12VAC 10-12W

PHOTOMETRICS

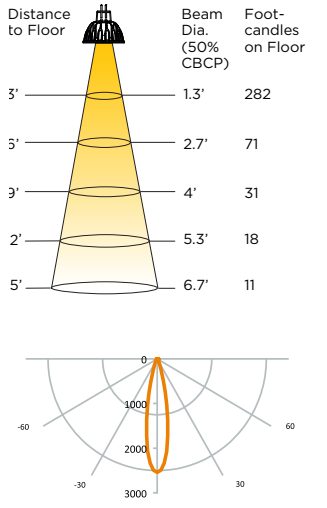
Narrow Spot - 10°



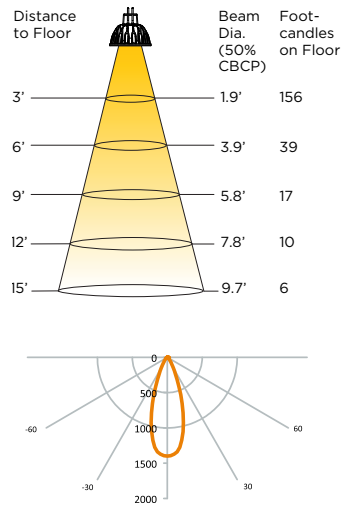
Narrow Flood - 20°



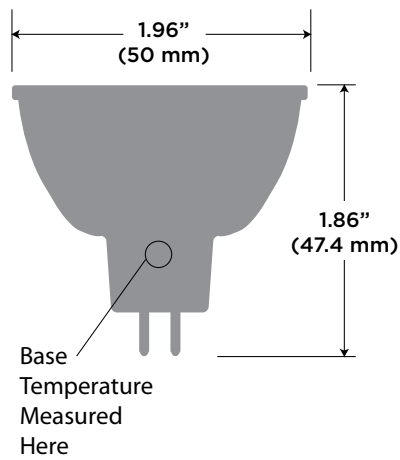
Narrow Flood -25°



Flood -36° Degree

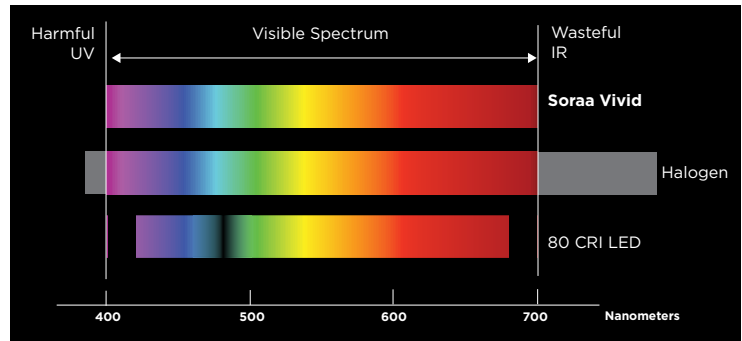
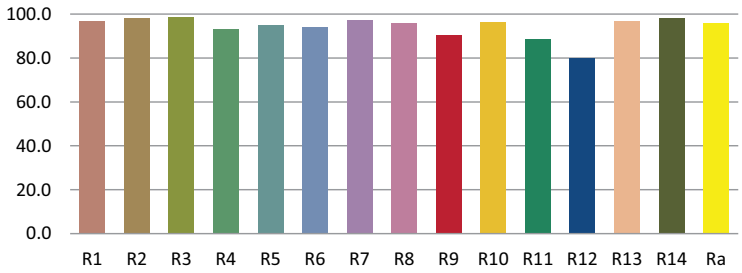


DIMENSIONS



COLOR RENDERING

CRI- Relative R Values



SORAA HIGHLY CONFIDENTIAL

As consideration for receiving the initial release of the SORAA Data Sheet, Company acknowledges and agrees not to use any confidential information associated with the SORAA Data Sheet provided to Company by SORAA for its own use or for any purpose other than to evaluate, carry out discussions concerning, and the undertaking of, a mutually beneficial relationship ("Relationship") between SORAA and Company. Company shall not disclose or permit disclosure of any Confidential Information of SORAA to third parties or to employees of the Company, other than directors, officers, employees, or consultants, of the Company who are strictly required to have the confidential information in order to carry out the discussions regarding and the evaluation of the Relationship. Company strictly agrees that it shall take reasonable measures to protect the secrecy of and avoid disclosure or use of confidential information of SORAA in order to prevent it from falling into the public domain or the possession of persons other than those persons authorized under this Agreement to have any such information.

SAFETY NOTE ON HEAT

Soraa's unique LED technology allows its lamps to operate effectively and efficiently at higher temperatures than other LED lamps, resulting in more light output per diode. Although Soraa's lamps operate at cooler temperatures than halogen lamps, it is recommended that gloves be worn when handling bare lamps that have been energized.

TRANSFORMER/DIMMER COMPATIBILITY

Dimmable to 20% or lower, depending on dimmer. Complete transformer and dimmer compatibility information at www.soraa.com.