

# SOLIDRIVE

## CONSTANT VOLTAGE LED DRIVER



CLASS P

RoHS  
Compliant

CLASS 2

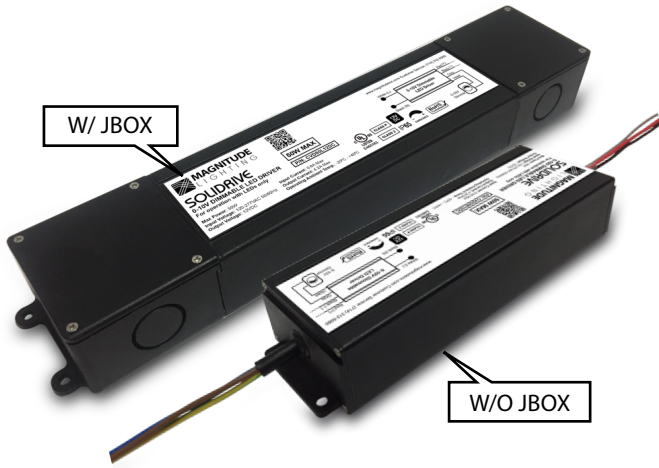
IP65

120-277V

60W  
MAX

24V  
DC

P/N: CVN60x24DC

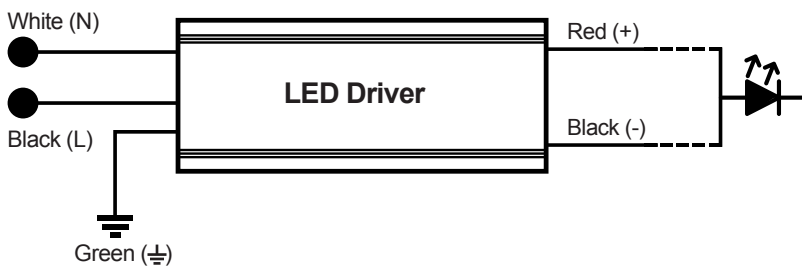


The SoliDrive Series of Constant Voltage Class 2 LED Drivers from Magnitude Lighting offers both UL Listed and UL Recognized style enclosures. The UL Listed type enclosure has a built-in junction box on both the input and output. These drivers are IP65 rated and are suitable for both indoor and outdoor installations. With universal input voltage ranging from 120 to 277VAC, the SoliDrive series of drivers are designed for commercial, industrial and residential applications. As always, 5-year warranty is a standard on all of Magnitude's products.

### QUICK SPECS

Input Voltage	Max Output Power	Output Voltage	Output Current	Efficiency @ Max Load	THD @ Max. Load	Power Factor @ Max. Load	Envir. Protection Rating
120-277VAC	60W	24VDC	2600mA	> 87%	< 20%	> 0.95	IP65

### WIRING DIAGRAM



### FEATURES

- UL Listed Enclosure – With Built-In Junction Boxes
- Universal Input Voltage
- Ripple Free
- IP65 – For Both Indoor and Outdoor Use
- No Minimum Load Requirement
- UL 8750 Approved
- Class 2, Class P
- Auto-Reset Protection for Short Circuit & Over-Temperature
- Over Load Protection – CC Mode

### ENCLOSURE DETAILS In. (mm)

	L- With a Jbox	R-Without a Jbox
Length	11.4 (290.5)	6.8 (172)
Mounting Length	12.1 (307.9)	7.5 (191.6)
Width	2.36 (59.9)	2.36 (59.9)
Height	1.4 (35)	1.4 (35)

Part number: CVN60x24DC

L - with a Jbox  
R - without a Jbox

D - Dimmable  
N - Non Dimmable

### SPECIFICATIONS

#### Input

Input Voltage Range	120 - 277VAC $\pm$ 10%
Input Frequency	50 / 60Hz
Input current	0.96A Max
Inrush Current	5A Max @ 120V / 30A Max @ 277V Complies to NEMA 410
Efficiency	> 87% Max
Power Factor	> 0.95
THD	< 20%

#### Output

Output Voltage	24VDC
Output Current	2600mA Max
Output Ripple	< 3%
Line Regulation	< 2%
Load Regulation	< 3%
Turn On Delay Time	< 0.3 Sec

#### Environmental Specification

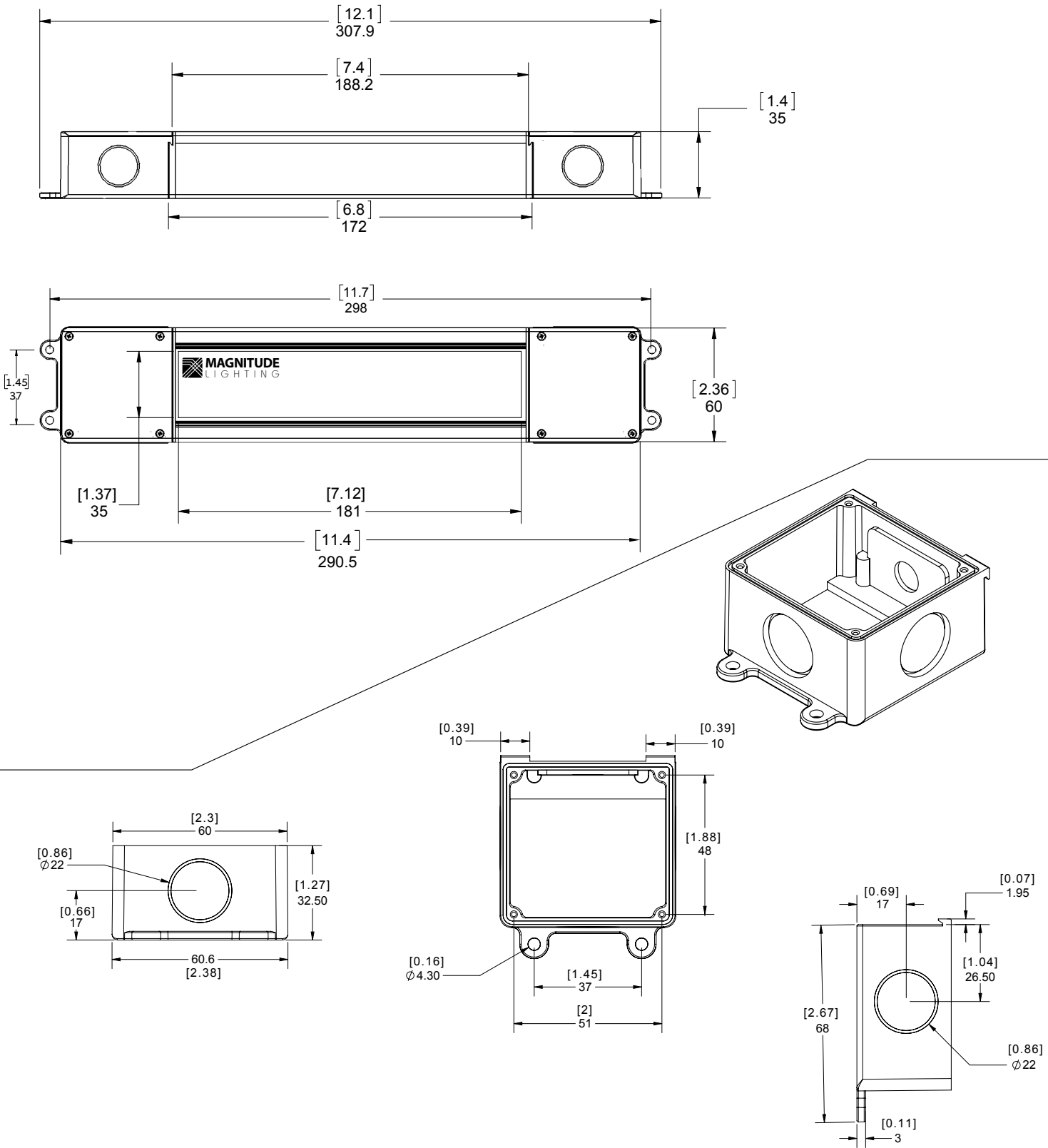
Env. Protection Rating	IP65
Operating Ambient temperature	-25°C - +40°C
Max Case Temp. (Tcase)	80°C
Storage temperature	-40°C - +85°C
Expected life time	50K Hours ( > 65°C ) Tc
Audible Noise	< 24db Class A

#### Protections Specification

Over Current Protection	Yes
Over Voltage Protection	Yes
Over Temperature Protection	Yes; Hiccup mode
Over Load Protection	Yes / Current limit
Short Circuit Protection	Yes; Current limit

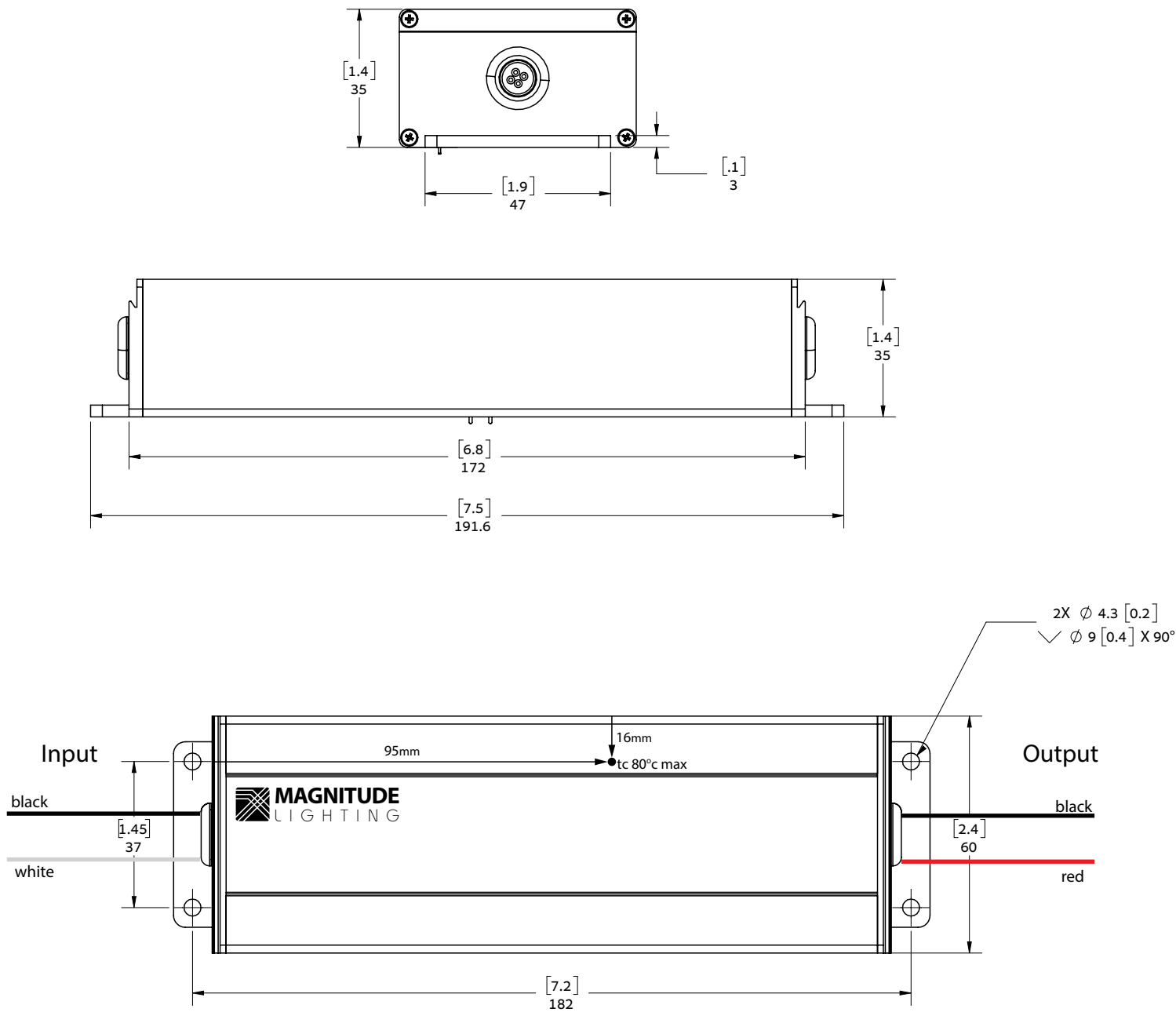
MECHANICAL DIAGRAM

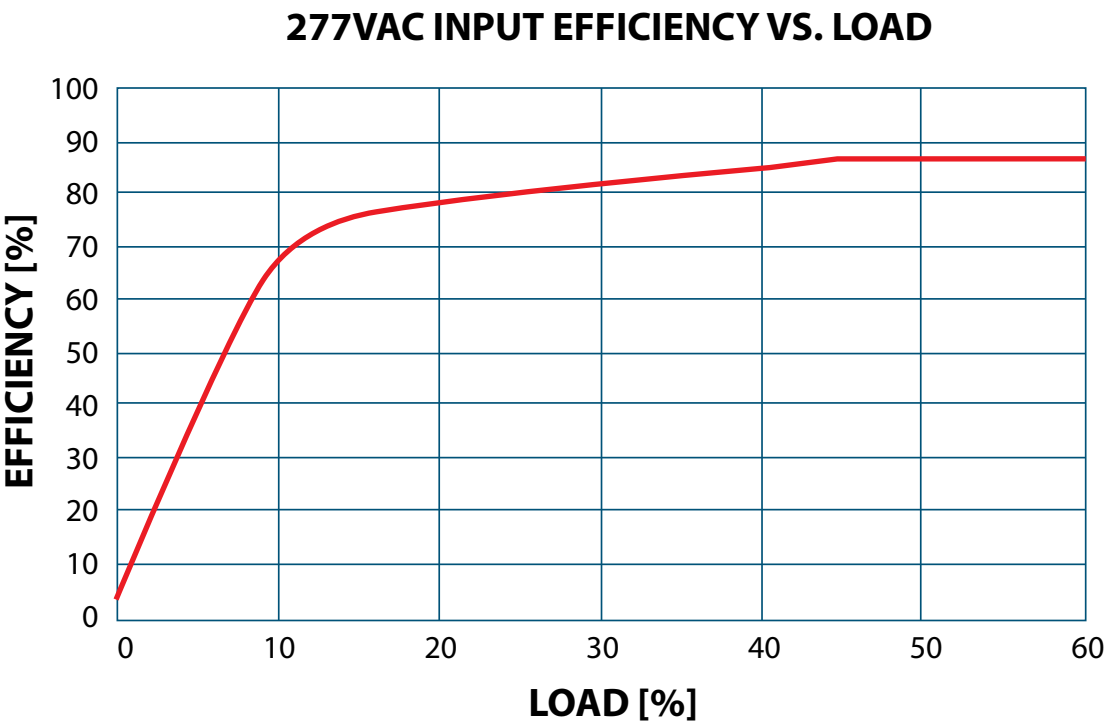
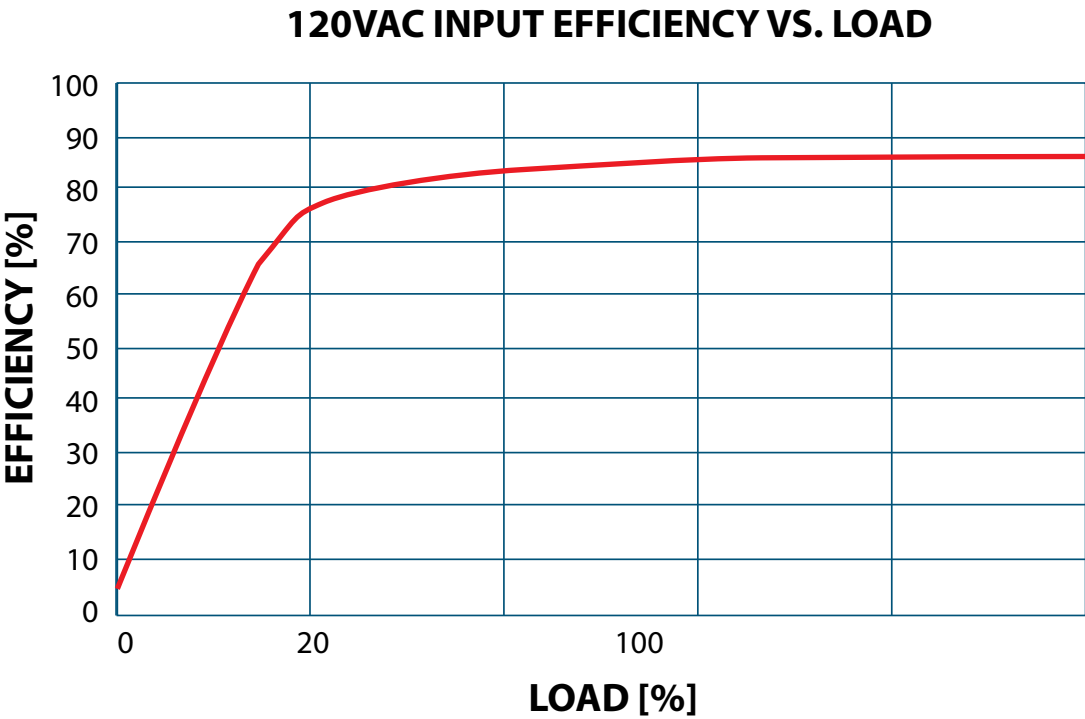
CVN60L24DC - ENCLOSURE WITH JUNCTION BOXES



MECHANICAL DIAGRAM

CVN60R24DC - ENCLOSURE





FLICKER PERFORMANCE

The IEEE P1789 flicker test results are presented with no observable effect (in green) low-risk (in yellow) and high risk (in red).

Tested with: Acclaim Lighting, Model: FLX592, 96W MAX & 24V Output

