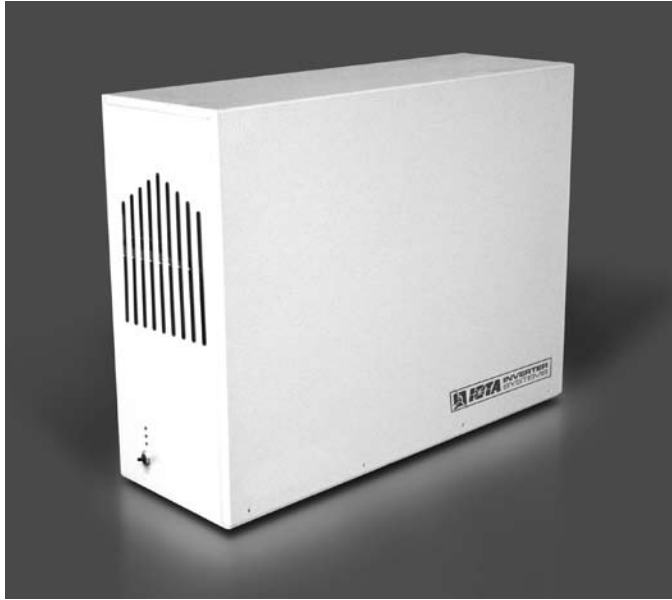


IIS-375-I

INTERRUPTIBLE 375 WATT UNIT EQUIPMENT



DESCRIPTION

The IOTA **IIS-375-I** is a UL Listed stand-alone sine wave output inverter designed to provide power to designated emergency lighting fixtures. In a power loss situation, the IOTA **IIS-375-I** will supply **375W** of power from the onboard battery supply. The IOTA **IIS-375-I** works in conjunction with incandescent, LED, and fluorescent lamp and fixture types and will automatically run switched, normally-on, or normally-off designated emergency fixtures. The **IIS-375-I** is ideal for applications requiring an emergency source for lighting arrangements that utilize multiple lamp and fixture types. The **IIS-375-I** is available in a surface mount housing and comes with a three-year warranty and seven-year pro-rata battery warranty.

LOAD CAPABILITY

375W

LAMPS OPERATED

Incandescent

LED

Fluorescent lamps and ballast combinations, incl. dimming ballasts

COMPONENTS

High-efficiency pure sine wave inverter

Variable-rate, temperature-compensated charger

12V oversized Valve Regulated Lead Acid (VRLA) battery

CONSTRUCTION

16-gauge steel housing

Surface mount design

DIMENSIONS AND WEIGHT

IIS-375-I

23" x 17.83" x 8.2"

114 lbs

375W LOAD CAPABILITY

Operates
**INCANDESCENT
LED
FLUORESCENT FIXTURES**

FEATURES

- UL 924 Listed



- Emergency lighting supplied from one convenient source
- Pure sine wave output
- Operates incandescent, LED, and fluorescent fixtures including fixtures with dimmable fluorescent ballasts
- Includes momentary contact test switch, yellow ready indicator, green inverter-on indicator, and red charging indicator
- Dual voltage 120/277 60Hz
- Valve Regulated Lead Acid (VRLA) battery provides long-life and is maintenance free
- Line voltage allows for remote mounting of emergency fixtures at distances up to 1000 feet
- Low Battery Voltage Disconnect
- Line Latch Protection
- Flying leads for operating switched fixtures
- Electronic and fused overload protection
- Meets or exceeds all National Electrical Code and Life Safety Code Emergency Lighting Requirements
- Durable surface mount design with white semi-gloss powder-coat paint finish
- 3/7 Pro-Rata Warranty

IOTA

IIS-375-I

INTERRUPTIBLE 375W INVERTER UNIT EQUIPMENT

RATINGS AND SPECIFICATIONS

RATINGS
Input: 120/277 Volts, 60 Hz 385 Watts (float charge) 500 Watts (bulk charge)
Output: 120/277 Volts, 60 Hz, 375 Watts at .9 leading to .9 lagging PF

SPECIFICATIONS
Transfer Time: less than 50 milliseconds
Voltage Regulation on Emergency: +/- 2% @ 15% to 110% load
Frequency Regulation on Emergency: +/- .5%
Load Power Factor Range: .9 leading to .9 lagging
Operating Temperature: 20° to 30°C (68° to 86°F)

SPECIFICATION SAMPLE

Emergency lighting shall be provided by inverter unit equipment designed to operate designated incandescent, fluorescent and LED fixtures on emergency power at their full nominal lumen rating during the full 90 minutes emergency discharge cycle. System output will be rated at 375 watts for 90 minutes and provide an electronically fused output connection to the load. The system's voltage rating shall be field selectable 120 or 277 VAC input/output.

The inverter unit shall allow for connected emergency fixture(s) to be normally on, normally off, switched or dimmed without affecting lamp operation during a power failure. Upon utility power loss, the inverter unit shall deliver 100% of its full rated output regardless of the local switch or dimmer position, and will provide power to emergency fixtures at distances of up to 1000 feet.

The housing shall be designed for surface mount installation requirements and manufactured using 16-gauge steel with a white hammer semi-gloss scratch-resistant baked-on powder coat paint finish.

The unit's electronics shall include a self-contained inverter section with a fully automatic, thermal-compensating variable-rate battery charger, AC lockout feature, low battery voltage disconnect, DC overload, short circuit and brownout protection as standard. The unit shall utilize a sealed lead calcium battery with a 10-year design life. The inverter system shall be UL 924 Listed and labeled. The unit shall be covered under a 3-year warranty on the electronics and battery and a 7-year pro-rata warranty on the battery. It shall meet or exceed the requirements of UL 924, NFPA 101 Life Safety Code, NFPA 70 National Electrical Code, OSHA and State and Local codes.

The inverter unit shall be IOTA model IIS-375-I.



All IOTA products receive 100% quality inspection before shipment to insure proper and satisfactory operation. When operated under normal conditions, IOTA inverter products will provide years of dependable service. This unit is backed by a 3/7 year warranty. The unit is covered by a complete 3-year warranty against defects in material or workmanship, and a 7-year pro-rata battery warranty.