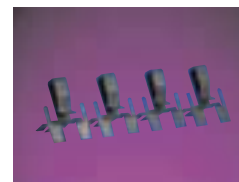
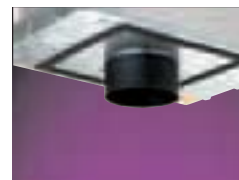


MBCLP: Mounting bar clips to accommodate grid and T-bar ceiling systems. Clips push onto mounting bars and allow platforms to be installed in 24" O.C. grids. One package contains 40 clips (enough to mount 10 platforms). Not for use with RPN3MR.



PLE3: Plaster lip extensions allow IRIS Platforms to be installed in ceilings up to 2" thick. They are field installed onto the platform. For ceilings less than 2" thick, PLE's are easily field cut for optimal installation and are suitable for all elements. One-piece spun steel (22 gauge) assures round aperture. Black polyester powder coated surfaces. Ideal for plaster or skim coat ceilings. PLE3 fits P3 and PN3 (not for use with remodel).



FMC3: A field installed Flush Mount Collar* which allows the element flange to sit flush with the finished ceiling. Collar installs onto plaster lip when platform is mounted. After ceiling is installed finish contractor adjusts collar to proper height and applies skim coat up to edge of collar. Collar adjusts for any ceiling thickness between 5/8" to 1". Lensed Wall Wash and Shower elements should not be used with FMC as they will be difficult to relamp. Self Flanged elements may not be used with FMC accessory. FMC3 fits P3 and PN3.



LENSES

LLNR: Linear spread lens
LSF: Soft-focus lens
LSPD: Spread lens
LUV: Ultraviolet reducing lens
L27K: 2700K dichroic filter warms an MR16 tungsten halogen 3000°K light source to a warmer incandescent color temperature without dimming.

LLPINK: Light Pink
LLSTRAW: Light Straw
LDAY: Daylight Filter
LPLAV: Pale Lavender
LSPINK: Surprise Pink

LOUVERS

LHEX: Matte black hex cell louver provides 45° cutoff to lamp.

