

# M100048TAC5M

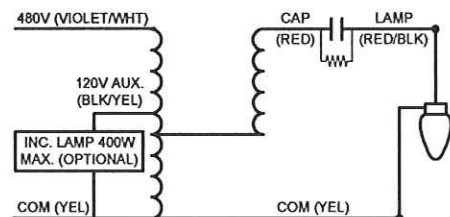
1000W M47

Metal Halide

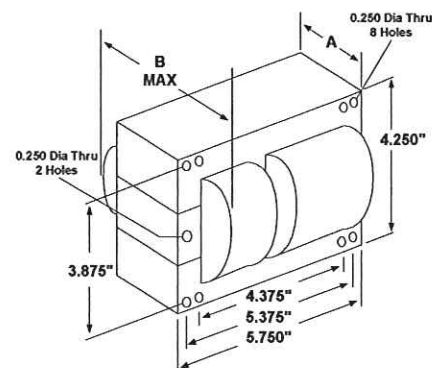
60Hz CWA

## Specification Sheet

<b>Input Volts</b>	480				
<b>Regulation</b>					
Line Volts	±10%				
Lamp Watts	±10%				
<b>Power Factor (min)</b>	90%				
<b>Input Watts</b>	1080 W				
<b>NOM. Open Circuit Voltage</b>	410 V				
<b>Line Current (Amps)</b>					
Operating	2.30				
Open Circuit	1.55				
Starting	1.40				
<b>Recommended Fuse (Amps)</b>	6				
<b>Lamp Dropout Voltage (Line)</b>	320 V				
<b>UL Temperature Ratings</b>					
Insulation Class	H (180°C)				
Temperature Code	D				
<b>MIN. Starting Temperature</b>	-22°F -30°C				
<b>CAPACITOR Specifications</b>					
Microfarads	24 uf				
Volts (min.)	480 V				
<b>60Hz Test Procedures</b>					
High Potential Test 1 Minute	2000 V				
High Potential Test 1 Second	2500 V				
Secondary Open Ckt Voltage (V)	365 - 455				
Secondary Current Shorted (A)	4.80 - 5.85				
Input Operating Current (A)	2.05 - 2.55				
Input Open Circuit Current (A)	0.75 - 2.20				
Input Short Circuit Current (A)	1.00 - 1.60				
<b>Core and Coil Specifications</b>					
Dimension A	2.85 in				
Dimension B	4.75 in				
Weight	22.0 lbs				
Lead Lengths (inches)	12-14				
Coil Material (Pri. / Sec.):	Cu / Al				



Wiring Diagram

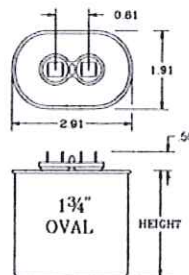


Reference Drawing

Capacitor: 005-2779-MF

Ignitor: None

Temp Rating: 90 °C  
 Height: 3.90 in  
 Width / Diameter: 2.91 in



This Ballast  
 does not  
 require a  
 Ignitor

For alternate capacitor construction consult sales

Document #: 010-11771-01  
 Date: 2/18/2008  
 Status: Production  
 Replaces Catalog #: New Design

Data is based upon tests performed by Universal Lighting Technologies in a controlled environment and is representative of relative performance. Actual performance may vary depending on operating conditions. Specifications are subject to change without notice.