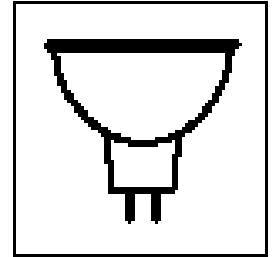


Note: For 100 watts and greater, ample convection or forced air flow is required to prevent socket damage. Lamp Pins should not exceed 225°C to prevent lamp failure. Consult factory for assistance.

2-PIN
(ROUND PINS)
GX-5.3

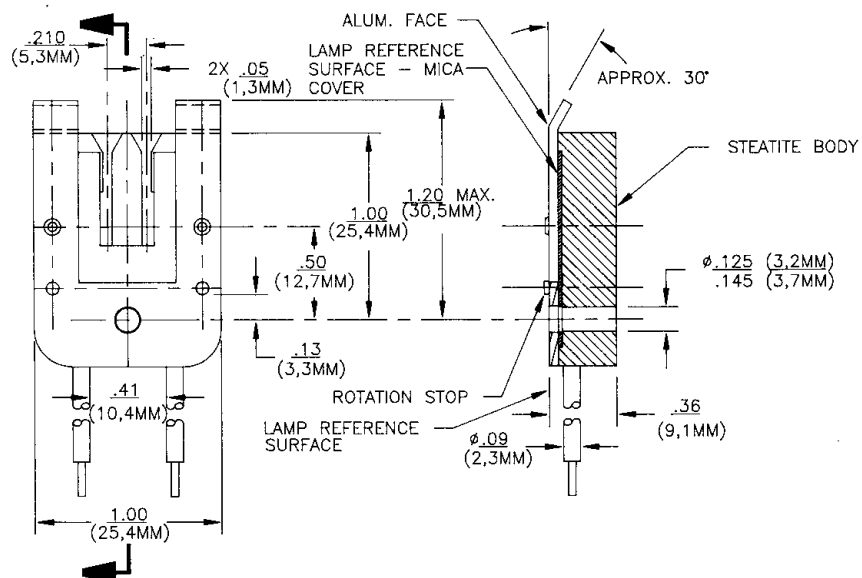


The QEL Low Voltage Lampholder is designed to the ANSI Codes and International Standards. Lampholders are UL and CSA recognized.

Features:

Lead Wire: 200°C SF1 (Standard)
#18 ga. 250°C PTFE (Special)

Construction: Steatite Body
Silver Plated Brass Contacts
(Standard)
Nickel Plated Contacts Available
Stainless Steel Contact Springs
Aluminum Face Plate



QEL