

# T8

## 10.5T8/COR/48-850/IF16/G/DIM/BAA 25/1

Our TLEDs are available in InstantFit (Type A / Type C) or MainsFit (Ballast bypass / Type B) versions. The InstantFit lamps work on a broad variety of ballasts and LED drivers. Only InstantFit has over 15,000 lamp & ballast combinations delivering even light output, energy savings and a long lifetime. Our MainsFit products feature a double-ended design, simplifying installation while a proprietary safety circuit minimizes a shock risk. Lamp sizes range from 2-foot to 8-foot and U-bend with a variety of lumen outputs.

### Product data

General Information	
Cap-Base	G13 [Medium Bi-Pin Fluorescent]
Nominal lifetime	50,000 hour(s)
Switching Cycle	50,000
Lighting Technology	LED
Buy American Compliant Products	Yes
EU RoHS compliant	Yes
Light Technical	
Color Code	850 [CCT of 5000K]
Beam Angle (Nom)	240 degree(s)
Luminous Flux	1,650 lm
Color Designation	Daylight
Correlated Color Temperature (Nom)	5000 K
Luminous Efficacy (rated) (Nom)	157.00 lm/W
Color Consistency	<5
Color rendering index (CRI)	80
LLMF At End Of Nominal Lifetime (Nom)	70 %

Operating and Electrical	
Line Frequency	20K to 120K Hz
Input Frequency	20K to 120K Hz
Power Consumption	10.5 W
Lamp Current (Max)	350 mA
Lamp Current (Min)	90 mA
Starting Time (Nom)	0.5 s
Warm-up time to 60% light	0.5 s
Power Factor (Fraction)	0.9
Voltage (Nom)	120-277, 347 V
UL Type	TLED_Type A; UL listed HF
Temperature	
Ambient temperature range	-4 °F to 113 °F
T-Case Maximum (Nom)	122 °F
Controls and Dimming	
Dimmable	Only with specific dimmers

# T8

## Mechanical and Housing

Bulb Finish	Frosted
Bulb Material	Glass
Product Length	47-1/4 inch
Bulb Shape	T8

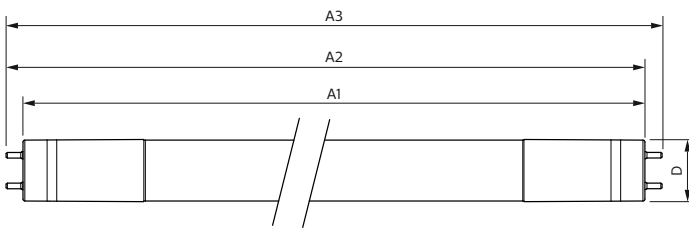
## Approval and Application

Energy Saving Product	Yes
Approval Marks	RoHS compliance UL certificate DLC compliance

## Product Data

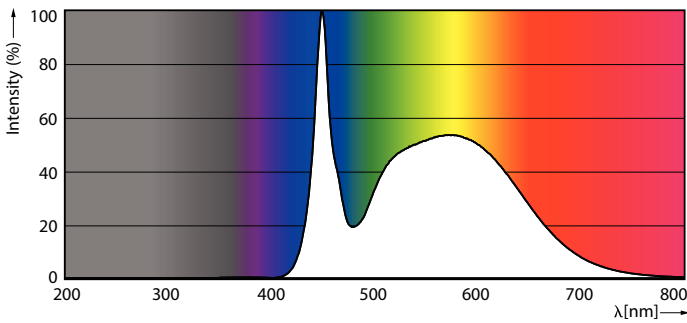
Order product name	10.5T8/COR/48-850/IF16/G/DIM/BAA 25/1
Full product name	10.5T8/COR/48-850/IF16/G/DIM/BAA 25/1
Order code	576793
Material Nr. (12NC)	929003144704
Numerator - Quantity Per Pack	1
EAN/UPC - Product/Case	046677576790
Numerator - Packs per outer box	25
EAN/UPC - Case	50046677576795

## Dimensional drawing

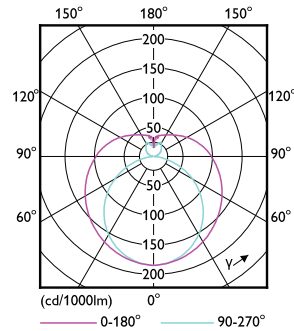


Product	D1	D2	A1	A2	A3
10.5T8/COR/48-850/IF16/G/DIM/BAA 25/1	25.7 mm	25.7 mm	1,198.2 mm	1,205.3 mm	1,212.4 mm

## Photometric data

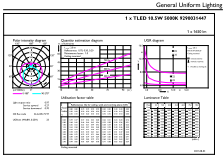


Spectral Power Distribution Colour - 10.5T8/COR/48-850/IF16/G/DIM/BAA 25/1



Light Distribution Diagram - 10.5T8/COR/48-850/IF16/G/DIM/BAA 25/1

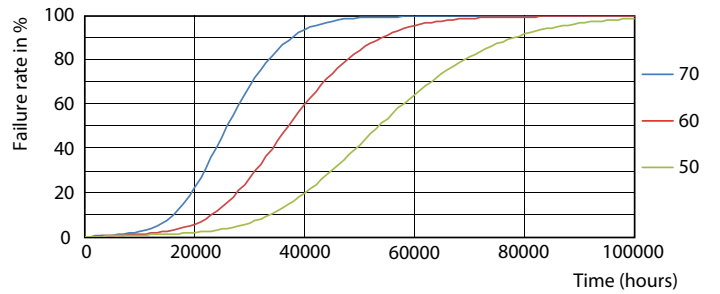
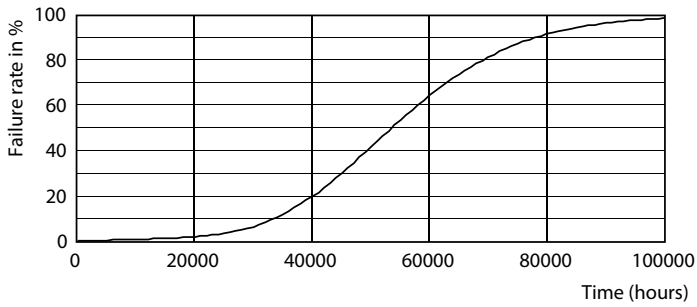
Photometric data



© 2023 Philips Lighting B.V. Page 11 of 11

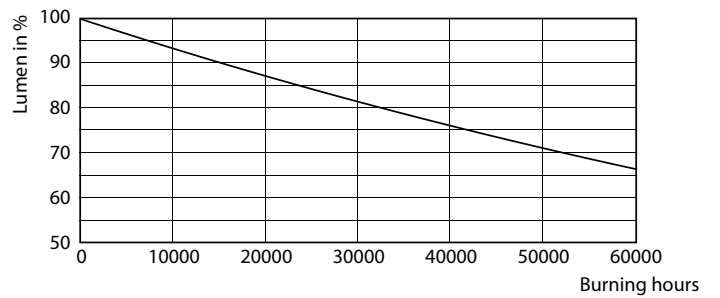
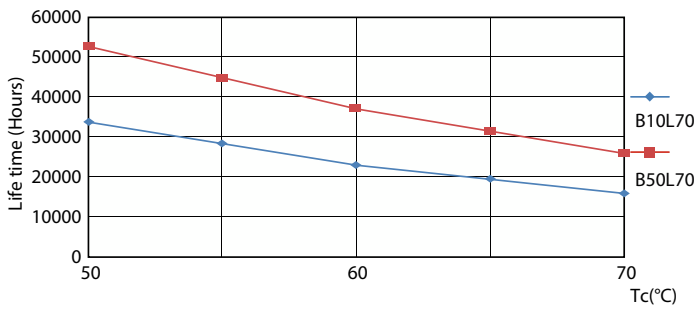
General uniform lighting - 10.5T8/COR/48-850/IF16/G/DIM/BAA 25/1

Lifetime



Life Expectancy Diagram - 10.5T8/COR/48-850/IF16/G/DIM/BAA 25/1

Life Expectancy Diagram - 10.5T8/COR/48-850/IF16/G/DIM/BAA 25/1

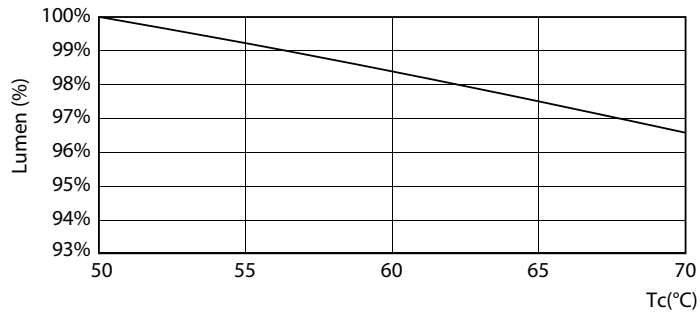


Life Expectancy Diagram - 10.5T8/COR/48-850/IF16/G/DIM/BAA 25/1

Lumen Maintenance Diagram - 10.5T8/COR/48-850/IF16/G/DIM/BAA 25/1

# T8

## Lifetime



Lumen Maintenance Diagram - 10.5T8/COR/48-850/IF16/G/DIM/BAA 25/1

