

# BR30 11W DIM. TITANIUM CRI<sup>SP</sup> LED SERIES 4.0



CRI<sup>SP</sup>



11W REPLACES



65W  
Inc.

80% Energy Savings

**\$188** Savings  
per lamp\*

- ⌚ Revolutionary CLOUD design
- ⌚ 60% lighter due to environmentally friendly construction
- ⌚ Exceptional color rendering CRI 92
- ⌚ Richer reds and natural skin tones (R9 60, R13 95)
- ⌚ Tight LED binning for consistent CCT across all lamps
- ⌚ Suitable for use in totally enclosed fixtures



LM 79

LM 80

TM 21



25,000 H



DIMMABLE



EFFICACY



WARRANTY



CRI (Ra)



ENCLOSED\*\*

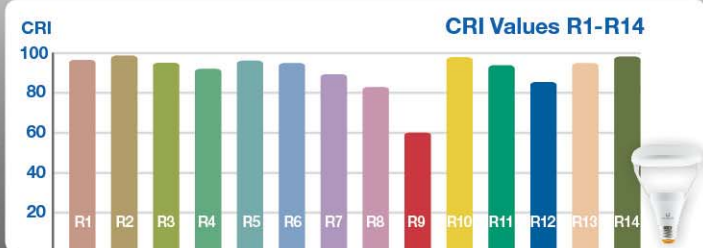
## BR PRODUCT FEATURES

### Revolutionary CLOUD Design

The BR30 CLOUD features an innovative design that provides more efficient light output than previous generations while using 35% less material. This environmentally friendly lamp weighs less than 100g and maintains a traditional incandescent form factor, making it suitable for all applications.



### CRI & CA Quality Specification



THE CRI<sup>SP</sup> SERIES BR30 11W lamp features a typical CRI 92, R9 60 and R13 95, providing crisp and vibrant colors across the whole spectrum. Its exceptional R9-R14 values (R9 & R13) provide redder reds, natural looking skin tones and whiter whites.

This lamp meets the California Quality Specification which requires a CRI of 90+ and demands color temperatures fall within a 4-step Macadam ellipse to ensure minimal color deviation across lamps.

# BR30 11W DIM. TITANIUM CRISP<sup>LED</sup> SERIES 4.0



## APPLICATIONS

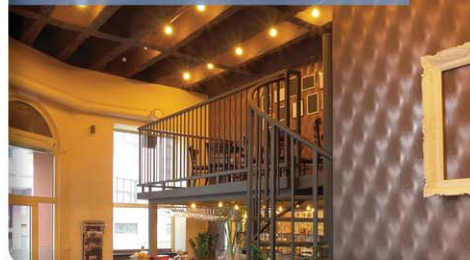
### General Lighting



### Recessed Lighting



### Accent Lighting



Ref.# DS054-BR30-11W-HIGH CRI

## SPECIFICATIONS

Product Model	40644 11BR30G4DIM/927
Type	BR30
Base	E26
Power (W)	11
Voltage - Frequency	120V 60Hz
Color Temp. (ANSI)	Warm White 2700K
CRI (Ra)	92
R9 / R13 (typ.)	60 / 95
Typical lumens (lm)	750
Efficacy (LPW)	68
Beam Angle	110°
Dimmable	Yes***
Power Factor	0.9
Rated Lifetime - L70 (hrs.)	25,000
Dia. x MOL	3.74"x5.20" (95x132mm)
Weight (lb. / g)	0.23lb. / 103g

\* Savings per lamp based on \$0.11 / kw energy cost, 12 hrs / day lamp usage, \$4 incandescent with 1000-hr lifetime, \$30 LED with 25,000-hr lifetime

\*\* Suitable for use in totally enclosed fixtures

\*\*\* List of tested dimmer switches available on website

\*\*\*\* Suitable for damp locations. Not for use where directly exposed to weather or water