



PL-C/T

11PL-C/T/COR/32H-3CCT/MF15/P/20/1

Philips PLED 4-pin & 2-pin lamps are an affordable LED solution to replace compact fluorescent lamps. The product provides a natural lighting effect for use in many lighting applications, and provides instant energy savings, making them an environmentally-friendly solution. Available as replacements for 13W, 26W and 32W compact fluorescent lamps.

Product data

General information	
Base	G24Q [G24q]
EU RoHS compliant	Yes
Nominal Lifetime (Nom)	30000 h
Switching Cycle	50000
Technical Type	LEDTECH-LOV
Tier	CorePro

Light technical	
Color Code	3000/3500/4000
Beam Angle (Nom)	120 °
Initial lumen (Nom)	1425/1450/1500 lm
Color Designation	3000/3500/4000
Correlated Color Temperature (Nom)	3000 3500 4000 K
Luminous Efficacy (rated) (Nom)	136.00 lm/W
Color Consistency	<6
Color Rendering Index (Nom)	83
LLMF At End Of Nominal Lifetime (Nom)	70 %

Operating and electrical	
Input Frequency	50 to 60 Hz
Power (Rated) (Nom)	11 W

Lamp Current (Max)	98 mA
Lamp Current (Min)	39 mA
Starting Time (Nom)	0.5 s
Warm Up Time to 60% Light (Nom)	0.5 s
UL Type	Yes
Power Factor (Nom)	0.9
Voltage (Nom)	120-277 V

Temperature	
T-Ambient (Max)	113 °F
T-Ambient (Min)	-4 °F
T-Ambient (Min)-DUP(do not use)	-4 °F
T-Storage (Max)	149 °F
T-Storage (Min)	-40 °F
T-Case Maximum (Nom)	167 °F

Controls and dimming	
Dimmable	No

Mechanical and housing	
Bulb Finish	Frosted
Bulb Material	Plastic

PL-C/T

Product Length	8 in
Bulb Shape	Tube, single-ended

Approval and application

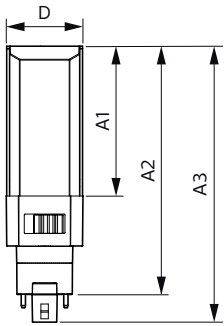
Energy Saving Product	Yes
Approbation Marks	RoHS compliance UL certificate

Product data

Order product name	11PL-C/T/COR/32H-3CCT/MF15/P/20/1
--------------------	-----------------------------------

EAN/UPC - Product	046677577919
Order code	577916
Numerator - Quantity Per Pack	1
Numerator - Packs per outer box	20
Material Nr. (12NC)	929003477804
Net Weight (Piece)	0.209 lb
Model Number	9290034778

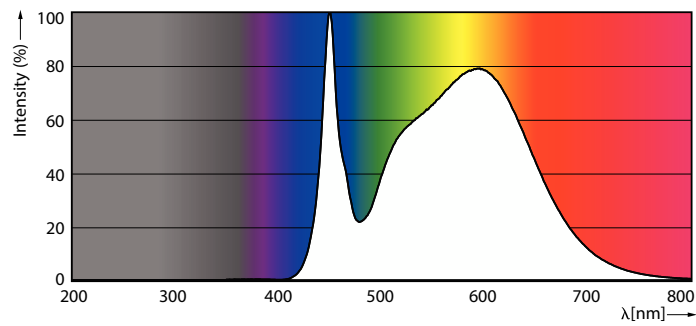
Dimensional drawing



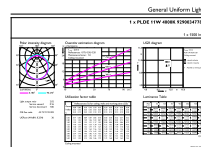
11PL-C/T/COR/32H-3CCT/MF15/P/20/1

Product	D	D2	A1	A2	A3
11PL-C/T/COR/32H-3CCT/MF15/P/	1-11/16 in		3-1/4 in	5-5/16 in	5-15/16 in
20/1					

Photometric data

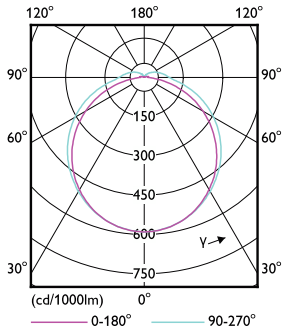


Spectral Power Distribution Colour



General uniform lighting

Photometric data

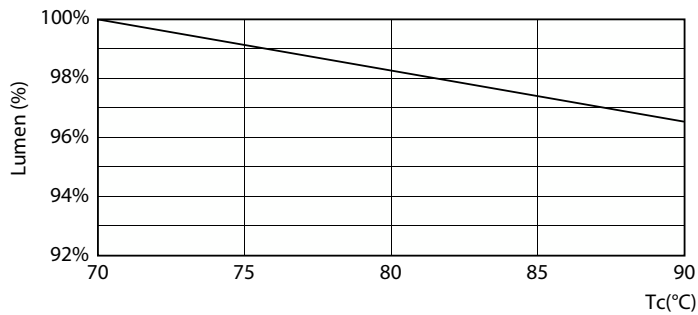


Light Distribution Diagram

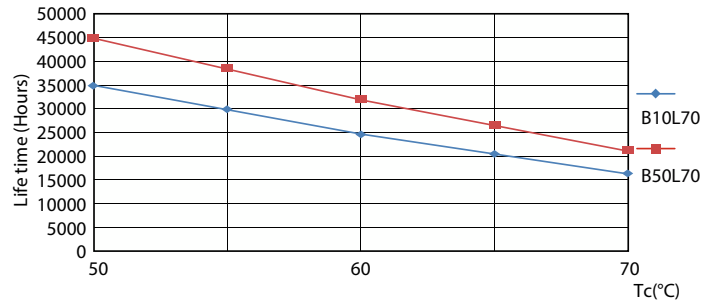
Lifetime



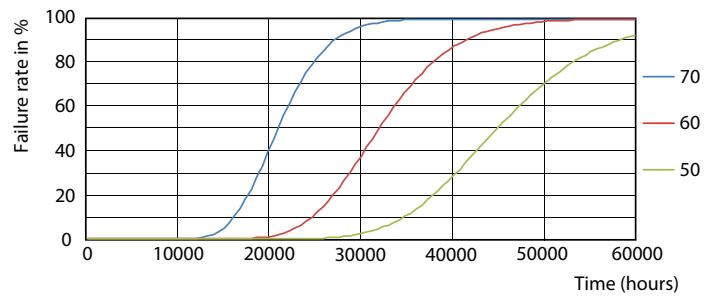
Life Expectancy Diagram



LEDtube_PLCT_11W_30K_LumenVsTc-LMP

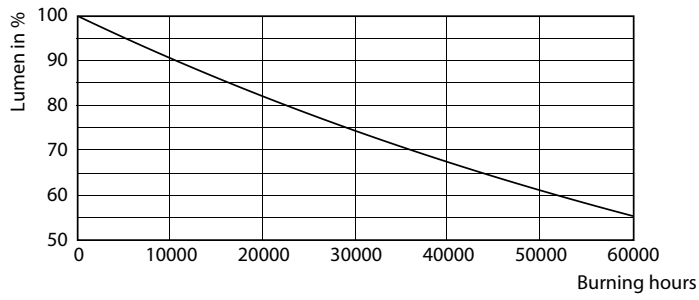


LifetimeVsTc



FailureRate

Lifetime



Lumen Maintenance Diagram

