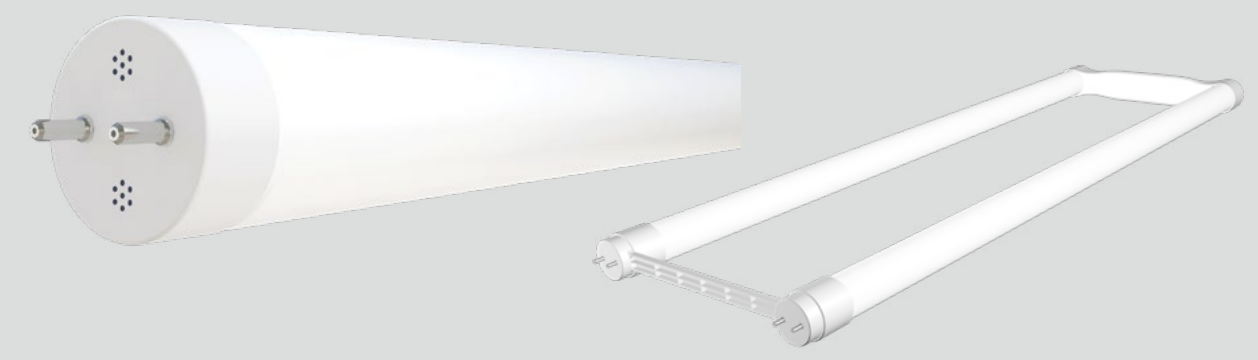
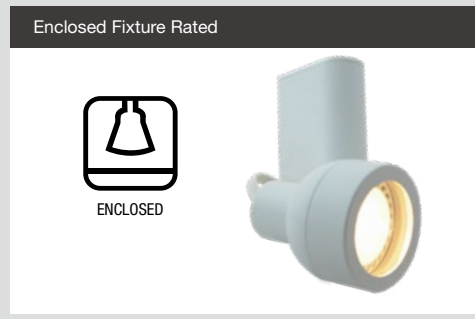


# MR16 VALUE SELECT LINE

# T8 DIR LINE



- Suitable to replace 20W, 35W, 50W, 60W halogen MR16 lamps
- Compatible with most low-voltage electronic transformers
- Smooth dimming with most forward and reverse phase dimming controls
- Suitable for use in totally enclosed fixtures



SPECIFICATIONS													
Product	Model	CCT	Lumens	CRI (typ.)	LPW	CBCP	Dim	Equiv.	Beam Angle	Life (hrs)	Voltage	Encl.	ES / JA8 / T20
36200	6.5MR16DIM/827NF25/35W	2700K	460	82	71	1,610	Yes	35W	25°	25,000	12V	Yes	✓/N.A./N.A.
36201	6.5MR16DIM/830NF25/35W	3000K	460	82	71	1,610	Yes	35W	25°	25,000	12V	Yes	✓/N.A./N.A.
36202	6.5MR16DIM/827FL35/35W	2700K	460	82	71	910	Yes	35W	35°	25,000	12V	Yes	✓/N.A./N.A.
36203	6.5MR16DIM/830FL35/35W	3000K	460	82	71	910	Yes	35W	35°	25,000	12V	Yes	✓/N.A./N.A.
36204	6.5MR16DIM/927NF25	2700K	500	92	77	2,350	Yes	50W	25°	25,000	12V	Yes	✓/✓/✓
36205	6.5MR16DIM/930NF25	3000K	520	92	80	2,400	Yes	50W	25°	25,000	12V	Yes	✓/✓/✓
36206	6.5MR16DIM/940NF25	4000K	540	92	83	2,450	Yes	50W	25°	25,000	12V	Yes	✓/✓/✓
36207	6.5MR16DIM/927FL35	2700K	500	92	77	1,350	Yes	50W	35°	25,000	12V	Yes	✓/✓/✓
36208	6.5MR16DIM/930FL35	3000K	520	92	80	1,400	Yes	50W	35°	25,000	12V	Yes	✓/✓/✓
36209	6.5MR16DIM/940FL35	4000K	540	92	83	1,450	Yes	50W	35°	25,000	12V	Yes	✓/✓/✓
36210	6GU10DIM/827FL40	2700K	550	82	92	700	Yes	50W	40°	25,000	120V	Yes	✓/N.A./N.A.
36211	6GU10DIM/830FL40	3000K	570	82	95	750	Yes	50W	40°	25,000	120V	Yes	✓/N.A./N.A.
36212	6PAR16DIM/827FL35/RC	2700K	550	82	92	1,000	Yes	60W	35°	25,000	120V	Yes	✓/N.A./N.A.
36213	6PAR16DIM/830FL35/RC	3000K	570	82	95	1,050	Yes	60W	35°	25,000	120V	Yes	✓/N.A./N.A.
57984	6MR16DIM/827FL35/R	2700K	480	82	80	1,350	Yes	50W	35°	25,000	12V	Yes	✓/N.A./N.A.
57985	6MR16DIM/830FL35/R	3000K	500	82	83	1,400	Yes	50W	35°	25,000	12V	Yes	✓/N.A./N.A.
57986	6MR16DIM/840FL35/R	4000K	520	82	86	1,450	Yes	50W	35°	25,000	12V	Yes	✓/N.A./N.A.
57991	6PAR16DIM/830FL35/R	3000K	500	82	83	1,050	Yes	60W	35°	25,000	120V	Yes	✓/N.A./N.A.

- Plug & Play installation
- Instant Start & Programmed Start ballast compatible
- Compatible with select 0-10V dimmable ballasts and controls
- Meets NSF requirements (use of a shatter guard required)

SPECIFICATIONS													
Product	Model	CCT	Lumens	CRI (typ.)	LPW	Dim	Equiv.	Beam Angle	Life (hrs)	Voltage	Encl.	DLC	
36561	8T8/2F/830/DIR/RD	3000K	1,250	82	156	Yes	17W	220°	60,000	120-277V	Yes	✓	
36562	8T8/2F/835/DIR/RD	3500K	1,250	82	156	Yes	17W	220°	60,000	120-277V	Yes	✓	
36563	8T8/2F/840/DIR/RD	4000K	1,250	82	156	Yes	17W	220°	60,000	120-277V	Yes	✓	
36564	8T8/2F/850/DIR/RD	5000K	1,250	82	156	Yes	17W	220°	60,000	120-277V	Yes	✓	
36565	10T8/3F/830/DIR	3000K	1,450	82	145	Yes	25W	220°	60,000	120-277V	Yes	✓	
36566	10T8/3F/835/DIR	3500K	1,450	82	145	Yes	25W	220°	60,000	120-277V	Yes	✓	
36567	10T8/3F/840/DIR	4000K	1,450	82	145	Yes	25W	220°	60,000	120-277V	Yes	✓	
36712	10T8/3F/850/DIR	5000K	1,450	82	145	Yes	25W	220°	60,000	120-277V	Yes	✓	
36568	11T8/4F/830/DIR	3000K	1,800	82	164	Yes	32W	220°	60,000	120-277V	Yes	✓	
36569	11T8/4F/835/DIR	3500K	1,800	82	164	Yes	32W	220°	60,000	120-277V	Yes	✓	
36570	11T8/4F/840/DIR	4000K	1,800	82	164	Yes	32W	220°	60,000	120-277V	Yes	✓	
36571	11T8/4F/850/DIR	5000K	1,800	82	164	Yes	32W	220°	60,000	120-277V	Yes	✓	
36579	11T8/4F/830/DIR/C	3000K	1,800	82	164	Yes	32W	220°	60,000	120-277V	Yes	✓	
36580	11T8/4F/835/DIR/C	3500K	1,800	82	164	Yes	32W	220°	60,000	120-277V	Yes	✓	
36581	11T8/4F/840/DIR/C	4000K	1,800	82	164	Yes	32W	220°	60,000	120-277V	Yes	✓	
36582	11T8/4F/850/DIR/C	5000K	1,800	82	164	Yes	32W	220°	60,000	120-277V	Yes	✓	
36713	14T8/4F/830/DIR	3000K	2,200	82	157	Yes	32W	220°	60,000	120-277V	Yes	✓	
36572	14T8/4F/835/DIR	3500K	2,200	82	157	Yes	32W	220°	60,000	120-277V	Yes	✓	
36573	14T8/4F/840/DIR	4000K	2,200	82	157	Yes	32W	220°	60,000	120-277V	Yes	✓	
36574	14T8/4F/850/DIR	5000K	2,200	82	157	Yes	32W	220°	60,000	120-277V	Yes	✓	
36575	15T8U6/830/DIR	3000K	2,100	82	140	Yes	32W	220°	60,000	120-277V	Yes	✓	
36576	15T8U6/835/DIR	3500K	2,100	82	140	Yes	32W	220°	60,000	120-277V	Yes	✓	
36577	15T8U6/840/DIR	4000K	2,200	82	147	Yes	32W	220°	60,000	120-277V	Yes	✓	
36578	15T8U6/850/DIR	5000K	2,200	82	147	Yes	32W	220°	60,000	120-277V	Yes	✓	