

T8

12.5T8/COR/48-850/FF18/G 25/1

FlexFit (Hybrid / dual-mode) T8 LED Lamps by Philips. These lamps work as either a plug-and-play (UL Type A) or ballast bypass (UL Type B) lamp. As a Type A lamp, it is compatible with a variety of ballasts. If a ballast is not desired or fails in the field, the lamp can quickly be installed as a double-ended ballast bypass lamp.

Product data

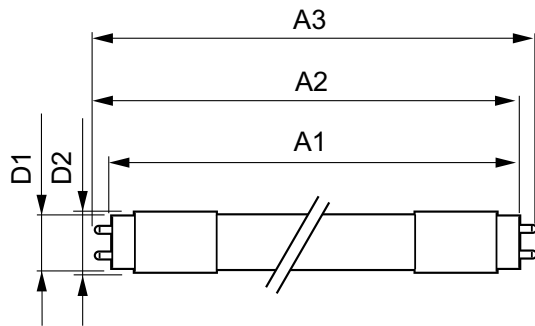
| General Information | | Starting Time (Nom) | |
|---------------------------------------|----------------------------------|---------------------------------|-----------|
| Base | G13 [Medium Bi-Pin Fluorescent] | | 0.5 s |
| EU RoHS compliant | Yes | Warm Up Time to 60% Light (Nom) | 0.5 s |
| Nominal Lifetime (Nom) | 50000 h | Power Factor (Nom) | 0.9 |
| Switching Cycle | 50000X | Voltage (Nom) | 120-277 V |
| Technical Type | 12.5;13-32W | | |
| Light Technical | | Temperature | |
| Color Code | 850 [CCT of 5000K] | T-Ambient (Max) | 45 °C |
| Beam Angle (Nom) | 240 ° | T-Ambient (Min) | -20 °C |
| Initial lumen (Nom) | 1800 lm | T-Storage (Max) | 65 °C |
| Color Designation | Daylight | T-Storage (Min) | -40 °C |
| Correlated Color Temperature (Nom) | 5000 K | T-Case Maximum (Nom) | 60 °C |
| Luminous Efficacy (rated) (Nom) | 144.00 lm/W | Controls and Dimming | |
| Color Consistency | <5 | Dimmable | No |
| Color Rendering Index (Nom) | 82 | Mechanical and Housing | |
| LLMF At End Of Nominal Lifetime (Nom) | 70 % | Bulb Finish | Frosted |
| | | Bulb Material | Glass |
| | | Product Length | 48 in |
| Operating and Electrical | | Approval and Application | |
| Input Frequency | 50 to 60 Hz | Energy Saving Product | Yes |
| Power (Rated) (Nom) | 12.5 13 W | | |
| Lamp Current (Max) | 110 mA | | |
| Lamp Current (Min) | 45 mA | | |

T8

| | |
|--------------------------|---|
| Approbation Marks | RoHS compliance UL certificate DLC compliance |
| Product Data | |
| Order product name | 12.5T8/COR/48-850/FF18/G 25/1 |
| EAN/UPC - Product | 046677600198 |
| Order code | 600197 |

| | |
|--|--------------|
| Numerator - Quantity Per Pack | 1 |
| Numerator - Packs per outer box | 25 |
| Material Nr. (12NC) | 929002317404 |
| Net Weight (Piece) | 0.180 kg |
| Model Number | 9290023174 |

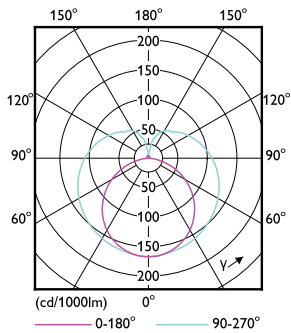
Dimensional drawing



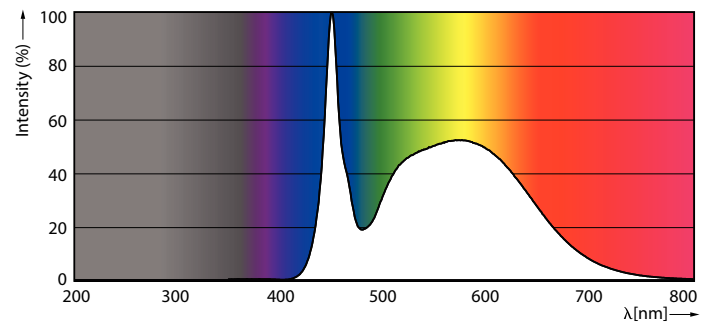
Type A+B corepro 1800lm 14W 5000k DLC

| Product | D1 | D2 | A1 | A2 | A3 |
|-------------------------------|---------|-------|-----------|-----------|-----------|
| 12.5T8/COR/48-850/FF18/G 25/1 | 25.7 mm | 28 mm | 1198.2 mm | 1205.3 mm | 1212.4 mm |

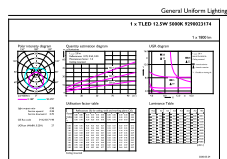
Photometric data



LEDtube COR 12,5W G13

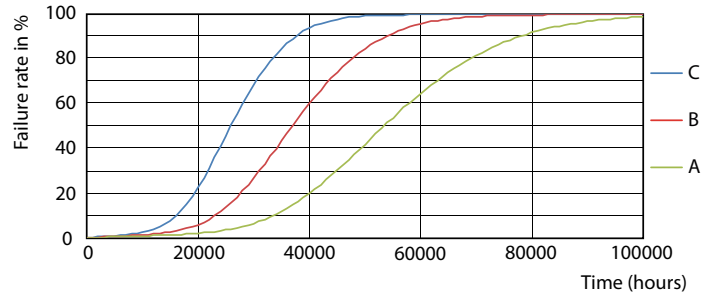
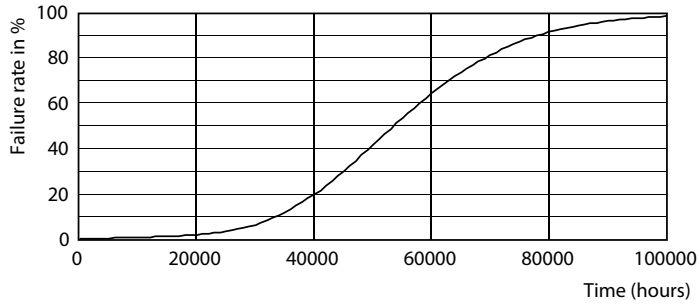


LEDtube COR 12,5W G13 1800lm 850



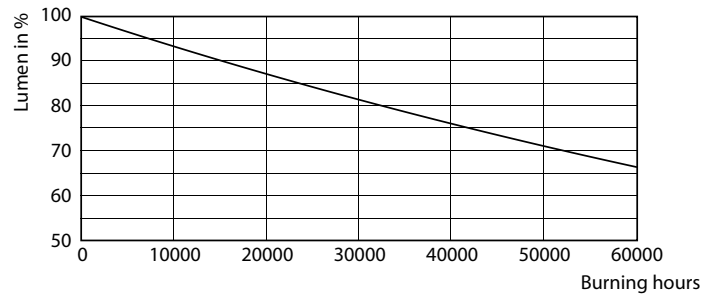
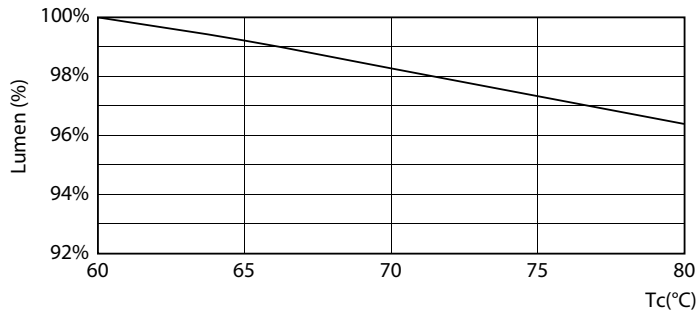
LEDtube COR 12,5W G13 1800lm 850

Lifetime



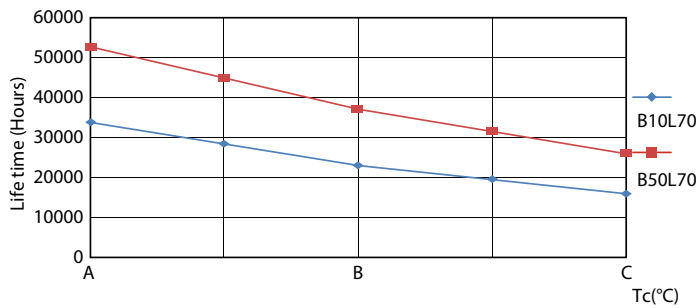
LEDtube 50K-LED

LEDtube 50K FailureRate-LED



LEDtube 12,5W 50K 1 LumenVsTc

LEDtube 50K-LMP



LEDtube 50K LifetimeVsTc-LED

