



MainsFit (UL Type-B) T5

13T5HE/COR/46-5CCT/MF18/G 25/1

The MainsFit (UL Type-B) lamps are designed to be the perfect retrofit solution to move from traditional fluorescent lamps to energy saving LEDs. This ballast bypass lamp has everything needed built into the lamp with proven energy savings, long life, surge suppression and industry leading safety features. All lamps in the MainsFit family are double-ended to help simplify the installation. In addition, all lamps meet the Philips standards for light quality so that end users will be in a comfortable environment regardless of the MainsFit lamp type.

Product data

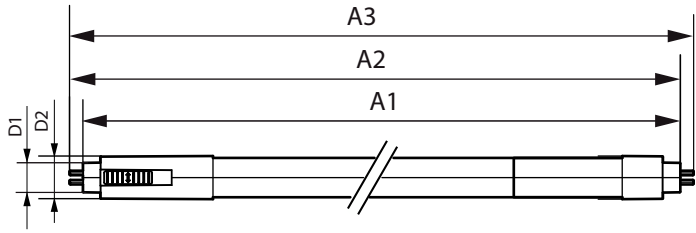
General Information		Operating and Electrical	
Cap-Base	G5	Input Frequency	50 to 60 Hz
Nominal lifetime	50,000 hour(s)	Power Consumption	13 W
Switching Cycle	200,000	Lamp Current (Nom)	115 mA
Lighting Technology	LED	Wattage Equivalent	28 W
Light Technical		Starting Time (Nom)	0.5 s
Color Code	3000K/3500K/4000K/5000K/6500K	Warm-up time to 60% light	0.5 s
Beam Angle (Nom)	160 degree(s)	Power Factor (Fraction)	0.9
Luminous Flux	1,800 lm	Voltage (Nom)	120-277 V
Color Designation	3000K/3500K/4000K/5000K/6500K	UL Type	UL Type B
Correlated Color Temperature (Nom)	3000 3500 4000 5000 6500 K	Temperature	
Luminous Efficacy (rated) (Nom)	138 lm/W	T-Case Maximum (Nom)	158 °F
Color Consistency	<6	Controls and Dimming	
Color rendering index (CRI)	80	Dimmable	Only with specific dimmers
LLMF At End Of Nominal Lifetime (Nom)	70 %		
Photobiological safety according to EN 62471	RG0		

MainsFit (UL Type-B) T5

Mechanical and Housing	
Bulb Finish	Frosted
Bulb Material	Glass
Product Length	47-1/4 inch
Bulb Shape	T5
Net Weight (Piece)	0.375 lb
Approval and Application	
Energy Saving Product	Yes
Approval Marks	RoHS compliance UL certificate KEMA Keur certificate DLC compliance
EU RoHS compliant	Yes
Ambient temperature range	-4 to +113 °F

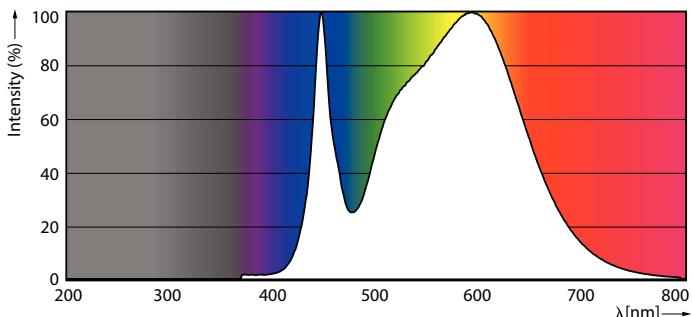
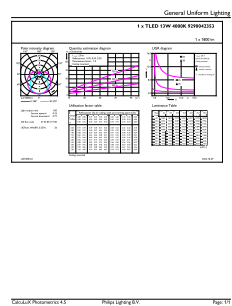
Application Conditions	
can it be used in closed luminaires	Yes
Product Data	
Order product name	13T5HE/COR/46-5CCT/MF18/G 25/1
Full product name	13T5HE/COR/46-5CCT/MF18/G 25/1
Order code	592790
Material Nr. (12NC)	929004235304
Numerator - Quantity Per Pack	1
EAN/UPC - Product/Case	046677592790
Numerator - Packs per outer box	25
EAN/UPC - Case	50046677592795

Dimensional drawing



Product	D1	D2	A1	A2	A3
13T5HE/COR/46-5CCT/MF18/G 25/1	5/8 inch	15/16 inch	45-3/16 inch	45-1/2 inch	45-13/16 inch

Photometric data

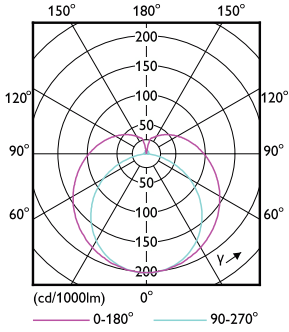


General uniform lighting - 13T5HE/COR/46-5CCT/MF18/G 25/1

Spectral Power Distribution Colour - 13T5HE/COR/46-5CCT/MF18/G 25/1

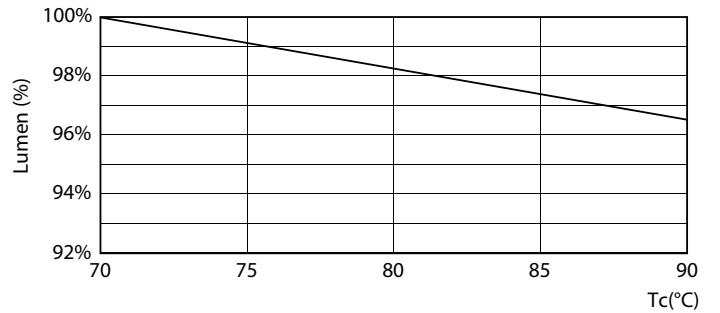
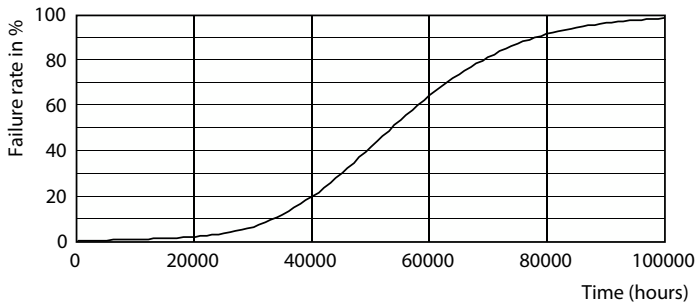
MainsFit (UL Type-B) T5

Photometric data



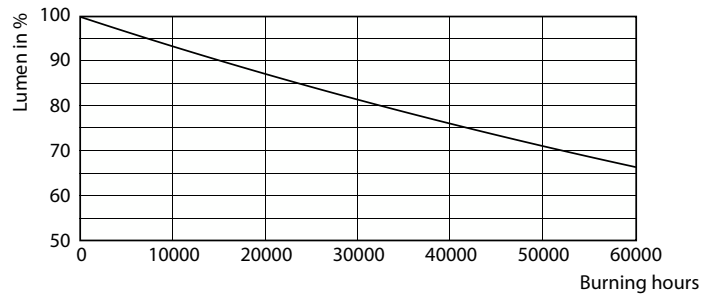
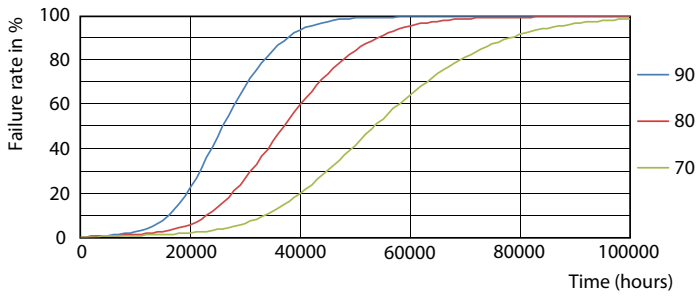
Light Distribution Diagram - 13T5HE/COR/46-5CCT/MF18/G 25/1

Lifetime



Life Expectancy Diagram

Lumen Maintenance Diagram - 13T5HE/COR/46-5CCT/MF18/G 25/1

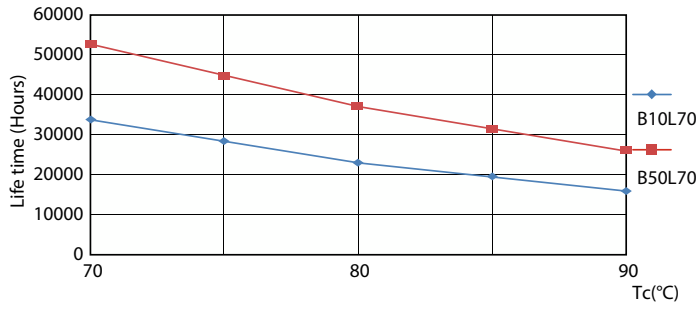


LEDtube 50K 7090 FailureRate-LED

Lumen Maintenance Diagram - 13T5HE/COR/46-5CCT/MF18/G 25/1

MainsFit (UL Type-B) T5

Lifetime



LifetimeVsTc

