

T8

14.5T8/COR/48-835/MF20/G 10/1

Philips MainsFit (UL Type B) CorePro T8 LED tubes deliver high-quality, flicker free performance at an affordable price. The UL Type B LED tubes are designed with easy installation and long-term maintenance simplicity in mind. Upgrade your lighting to Philips and realize 50,000 hour LED lifetime backed by a 5-year, full replacement limited warranty. The DLC 5.1 listed products are compatible with Philips new PTB15D emergency driver meeting UL 924 requirements.

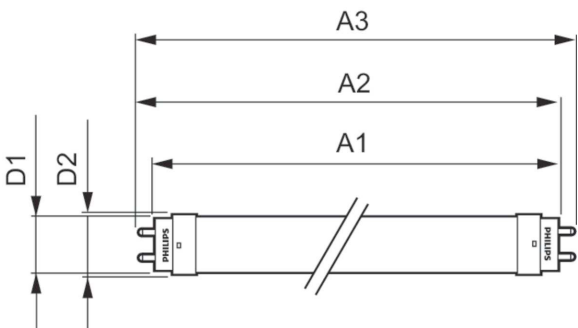
Product data

General information			
Base	G13 [Medium Bi-Pin Fluorescent]	Lamp Current (Max)	124 mA
EU RoHS compliant	Yes	Lamp Current (Min)	58 mA
Nominal Lifetime (Nom)	50000 h	Starting Time (Nom)	0.5 s
Switching Cycle	50000X	Warm Up Time to 60% Light (Nom)	0.5 s
Technical Type	14.5-32W	UL Type	Type B - bypass the ballast
		Power Factor (Nom)	0.9
		Voltage (Nom)	120-277 V
Light technical		Temperature	
Color Code	835 [CCT of 3500K]	T-Ambient (Max)	45 °C
Beam Angle (Nom)	240 °	T-Ambient (Min)	-20 °C
Initial lumen (Nom)	2000 lm	T-Storage (Max)	65 °C
Color Designation	White (WH)	T-Storage (Min)	-40 °C
Correlated Color Temperature (Nom)	3500 K	T-Case Maximum (Nom)	70 °C
Luminous Efficacy (rated) (Nom)	137.00 lm/W		
Color Consistency	<6	Controls and dimming	
Color Rendering Index (Nom)	80	Dimmable	Limited
LLMF At End Of Nominal Lifetime (Nom)	70 %		
Operating and electrical		Mechanical and housing	
Input Frequency	50 to 60 Hz	Bulb Finish	Frosted
Power (Rated) (Nom)	14.5 W	Bulb Material	Glass

Product Length	48 in
Bulb Shape	Tube, double-ended
Approval and application	
Energy Saving Product	Yes
Approbation Marks	RoHS compliance UL certificate DLC compliance
Energy Consumption kWh/1000 h	- kWh
Product data	
Order product name	14.5T8/COR/48-835/MF20/G 10/1

EAN/UPC - Product	046677563530
Order code	563536
Numerator - Quantity Per Pack	1
Numerator - Packs per outer box	10
Material Nr. (12NC)	929002484504
Net Weight (Piece)	0.215 kg
Model Number	9290024845

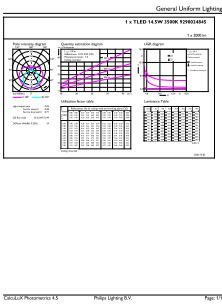
Dimensional drawing



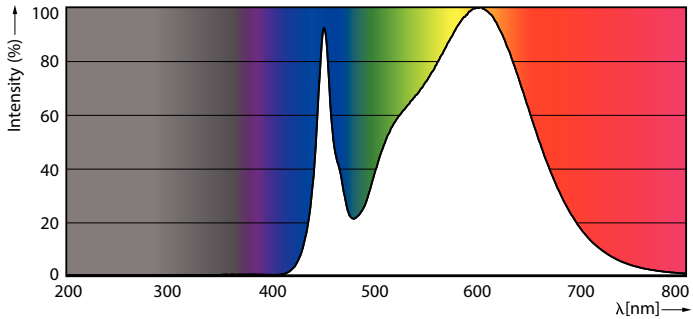
14.5T8/COR/48-835/MF20/G 10/1

Product	D1	D2	A1	A2	A3
14.5T8/COR/48-835/MF20/G 10/1	25.7 mm	28 mm	1198.2 mm	1205.3 mm	1212.4 mm

Photometric data

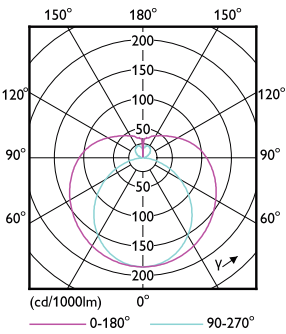


LEDtube COR 14,5W G13 2000lm 835



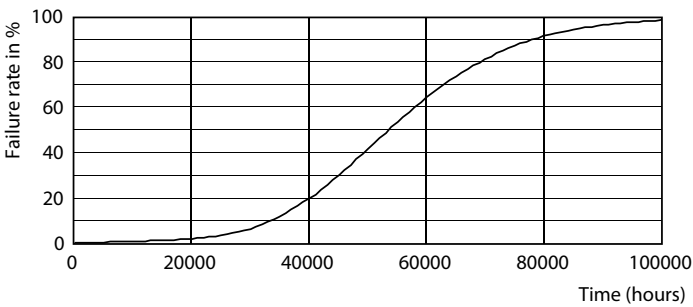
LEDtube COR 9,9W G13 1550lm 835

Photometric data

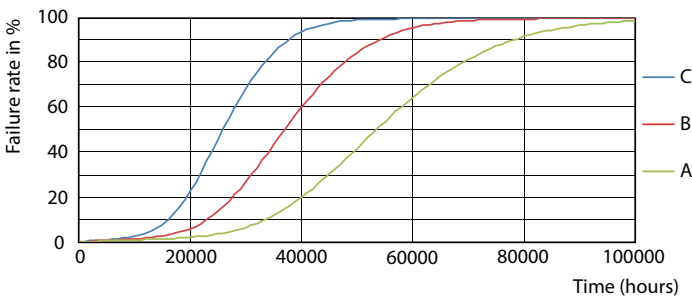


LEDtube COR 9,9W G13 1550lm

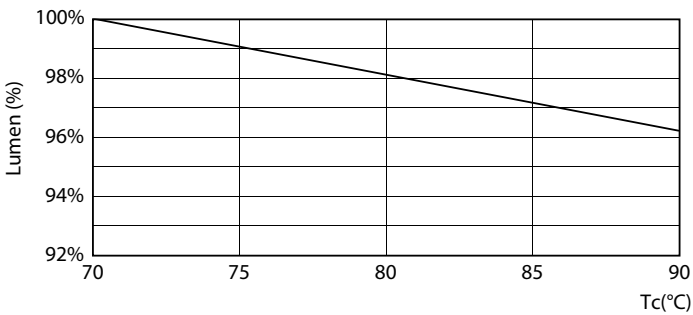
Lifetime



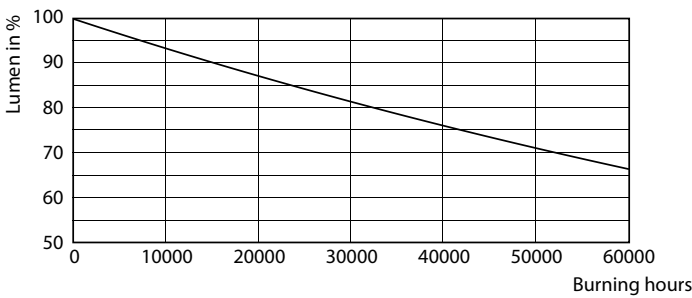
LEDtube 50K-LED



LEDtube 50K FailureRate-LED

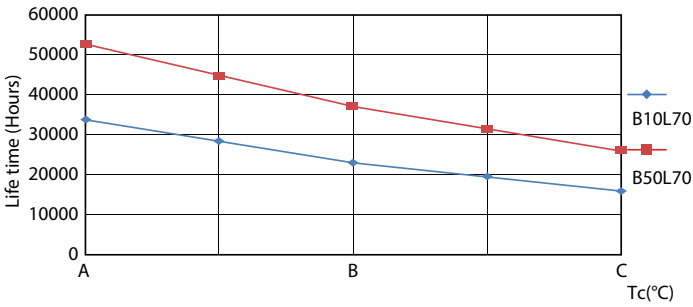


LEDtube COR 9,9W 50K LumenVsTc



LEDtube 50K-LMP

Lifetime



LEDtube 50K LifetimeVsTc-LED

