

CorePro MainsFit (UL Type-B) T8

14.5T8/COR/48-835/MF20/G/DIM 25/1

The CorePro MainsFit (UL Type B) lamps are designed to be the perfect retrofit solution to move from traditional fluorescent lamps to energy saving LEDs. This ballast bypass lamp has everything needed built into the lamp with proven energy savings, long life (up to 50k hours), surge suppression and industry leading safety features. All lamps in the CorePro MainsFit family are double-ended to help simplify the installation. In addition, all lamps meet the Philips standards for light quality so that end users will be in a comfortable environment regardless of the CorePro MainsFit lamp type.

Product data

General Information	
Cap-Base	G13 [Medium Bi-Pin Fluorescent]
Nominal lifetime	50,000 hour(s)
Switching Cycle	50,000
Lighting Technology	LED
EU RoHS compliant	Yes
Light Technical	
Color Code	835 [CCT of 3500K]
Beam Angle (Nom)	240 degree(s)
Luminous Flux	2,000 lm
Color Designation	White (WH)
Correlated Color Temperature (Nom)	3500 K
Luminous Efficacy (rated) (Nom)	137.00 lm/W
Color Consistency	6SCDM
Color rendering index (CRI)	80

LLMF At End Of Nominal Lifetime (Nom) 70 %	
Operating and Electrical	
Line Frequency	50 to 60 Hz
Input Frequency	50 to 60 Hz
Power Consumption	14.5 W
Lamp Current (Max)	125 mA
Lamp Current (Min)	58 mA
Wattage Equivalent	32 W
Starting Time (Nom)	0.5 s
Warm-up time to 60% light	0.5 s
Power Factor (Fraction)	0.9
Voltage (Nom)	120-277 V
UL Type	UL Type B
Temperature	
Ambient temperature range	-4 °F to 113 °F

CorePro MainsFit (UL Type-B) T8

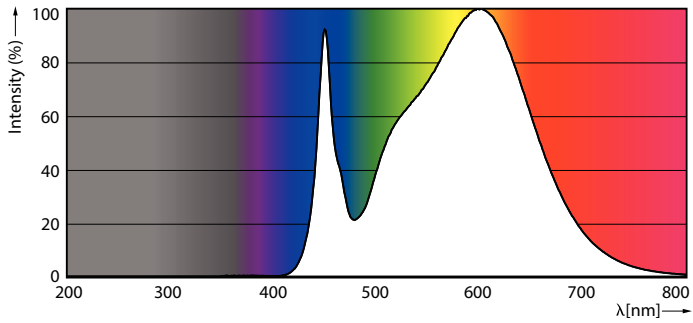
T-Case Maximum (Nom)	158 °F
Controls and Dimming	
Dimmable	Only with specific dimmers
Mechanical and Housing	
Bulb Finish	Frosted
Bulb Material	Glass
Product Length	47-1/4 inch
Bulb Shape	T8
Approval and Application	
Energy Saving Product	Yes
Approval Marks	RoHS compliance UL certificate DLC compliance

Application Conditions	
can it be used in closed luminaires	Yes
Product Data	
Order product name	14.5T8/COR/48-835/MF20/G/DIM 25/1
Full product name	14.5T8/COR/48-835/MF20/G/DIM 25/1
Order code	579417
Material Nr. (12NC)	929003524704
Numerator - Quantity Per Pack	1
EAN/UPC - Product/Case	046677579418
Numerator - Packs per outer box	25
EAN/UPC - Case	50046677579413

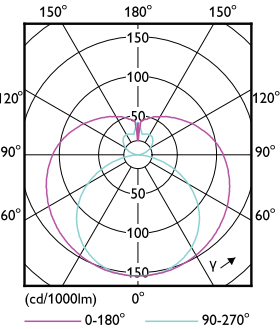
Dimensional drawing

Product	D1	D2	A1	A2	A3
14.5T8/COR/48-835/ MF20/G/DIM 25/1	1-1/16 inch	1-1/8 inch	47-3/16 inch	47-1/2 inch	47-3/4 inch

Photometric data



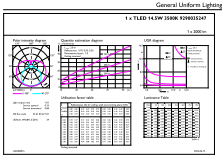
Spectral Power Distribution Colour - 14.5T8/COR/48-835/MF20/G/DIM 25/1



Light Distribution Diagram - 14.5T8/COR/48-835/MF20/G/DIM 25/1

CorePro MainsFit (UL Type-B) T8

Photometric data

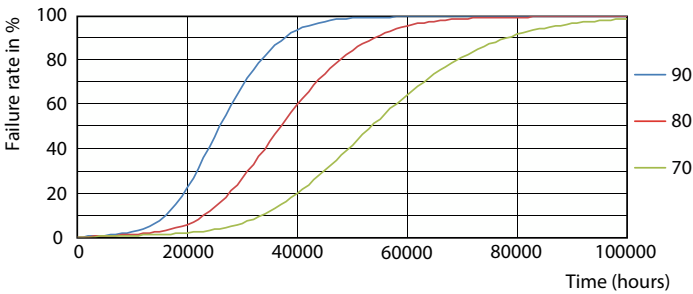


General Uniform Lighting - 14.5T8/COR/48-835/MF20/G/DIM 25/1

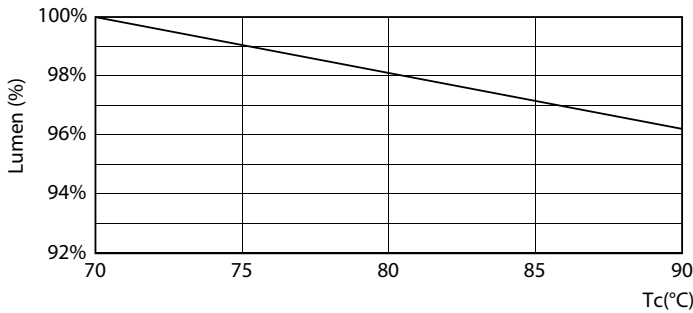
Lifetime



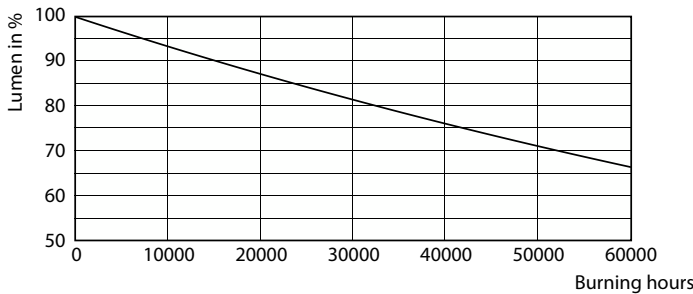
Life Expectancy Diagram - 14.5T8/COR/48-835/MF20/G/DIM 25/1



Life Expectancy Diagram - 14.5T8/COR/48-835/MF20/G/DIM 25/1



Lumen Maintenance Diagram - 14.5T8/COR/48-835/MF20/G/DIM 25/1



Lumen Maintenance Diagram - 14.5T8/COR/48-835/MF20/G/DIM 25/1

CorePro MainsFit (UL Type-B) T8

Lifetime



Life Expectancy Diagram - 14.5T8/COR/48-835/MF20/G/DIM 25/1

