



T8

15.5T8/COR/48-840/MF21/G/BAA 25/1

Philips MainsFit (UL Type B) T8 LED lamps use a double-ended design which significantly simplifies installation, saving time and costs. This product is proudly manufactured in the USA and is BAA (Buy American Act) compliant. This product can replace either T8 or T12 lamps in fixtures containing shunted or non-shunted G13 (medium bi-pin) lamp holders. Available in 4ft and 2ft lengths.

Product data

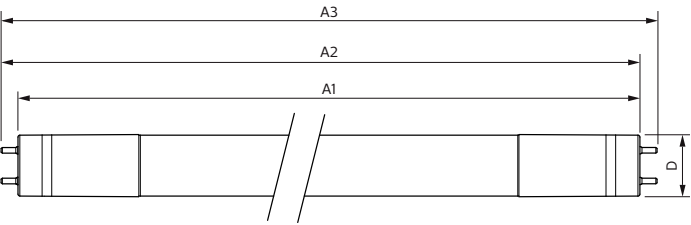
General information		Power (Rated) (Nom)	
Base	G13 [Medium Bi-Pin Fluorescent]	Lamp Current (Max)	132 mA
EU RoHS compliant	Yes	Lamp Current (Min)	65 mA
Nominal Lifetime (Nom)	50000 h	Wattage Equivalent	32-30-28-25 W
Switching Cycle	50000	Starting Time (Nom)	0.9 s
Technical Type	15.5-32W	Warm Up Time to 60% Light (Nom)	0.9 s
Buy American Compliant Products	Yes	UL Type	Type B - bypass the ballast
Tier	CorePro	Power Factor (Nom)	0.9
Light technical		Voltage (Nom)	120-277 V
Color Code	841 [CCT of 4100K (841)]	Temperature	
Beam Angle (Nom)	240 °	T-Ambient (Max)	113 °F
Initial lumen (Nom)	2200 lm	T-Ambient (Min)	-4 °F
Color Designation	Cool White (CW)	T-Storage (Max)	149 °F
Correlated Color Temperature (Nom)	4000 K	T-Storage (Min)	-40 °F
Luminous Efficacy (rated) (Nom)	141.00 lm/W	T-Case Maximum (Nom)	158 °F
Color Consistency	<6	Controls and dimming	
Color Rendering Index (Nom)	80	Dimmable	No
LLMF At End Of Nominal Lifetime (Nom)	70 %	Mechanical and housing	
Operating and electrical		Bulb Finish	Frosted
Input Frequency	50 to 60 Hz		

Bulb Material	Glass
Product Length	47-1/4 in
Bulb Shape	Tube, double-ended
Approval and application	
Energy Saving Product	Yes
Approbation Marks	RoHS compliance UL certificate DLC compliance
Energy Consumption kWh/1000 h	- kWh

Product data	
Order product name	15.5T8/COR/48-840/MF21/G/BAA 25/1

EAN/UPC - Product	046677563738
Order code	563734
Numerator - Quantity Per Pack	1
Numerator - Packs per outer box	25
Material Nr. (12NC)	929002497704
Net Weight (Piece)	0.454 lb
Model Number	9290024977

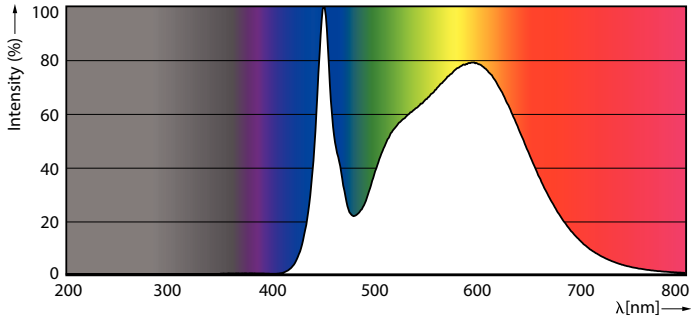
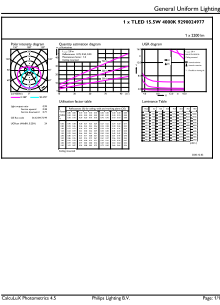
Dimensional drawing



Product	D1	D2	A1	A2	A3
15.5T8/COR/48-840/ MF21/G/BAA 25/1	1-1/16 in	1-1/8 in	47-3/16 in	47-1/2 in	47-3/4 in

15.5T8/COR/48-840/MF21/G/BAA 25/1

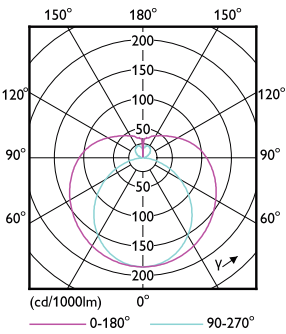
Photometric data



LEDtube COR 15,5W G13 2200lm 840

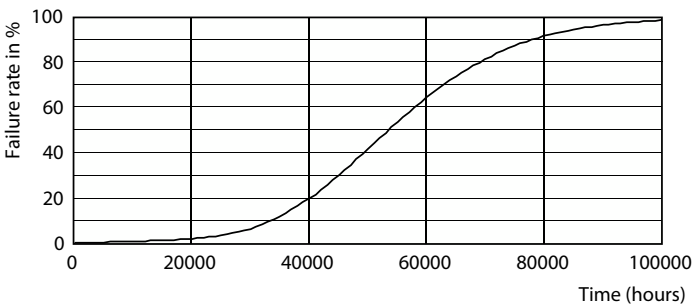
LEDtube COR 11W G13 1700lm 840

Photometric data

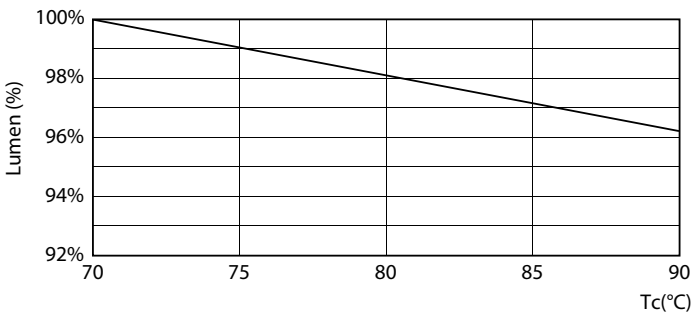


LEDtube COR 11W G13 1650lm

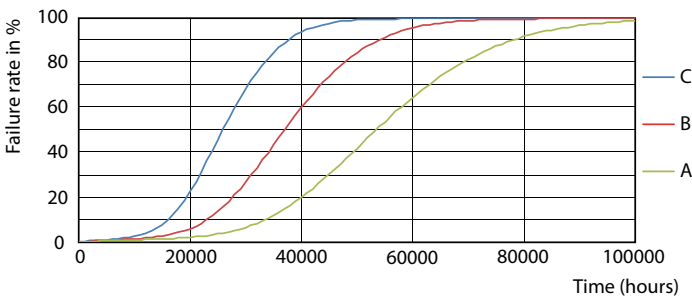
Lifetime



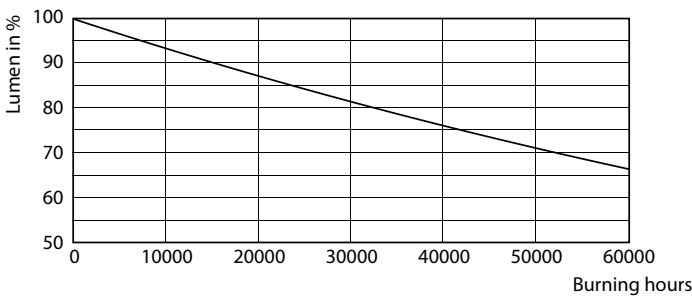
Life Expectancy Diagram



LEDtube COR 11W 50K LumenVsTc

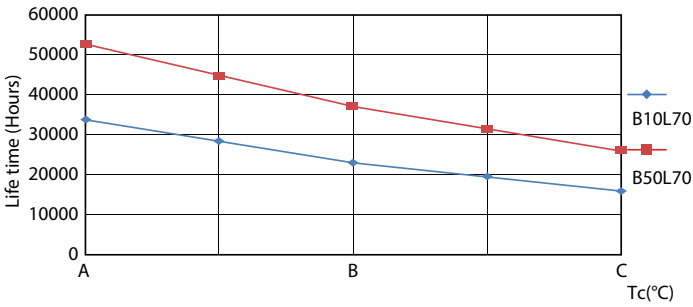


LEDtube 50K FailureRate-LED



Lumen Maintenance Diagram

Lifetime



LEDtube 50K LifetimeVsTc-LED

