



Double Ended Linear

Double Ended Linear BC150T3Q/CL LONG 12/1

High-quality white light with superior lumen performanceHalogen Double Ended lamps provide bright,white light for work lights and security lighting. Rugged construction for busy work sites. Offered in several lengths to meet most application needs.High lumen output provides light where you need it.

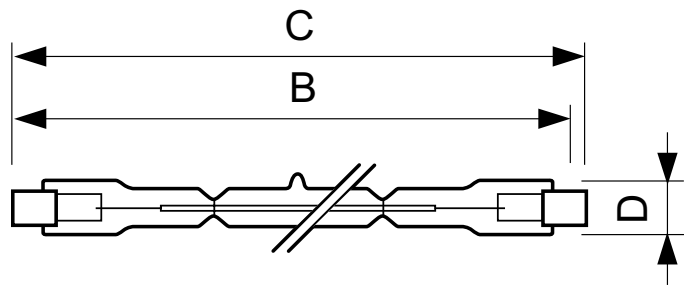
Product data

General Information	
Cap-Base	R7S [R7s]
Operating Position	Horizontal +/- 4 D [Horizontal +/- 4 D]
Nominal Lifetime (Nom)	2000 h
Light Technical	
Initial lumen (Nom)	2000 lm
Correlated Color Temperature (Nom)	2900 K
Luminous Efficacy (rated) (Nom)	13.3 lm/W
Color Rendering Index (Nom)	100
Operating and Electrical	
Power (Rated) (Nom)	150 W
Lamp Current (Nom)	1.25 A
Starting Time (Nom)	0.0 s
Voltage (Nom)	120 V
Controls and Dimming	
Dimmable	Yes

Mechanical and Housing	
Bulb Finish	Clear (CL)
Approval and Application	
Energy Efficiency Label (EEL)	E
Luminaire Design Requirements	
Bulb Temperature (Max)	900 °C
Pinch Temperature (Max)	350 °C
Product Data	
Order product name	Double Ended Linear BC150T3Q/CL LONG 12/1
EAN/UPC - Product	046677415754
Order code	415752
Numerator - Quantity Per Pack	1
Numerator - Packs per outer box	12
Material Nr. (12NC)	924884836301
Net Weight (Piece)	0.008 kg

Double Ended Linear

Dimensional drawing



Product	D (max)	B (max)	B	B (min)	C (max)
Double Ended Linear BC150T3Q/CL	12 mm	115.8 mm	114.2 mm	112.6 mm	117.6 mm
LONG 12/1					

DESmall 150W R7s 120V T3 CL

