



FlexFit (Hybrid UL Type A + B) T8

15T8-6U/COR/24-5CCT/FF22/G 10/1

Philips FlexFit (Hybrid UL Type A + B) lamps are designed with the customer in mind for installation flexibility. The FlexFit lamp can operate as both a plug and play (UL Type-A) and double-ended direct wire (UL Type-B). As with all Philips products, the FlexFit family of lamps are compatible with more ballasts than any manufacturer giving the customer peace of mind during installation. Additionally, the long life (50K hours) delivers reduced maintenance and replacement costs. If the ballast should fail, simply cut the ballast from the system and wire the tube directly to line voltage (120-277V)!

Product data

General Information	
Cap-Base	2G13
Nominal lifetime	50,000 hour(s)
Switching Cycle	50,000
Lighting Technology	LED
Light Technical	
Color Code	3000K/3500K/4000K/5000K/6500K
Beam Angle (Nom)	210 degree(s)
Luminous Flux	1,800 2,000 2,200 lm
Color Designation	3000K/3500K/4000K/5000K/6500K
Correlated Color Temperature (Nom)	3000 3500 4000 5000 6500 K
Luminous Efficacy (rated) (Nom)	146 lm/W
Color Consistency	<6
Color rendering index (CRI)	80
LLMF At End Of Nominal Lifetime (Nom)	70 %

Operating and Electrical	
Input Frequency	50 to 60 Hz
Power Consumption	11.5 13 15 W
Lamp Current (Max)	192 mA
Lamp Current (Min)	148 mA
Wattage Equivalent	32 W
Starting Time (Nom)	0.5 s
Warm-up time to 60% light	0.9 s
Power Factor (Fraction)	0.9
Voltage (Nom)	120-277 V
UL Type	UL Type A+B
Temperature	
T-Case Maximum (Nom)	122 °F

FlexFit (Hybrid UL Type A + B) T8

Controls and Dimming

Dimmable	Limited
----------	---------

Mechanical and Housing

Bulb Finish	Frosted
Bulb Material	Glass
Product Length	23-5/8 inch
Bulb Shape	T8-6U
Net Weight (Piece)	0.551 lb

Approval and Application

Energy Saving Product	Yes
Approval Marks	RoHS compliance UL certificate DLC compliance
EU RoHS compliant	Yes
Ambient temperature range	-4 to +113 °F

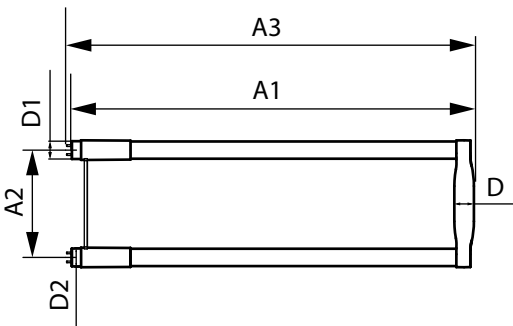
Application Conditions

can it be used in closed luminaires	Yes
-------------------------------------	-----

Product Data

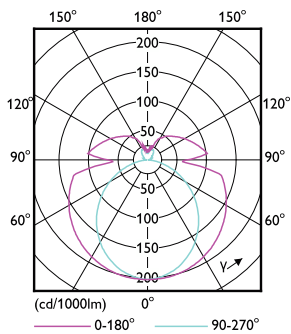
Order product name	15T8-6U/COR/24-5CCT/FF22/G 10/1
Full product name	15T8-6U/COR/24-5CCT/FF22/G 10/1
Order code	606582
Material Nr. (12NC)	929004236104
Numerator - Quantity Per Pack	1
EAN/UPC - Product/Case	046677606589
Numerator - Packs per outer box	10
EAN/UPC - Case	50046677606584

Dimensional drawing

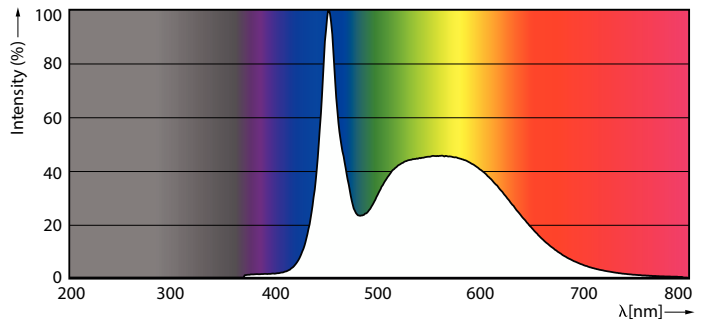


Product	D	D1	D2	A1	A2	A3
15T8-6U/COR/ 24-5CCT/FF22/G 10/1	1-1/8 inch	1-1/16 inch	1-1/8 inch	22-1/2 inch	6 inch	22-3/4 inch

Photometric data



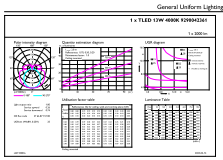
Light Distribution Diagram - 15T8-6U/COR/24-5CCT/FF22/G 10/1



Spectral Power Distribution Colour - 15T8-6U/COR/24-5CCT/FF22/G 10/1

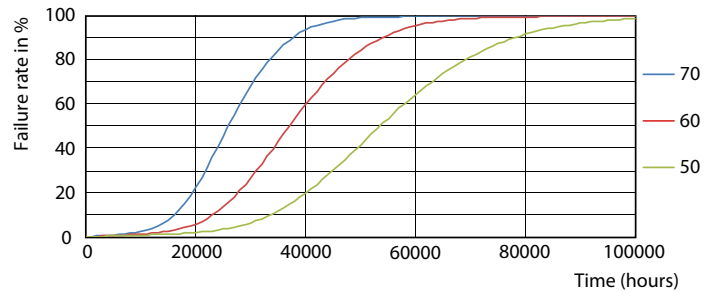
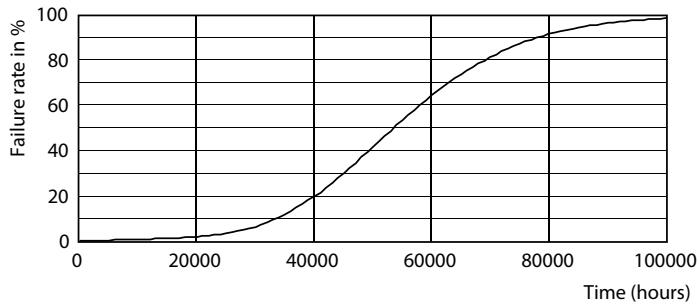
FlexFit (Hybrid UL Type A + B) T8

Photometric data

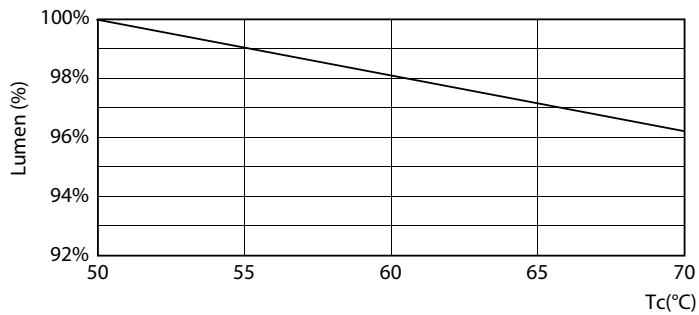


General uniform lighting - 15T8-6U/COR/24-5CCT/FF22/G 10/1

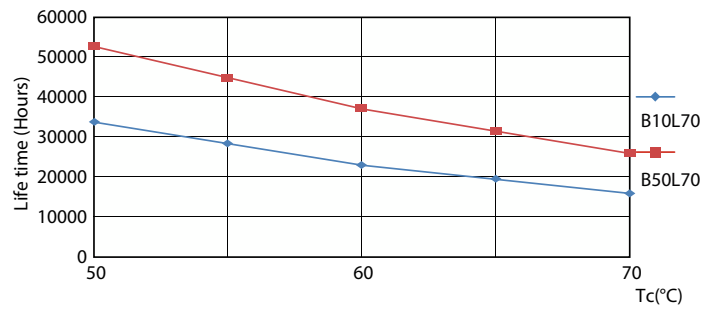
Lifetime



Life Expectancy Diagram



FailureRate

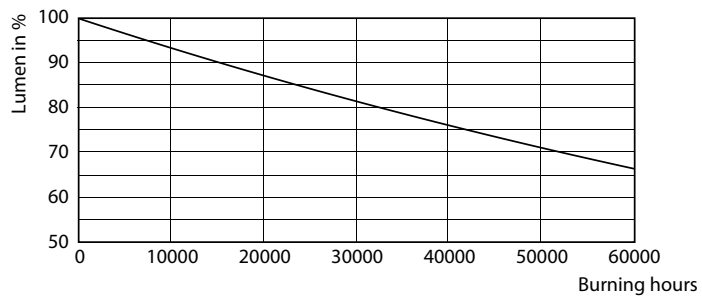


Lumen Maintenance Diagram - 15T8-6U/COR/24-5CCT/FF22/G 10/1

LifetimeVsTc

FlexFit (Hybrid UL Type A + B) T8

Lifetime



Lumen Maintenance Diagram - 15T8-6U/COR/24-5CCT/FF22/G 10/1

