



MasterClass MainsFit (UL Type-B) T8

16.5T8/MAS/48-850/MF25/P/DIM 25/1

The MasterClass MainsFit (UL Type B) T8 lamps are designed to be the perfect retrofit solution to move from traditional fluorescent lamps to energy saving LEDs. This ballast bypass lamp has everything needed built into the lamp with proven energy savings, long life (70k hours), surge suppression and industry leading safety features. All lamps in the MasterClass MainsFit family are double-ended to help simplify the installation. In addition, all lamps meet the Philips standards for light quality so that end users will be in a comfortable environment regardless of the MasterClass MainsFit lamp type.

Product data

General Information	
Cap-Base	G13 [Medium Bi-Pin Fluorescent]
Nominal lifetime	70,000 hour(s)
Switching Cycle	50,000
Lighting Technology	LED
EU RoHS compliant	Yes
Light Technical	
Color Code	850 [CCT of 5000K]
Beam Angle (Nom)	180 degree(s)
Luminous Flux	2,500 lumen
Color Designation	Daylight
Correlated Color Temperature (Nom)	5000 K
Luminous Efficacy (rated) (Nom)	151.00 lm/W
Color Consistency	<5
Color rendering index (CRI)	80

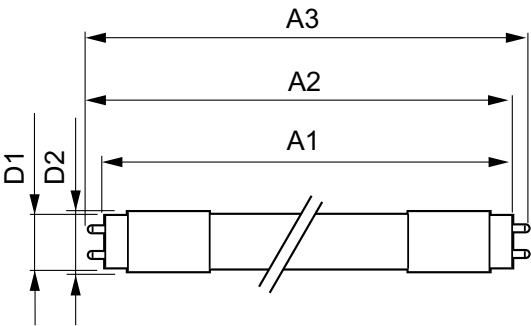
LLMF At End Of Nominal Lifetime (Nom) 70 %	
Operating and Electrical	
Line Frequency	50 to 60 Hz
Input Frequency	50 to 60 Hz
Power Consumption	16.5 W
Starting Time (Nom)	0.5 s
Warm-up time to 60% light	0.5 s
Power Factor (Fraction)	0.9
Voltage (Nom)	120-277 V
Temperature	
Ambient temperature range	-20 °C to 45 °C
T-Case Maximum (Nom)	158 °F

MasterClass MainsFit (UL Type-B) T8

Controls and Dimming	
Dimmable	Only with specific dimmers
Mechanical and Housing	
Bulb Finish	Frosted
Bulb Material	Plastic
Product Length	47-1/4 inch
Bulb Shape	Tube, double-ended
Approval and Application	
Energy Saving Product	Yes
Approval Marks	RoHS compliance UL certificate DLC compliance

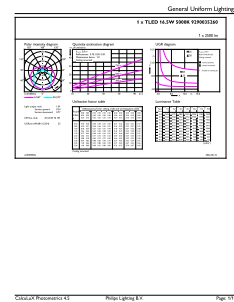
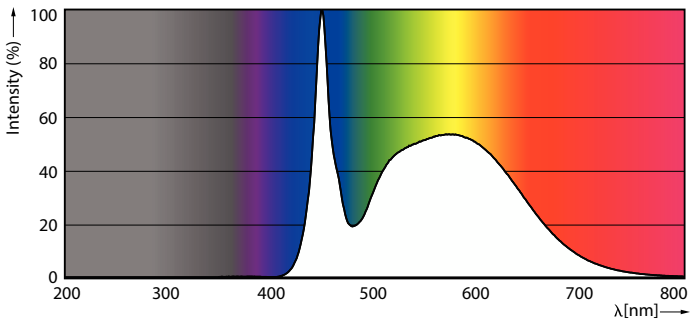
Product Data	
Order product name	16.5T8/MAS/48-850/MF25/P/DIM 25/1
Order code	579532
Numerator - Quantity Per Pack	1
Numerator - Packs per outer box	25
Material Nr. (12NC)	929003526004
Full product name	16.5T8/MAS/48-850/MF25/P/DIM 25/1
EAN/UPC - Case	50046677579536
EAN/UPC - Product/Case	046677579531

Dimensional drawing



Product	D1	D2	A1	A2	A3
16.5T8/MAS/48-850/ MF25/P/DIM 25/1	1-1/16 inch	1-1/8 inch	47-3/16 inch	47-1/2 inch	47-3/4 inch

Photometric data

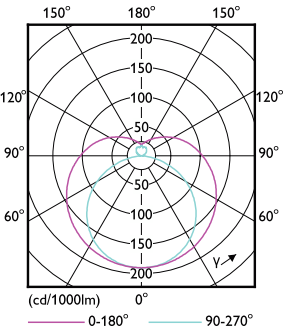


Spectral Power Distribution Colour

General uniform lighting - 16.5T8/MAS/48-850/MF25/P/DIM 25/1

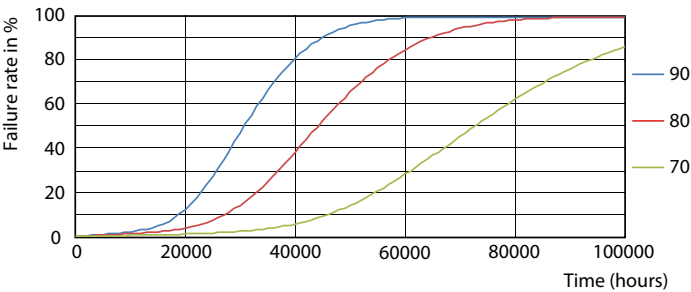
MasterClass MainsFit (UL Type-B) T8

Photometric data

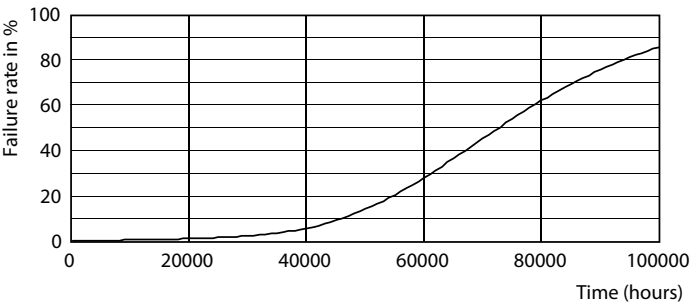


Light Distribution Diagram - 16.5T8/MAS/48-850/MF25/P/DIM 25/1

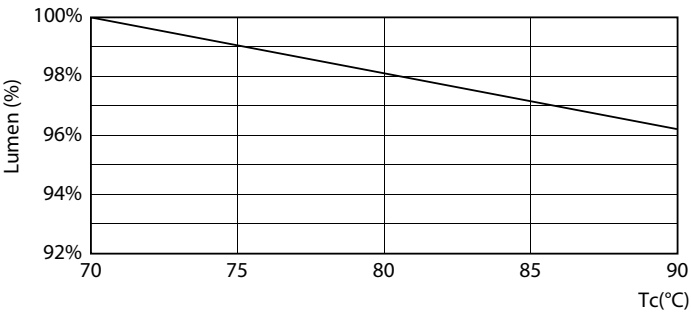
Lifetime



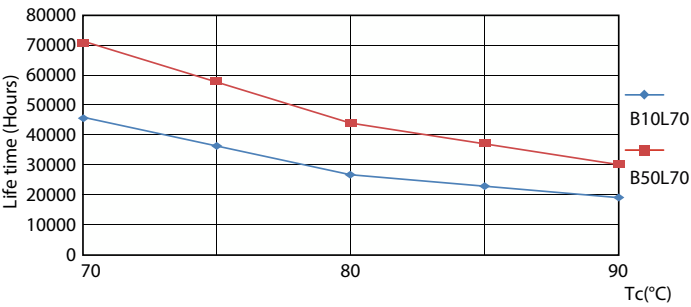
Life Expectancy Diagram - 16.5T8/MAS/48-850/MF25/P/DIM 25/1



Life Expectancy Diagram - 16.5T8/MAS/48-850/MF25/P/DIM 25/1



Lumen Maintenance Diagram - 16.5T8/MAS/48-850/MF25/P/DIM 25/1



Life Expectancy Diagram - 16.5T8/MAS/48-850/MF25/P/DIM 25/1

MasterClass MainsFit (UL Type-B) T8

Lifetime



Lumen Maintenance Diagram - 16.5T8/MAS/48-850/MF25/P/DIM 25/1

