



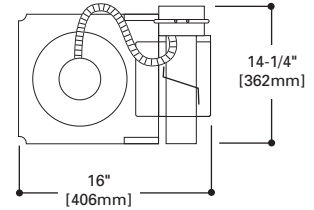
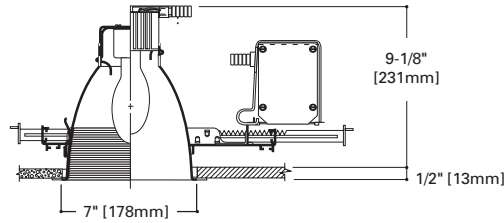
M700

7" Aperture
Magnetic Ballast
Metal Halide
HPS
HID Housing
Magnetic Ballast

RECESSED DOWNLIGHTING

- Non-IC Housing
- Metal Halide or HPS Ballasts
- May be used in insulated ceilings but insulation MUST be kept 3" from all sides of fixture

DIMENSIONS



DESCRIPTION

A low brightness 7" aperture recessed downlight for use with Metal Halide or HPS lamps. Alzak® specular reflector or black Coilex Baffle minimizes aperture brightness and provides a 45° visual cutoff to lamp (depending upon socket position). Socket cap adjusts for high or low settings, providing normal or wide distribution (cutoff varies with socket position). Suitable for downlighting where a smooth pattern of light is desired—public areas, lobbies, stores and reception areas. Visually, this luminaire provides a uniform beam with a smooth edge.

Reflector
Specular clear or gold Alzak® reflector, .040 spun aluminum. Baffle is seamless black Baffle.

Trim Ring
High impact polymer with satin white finish.

Socket Cap
Heat dissipating die-cast .080 aluminum. Adjusts and locks

without tools for normal and wide beam distributions.

Plaster Frame
Precision die stamped steel frame. Bar Hanger brackets on four sides. Trim supports adjust to accommodate ceiling materials up to 1 1/2" thick.

Bar Hangers
Two piece bar hangers accommodate joist spacing up to 24". Bar hangers can be repositioned 90° to simplify clearance for wiring.

Conduit Fittings
Die-cast screw tight connectors.

Junction Box
U.L. listed for four in, four out #12 at 75°C pull through branch wiring. Positioned on ballast mounting bracket to allow straight conduit runs. Knockouts for eight 1/2" and one 3/4" conduits. Access to junction box by removing reflector.

Socket
Medium base porcelain socket

with nickel plated screw shell (shipped with ballast).

Ballast
Quick mount plug-in magnetic ballast with dual tap. Ballast secures to mounting frame with spring lock. Order separately.

HPS
611S =35W HPS (120V)
620S =50W HPS (120/277V)
630S =70W HPS (120/277V)
638S =70W HPS (120/347V)
640S =100W HPS (120/277V)
648S =100W HPS (120/347V)

Metal Halide
720S =50W MH (120V/277)
730S =70W MH (120V/277)
738S =70W MH (120V/347)
740S =100W MH (120V/277)
748S =100W MH (120V/347)

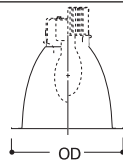
Labels
UL/cUL listed for damp location
UL/cUL listed for Feed Through

1700 Specular Reflector

- Full open reflector
- Lamps:

M700T-611S	35W HPS (120V only)
M700T-620S	50W HPS
M700T-630S	70W HPS
M700T-638S	70W HPS
M700T-640S	100W HPS
M700T-648S	100W HPS

OD:
8-1/4"
[210mm]



1700G
White Trim with Gold Specular Reflector

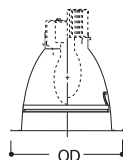
1700P
White Trim with Clear Specular Reflector

1705 Specular Reflector with Tempered Glass Shield

- Full reflector with tempered glass shield for use with metal halide lamps
- Lamps:

M700T-720S	50W MH
M700T-730S/738S	70W MH
M700T-740S/748S	100W MH

OD:
8-1/4"
[210mm]



1705G
White Trim with Gold Specular Reflector and Tempered Glass Shield

1705P
White Trim with Clear Specular Reflector and Tempered Glass Shield