

2-0245-A-BI-EM 2-0246-A-BI-EM

Round Puff Ceiling Fixture



Features

Housing

Die-formed Cold-rolled Steel

Optical

Shade: High Transmission Acrylic Create Excellent Light Distribution and Uniformity

LED: High Efficiency, High CRI, Binned and Mixed to Reach Uniform Light

Electrical

High Power Factor, Low THD

Built-in Emergency Lighting

Bi-Level Lighting

Lamp

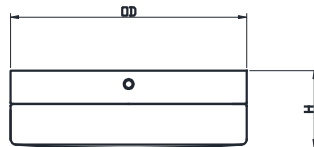
LED Type: Built-in (Color Temperature: 3000K, 3500K, 4000K, 5000K)

Certifications

ETL/cETL Listed

Warranty

5 Years Warranty on Driver and LED Module



Emergency Backup Models

Model	Input Voltage	Input Voltage	LED CT	CRI	Lumen (Typ)	Dimension (OD X H)	Energy Star
2-0245D-A-xxxxK-EM	120V	17W	3000K	> 80	1600	11.0" x 4.7"	Yes
2-0246D-A-xxxxK-EM	120V ~ 277V	24W	3000K	> 80	2560	14.0" x 4.9"	Yes

Bi-Level Lights with Built-in High Frequency Sensor

Model	Input Voltage	Input Voltage	LED CT	CRI	Lumen (Typ)	Dimension (OD X H)	Energy Star
2-0245D-A-xxxxK-BI	120V	17W	3000K	> 80	1600	11.0" x 4.7"	Yes
2-0246D-A-xxxxK-BI	120V ~ 277V	24W	3000K	> 80	2560	14.0" x 4.9"	Yes

Bi-Level Lights with Emergency Backup

Model	Input Voltage	Input Voltage	LED CT	CRI	Lumen (Typ)	Dimension (OD X H)	Energy Star
2-0245D-A-xxxxK-BI-EM	120V	17W	3000K	> 80	1600	11.0" x 4.7"	Yes
2-0246D-A-xxxxK-BI-EM	120V ~ 277V	24W	3000K	> 80	2560	14.0" x 4.9"	Yes