

USHIO

MR-8 REFLECTOR LAMP

MR-8



MR-8 LOW VOLTAGE FOR GENERAL LIGHTING

At only one inch in diameter, USHIO's MR-8 lamp allows for even smaller fixture designs than MR-11 and MR-16 lamps.

Available in 20 watt and 35 watt in narrow and wide beam spreads

APPLICATIONS

- Decorative Lighting
- Display Lighting
- Accent Lighting
- Low-Voltage Lighting
- Landscape Lighting

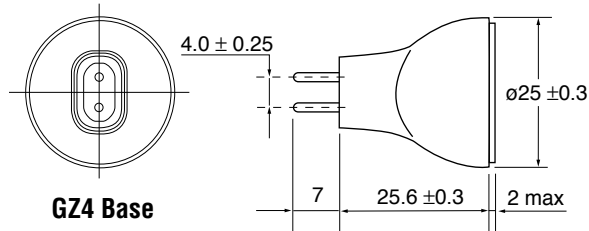
FEATURES AND BENEFITS

- 1 Inch in Diameter
- Standard Bi Pin GZ4 Base
- 3050K Color Temperature
- 2000 Hours Average Life
- Integrated Cover Glass
- Precisely Focused Light Cone
- Dimmable
- Cool Beam Dichroic Reflector



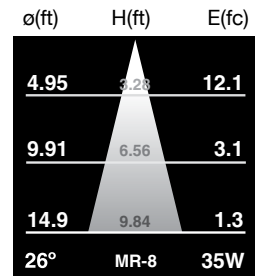
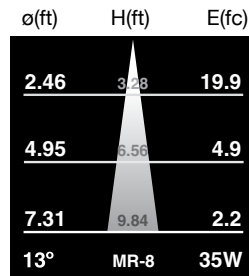
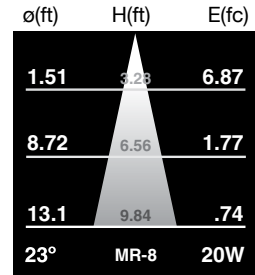
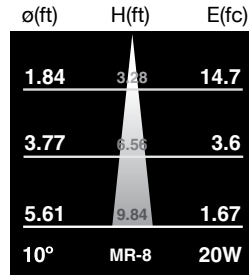
USHIO

CHARACTERISTICS & SPECIFICATIONS



All dimensions are in millimeters

Use with **USHIO C-14B socket:**
Ordering Code: 1000109



Watts (W)	Ushio Ordering Code	Ushio Lamp Description	Voltage (V)	Dimension OAL (mm)	Color Temp (K)	Beam Angle	Beam Spread	Luminous Intensity (cd)	Avg Life (h)
20	1003116	MR-8 12V-20W/NSP10/FG	12	34.6	3050	10°	Narrow Spot	1700	2000
20	1003117	MR-8 12V-20W/NFL23/FG	12	34.6	3050	23°	Narrow Flood	800	2000
35	1003118	MR-8 12V-35W/SP13/FG	12	34.6	3050	13°	Spot	2300	2000
35	1003119	MR-8 12V-35W/NFL26/FG	12	34.6	3050	26°	Narrow Flood	1400	2000

Distributed by:

Form No. S-MR8/R-0609: The specifications on this sheet supercede all previously published specifications and may be subject to change for design and specification improvement without prior notice.

© 2009 USHIO America, Inc. All rights reserved.