

# LED InstantFit Lamps

## 24T5HO/46-840/IF35/P/DIM 10/1

Philips LED T8 InstantFit Lamps are an ideal energy saving choice for existing linear fluorescent fixtures.

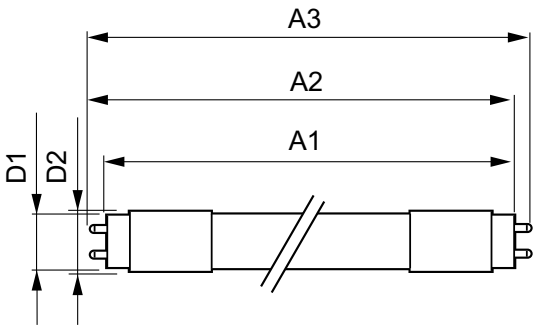
### Product data

General Information		Temperature	
Cap-Base	G5 [ G5]	T-Ambient (Max)	45 °C
Nominal Lifetime (Nom)	50000 h	T-Ambient (Min)	-20 °C
Switching Cycle	50000X	T-Storage (Max)	65 °C
B50L70	50000 h	T-Storage (Min)	-40 °C
Light Technical		Controls and Dimming	
Color Code	840 [ CCT of 4000K]	Dimmable	Yes
Luminous Flux (Nom)	3500 lm	Mechanical and Housing	
Luminous Flux (Rated) (Nom)	3500 lm	Product Length	1200 mm
Correlated Color Temperature (Nom)	4000 K	Approval and Application	
Color Consistency	<5	Energy Saving Product	Yes
Color Rendering Index (Nom)	82	Approval Marks	UL certificate RoHS compliance DLC compliance
LLMF At End Of Nominal Lifetime (Nom)	70 %	Product Data	
Operating and Electrical		Order product name	24T5HO/46-840/IF35/P/DIM 10/1
Input Frequency	40000-80000 Hz	EAN/UPC - Product	046677467142
Power (Rated) (Nom)	24 W	Order code	929001283904
Lamp Current (Max)	600 mA	Numerator - Quantity Per Pack	1
Lamp Current (Min)	400 mA	Numerator - Packs per outer box	10
Starting Time (Nom)	0.5 s	Material Nr. (12NC)	929001283904
Warm Up Time to 60% Light (Nom)	0.5 s	Net Weight (Piece)	0.170 kg
Power Factor (Nom)	0.9		
Voltage (Nom)	39-64 V		

Warnings and Safety

- Philips LED T8 InstantFit lamps will only operate properly on compatible instant-start ballasts. Please refer to the Philips LED T8 InstantFit Installation Guide, which can be obtained through your local Philips Sales Representative, or visit [www.philips.com/tled](http://www.philips.com/tled)

Dimensional drawing



TLED 120V 24-54W 3600lm 4000K G5

Product	D1	D2	A1	A2	A3
24T5HO/46-840/IF35/P/DIM	15.2 mm	17.8 mm	1147.8 mm	1154.9 mm	1162 mm
10/1					

Photometric data

