

STEADY-ON & FLASHING BEACONS



High Output microLED LED Warning Signal

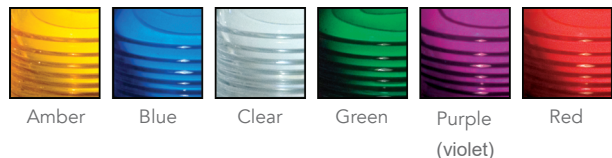
- 5-year warranty
- NEMA 4X
- UL Recognized
- 12-80 VDC input voltage
- Lexan Lens
- Neobe[®] Flashing Technology
- Pipe, Thread, or Surface mounts

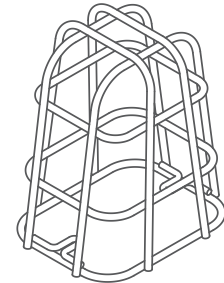
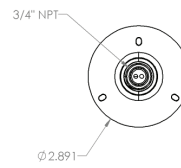
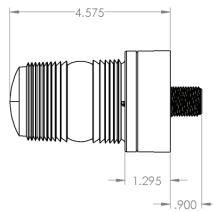
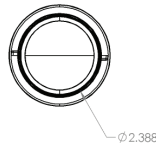
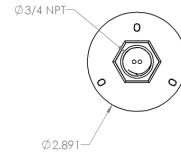
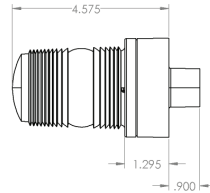
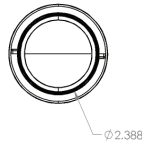
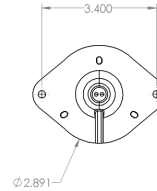
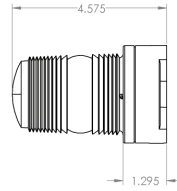
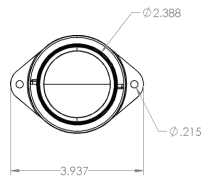
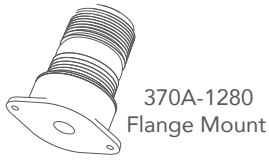
Tomar Electronics' 300A series is the newest addition to our MicroLED line of compact flashing LED's. Its 3 high-powered LED's assure maximum light output and full 360 degree coverage.

The 300A series is the ideal choice for Lift truck applications or wherever a compact warning light is required. It generates twice the light output of our 300L series in Amber, and its wider vertical beam spread assures better visibility. The durable vibration resistant construction, long life LED technology is backed up with a full five year warranty.

The tough Lexan lens is spun welded to the base to completely seal out moisture and prevent internal condensation. It is UL recognized and manufactured to NEMA 4X specifications, and is engineered to operate over a wide DC input voltage range of 10-100 VDC.

Lens colors





G470
Heavy Duty Guard

Specifications

Item	Description
Lamp Type	LED
Flash Rate	75 Neobe® flashes per minute – each consisting of 7 rapid flashes of light.
Voltage and Amperage	34 mA @ 12 VDC 15 mA @ 24 VDC 12 mA @ 36 VDC 11 mA @ 48 VDC 9 mA @ 80 VDC
Operating temperature	-40° to 65° C

Ordering Information

Model Description	Description	Voltage
370A-1280-(Color)	Flashing Flange Mount	12-80 VDC
390A-1280-(Color)	Flashing Pipe Mount	12-80 VDC
395A-1280-(Color)	Flashing Thread Mount	12-80 VDC

Architect and Engineer Specifications

The LED warning light shall be Tomar model 370A, 390A, 395A or approved equal. The light source shall consist of 3 high-powered LED's producing a 360° light beam spread. The lens and base material shall consist of Lexan® or equal polycarbonate material. The lens shall be spun welded to the base to completely seal out moisture and prevent internal condensation. The voltage range shall be 10-100 VDC, and operating temperature range of -40° C to 60° C. The visual warning signal shall be UL recognized, and NEMA 4X rated.

Options



Model No.	Description
G470	Heavy duty guard
440 STAND	Plastic Stand (Thread mount MicroLED models only)
MAM-DS30	Wall mount bracket