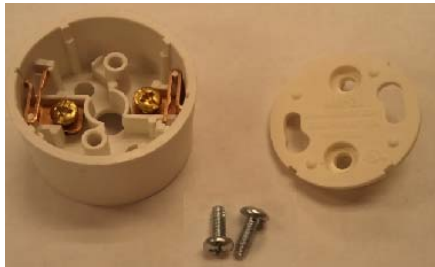




# GAYNOR

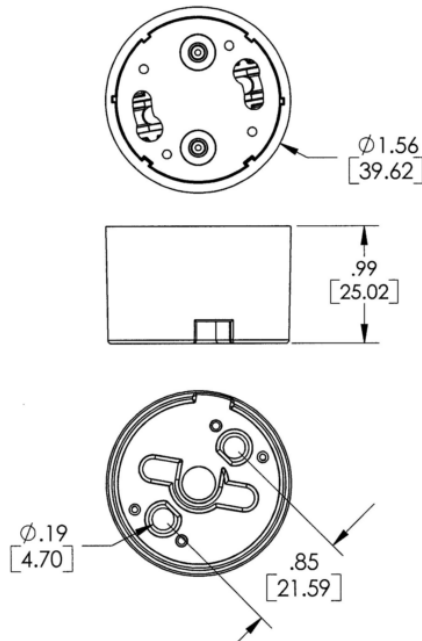


large photo

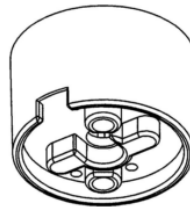
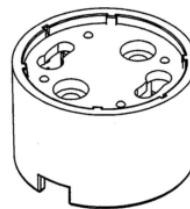
WATTS	BASE	LAMP HOLDER
All	GU24	408-2H

**408-2H**  
For use with twist and lock  
lamps with the GU24 base.

Two hole vertical screw  
mount.



Gaynor part #408-2H lampholder  
for use with twist and lock  
lamps with the GU24 Base



Material: White PBT  
Underwriters Lab. Listed  
Dimensions in inches & (millimeters)



#### Installation Instructions

1. Use Listed or R/C (AVLV,2) wire, 18 AWG, stranded, min. 90C
2. Run wires through the central hole and into the base of the socket.
3. Screw lampholder to mounting surface using the two through holes provided in the base of the socket (screws not provided).
4. Strip wires approximately 1/2 inch.
5. Run one wire through one of the channels on the side of the center boss and pass over the strain relief, around cover mounting screw boss and directly to the screw terminal.
6. Wrap the stripped portion of the wire around the screw of the screw terminal making a 180 degree bend. Tighten the screw.
7. Repeat this procedure for the other wire using the opposite channel.
8. Gently pull the wires to remove excess slack and install the cover using the two screws provided.

Made in U.S.A.