

SloanLED Prism¹² Mini

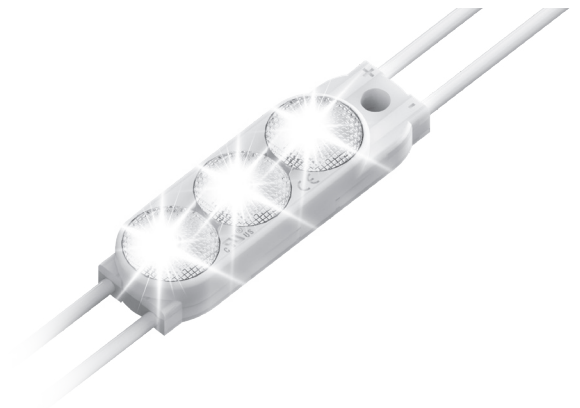
Premium 12V LED lighting solution for small channel letters

Specifications

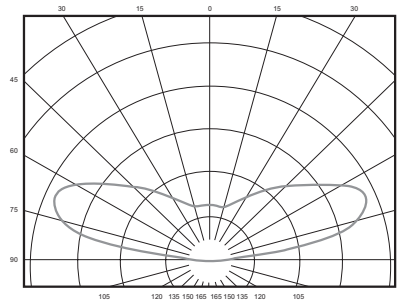
- Dimensions L x W x H** 1.88 in x 0.55 in x 0.43 in
(48 mm x 14 mm x 11 mm)
- LEDs per module** 3
- Operating temperature** -40° C to +70° C
- Optional dimming** PWM (Pulse width modulation, SloanLED Universal LED Wireless Dimmer 601115)
- Binning** MacAdam Ellipse 3-Step (whites)
- Protection class** IP66 & IP68*
- Life rating** >60,000 hours†
- Fastening** Peel-n-stick and mechanical



* Prism¹² IP68 test parameters are 1.3 m submersion for 30 minutes. Do not mount in submerged application or where module will be directly exposed to prolonged flowing or dripping water.
† Configured for Class 2 Output.
‡ Based on LM-80 data for white LEDs. LM-80 data unavailable for color LEDs.



Luminous Intensity Distribution



Whites

Modules per ft/m	Color temperature	Part number	Optimal can depth	Power per module	Lumens per module (nominal)	Efficacy	Packaging
2.0/ft (6.6/m)	7100 K	701269-7W12MJ1-MB	2-4" (50-100 mm)	0.38 W	50	132 lm/W	71.0 ft / 21.6 m (142 modules) per bag, 3 bags per carton
	6500 K	701269-6W12MJ1-MB					
	5000 K	701269-5W12MJ1-MB					
	4000 K	701269-4W12MJ1-MB					
	3000 K	701269-3W12MJ1-MB			45	118 lm/W	

Colors

Modules per ft/m	Color	Nominal wavelength	Part number	Optimal can depth	Power per module	Lumens per module (nominal)	Efficacy	Packaging
2.0/ft (6.6/m)	Red	628 nm	701269-RD12MJ1-MB	2-4" (50-100 mm)	0.30 W	12	40 lm/W	90.0 ft / 27.4 m (180 modules) per bag, 2 bags per carton
	Green	527 nm	701269-GR12MJ1-MB			30	100 lm/W	
	Blue	471 nm	701269-BL12MJ1-MB			8	27 lm/W	

Power Supply Capacity

12 VDC Power supply†	SloanLED Prism ¹² Mini	
	7100 K, 6500 K, 5000 K, 4000 K, 3000 K	Red, Green, Blue
20 W Power supply	23.5 ft (7.2 m) / 47 mods	30.0 ft (9.1 m) / 60 mods
60 W Power supply	71.0 ft (21.6 m) / 142 mods	90.0 ft (27.4 m) / 180 mods
2 x 60 W Power supply	2 x 71.0 ft (21.6 m) / 142 mods	2 x 90.0 ft (27.4 m) / 180 mods

SloanLED Prism¹² Mini

Premium 12V LED lighting solution
for small channel letters

Density Guidelines

Module color	Can Depth	Modules per foot	Max. stroke coverage per row		Inches on center dark vinyl*	Inches on center perforated vinyl*
			Single row	Multiple rows		
White (7100 K, 6500 K, 5000 K, 4000 K, 3000 K)	2"	3	4.5"	4" on center	2.5	1
	3"	2	7"	6" on center	4	3
	5"		13"	9" on center	8	7
Red	2"	3	4"	4" on center	3	2
	3"	2	7"	6" on center	5	4
	5"		10"	12" on center	11	10
Green	2"	3	3"	3" on center	2	1
	3"		6"	5" on center	4	3
	5"	2	10"	10" on center	9	8
Blue	2"	3	5"	4" on center	3	2
	3"	2	6"	5" on center	4	3
	5"		10"	10" on center	9	8

Notes:

- It is recommended that you first test LED density in sample letter/cabinet to evaluate brightness, uniformity and color.
- Should you have questions or require assistance in testing, please contact your SloanLED customer service representative.
- For multiple rows, start 3" (76 mm) from return.
- Products can be used in can depths deeper or shallower than listed above, but testing is recommended.
- Acrylic material used for all testing was 0.1875" (5 mm) thickness sign grade 7328 acrylic for White LEDs and 2157 for Red LEDs.

* Layout requiring one row with can depth 3" (76 mm) or less and/or perforated vinyl needs to be populated at four (4) modules per foot.

These guidelines are intended to provide only an approximation of product required for your sign, assuming an optimal balance of performance and cost. SloanLED is not responsible for the actual results based on the use of these guidelines.

SloanLED Headquarters

5725 Olivas Park Drive, Ventura, CA, USA
805.676.3200 • info@SloanLED.com

SloanLED Europe b.v.

Argonstraat 110, 2718 SN Zoetermeer, NL
+31 88 12 44 900 • europe@SloanLED.com



SloanLED.com

© 2022 SloanLED Rev B 2022-04-04



Visit product page
for details.

Specifications subject to change without notice.

