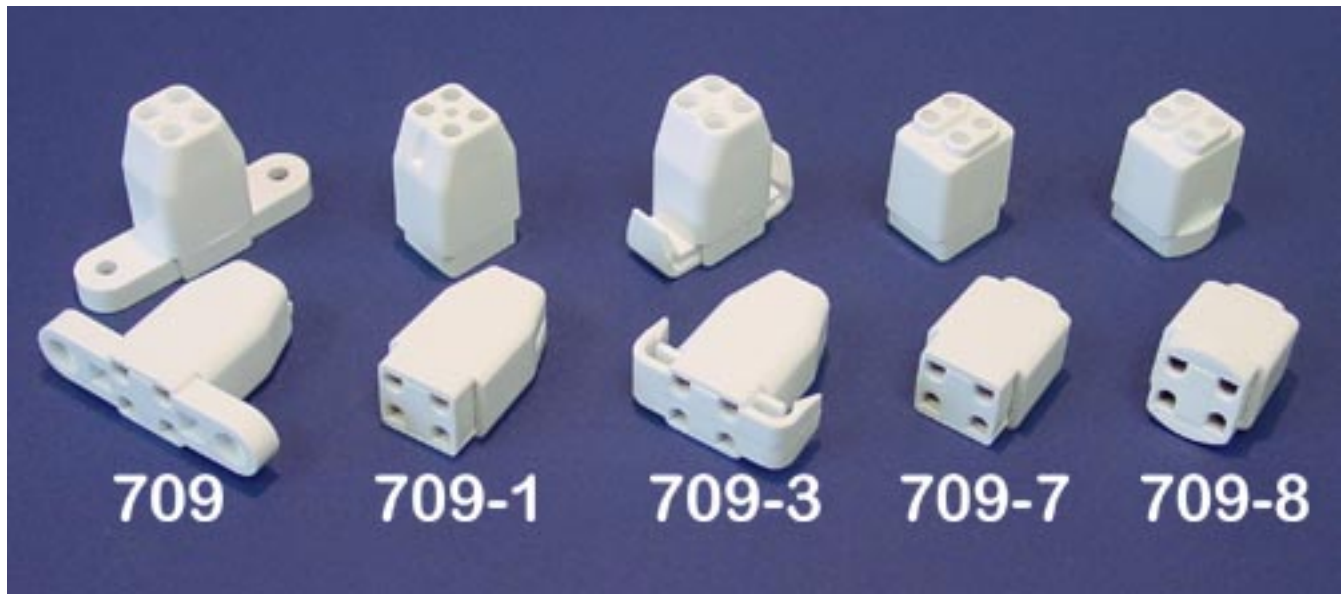


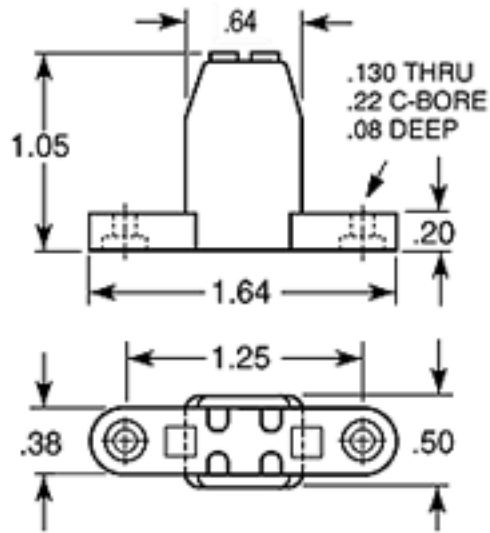
EDWIN GAYNOR CORP.

709 SERIES LAMP CONNECTORS

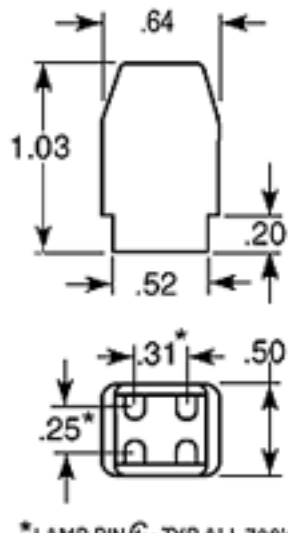
Mounting Style	Model #
2 Hole	709
None	709-1
Snap-In	709-3
None	709-7
None	709-8

709



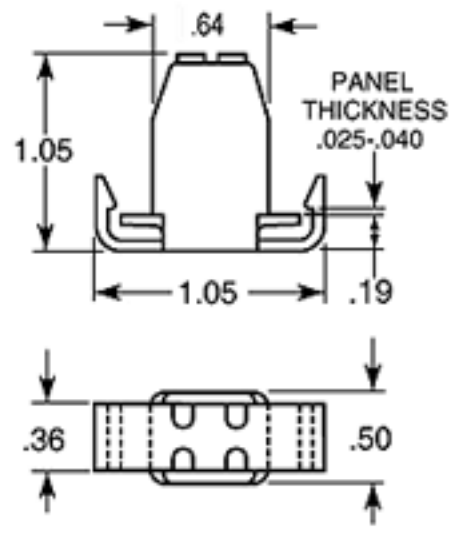


709



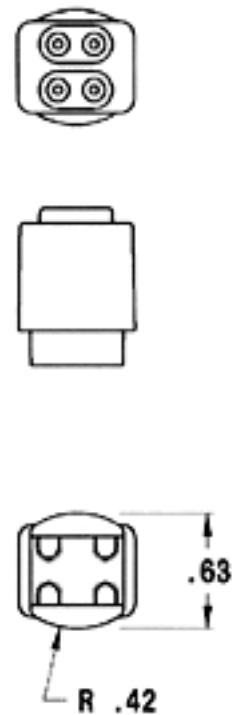
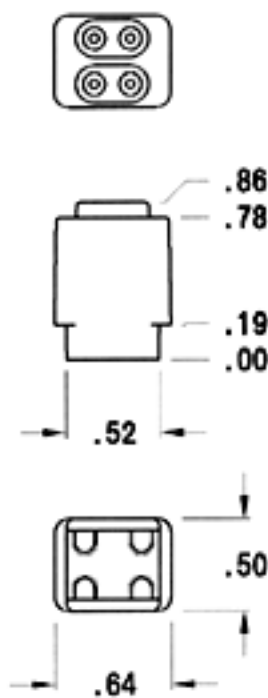
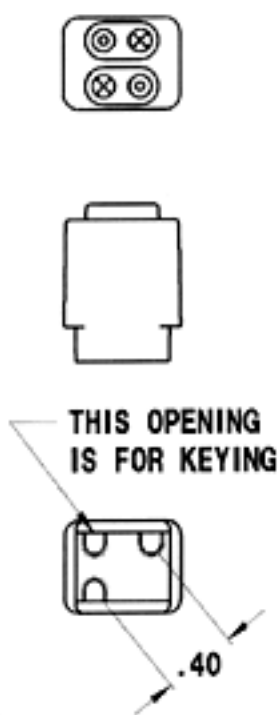
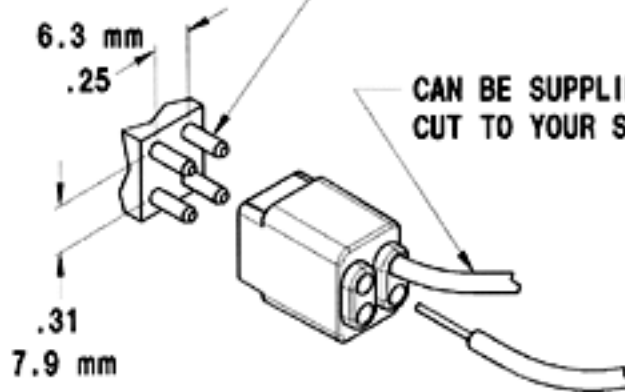
*LAMP PIN C - TYP. ALL 709's

709-1



709-3

FITS TO LAMPBASES
WITH PINS LOCATED
AS SHOWN



709-2709-7709-8

ALL DIMENSIONS SAME AS
709-7 EXCEPT AS SHOWN

PANEL CUTOUT 6

