



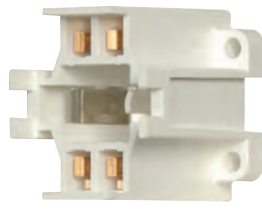
Fluorescent Lampholders

Socket—4-Pin Lamps Rated 75W-600V

Vertical Mount Socket — 4-Pin Lamps



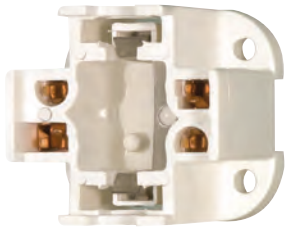
90-1786
26W-32W-42W - 4-Pin
G24Q-3 & GX24Q-4 Base
Bottom Screw Down
Vertical Mount



80-2237
57W- 4-Pin
GX24Q-5 Base
Bottom Screw Down
Vertical Mount



80-2321
70W- 4-Pin
GX24Q-6 Base
Bottom Screw Down
Vertical Mount



90-1549
13W 4-Pin Bottom Screw Down
G24Q-1 & GX24Q-1 Base
For: CF13DD/E & CF13DT/E
Vertical Mount



90-1550
18W 4-Pin Bottom Screw Down
G24Q-2 & GX24Q-2 Base
For: CF18DD/E & CF18DT/E
Vertical Mount



90-1551
26-32W 4-Pin Bottom Screw Down
G24Q-3 & GX24Q-3 Base
For: CF26DD/E & CF26DT/E
Vertical Mount



90-2498
42W 4-Pin Bottom Screw Down
G24Q-4 & GX24Q-4 Base
For: CF42DD/E & CF42DT/E
Vertical Mount

Horizontal Mount Socket - 4-Pin Lamps



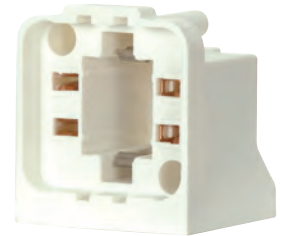
80-2106
13W 4-Pin Bottom Screw Down
G24Q-1 & GX24Q-1 Base
For: CF13DD/E & CF13DT/E
Horizontal Mount



80-2107
18W 4-Pin Bottom Screw Down
G24Q-2 & GX24Q-2 Base
For: CF18DD/E & CF18DT/E
Horizontal Mount



80-2108
26-32W 4-Pin Bottom Screw Down
G24Q-3 & GX24Q-3 Base
For: CF26DD/E & CF26DT/E
Horizontal Mount



80-2109
42W 4-Pin Bottom Screw Down
G24Q-4 & GX24Q-4 Base
For: CF42DD/E & CF42DT/E
Horizontal Mount

2-Pin CFL



4-Pin CFL



SOCKETS & LAMPHOLDERS