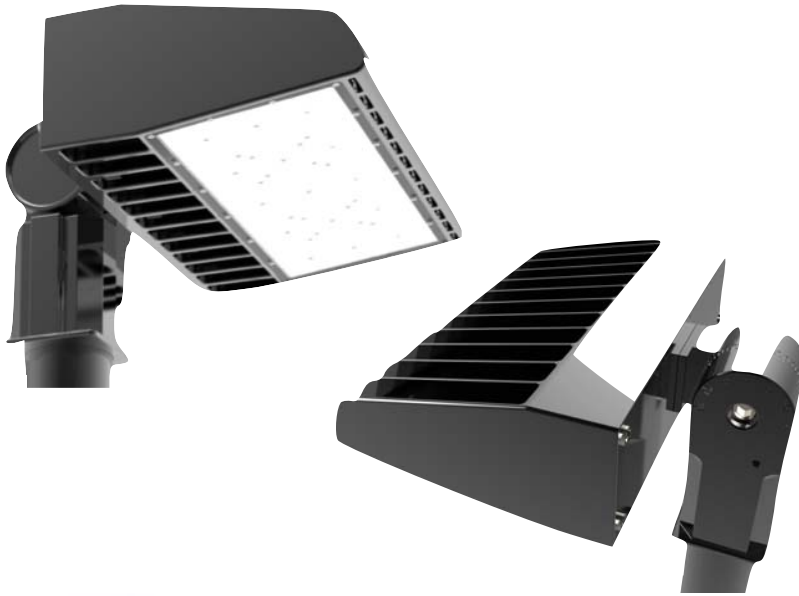


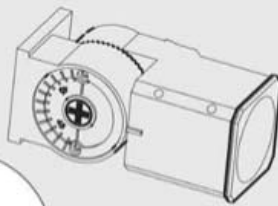
# LED Area Light



"This is the fixture of choice for all of our dealerships."



Slip Fitter



Length: 6.96-in  
Width: 3.071-in  
Height: 2.95-in



6" Extruded Arm

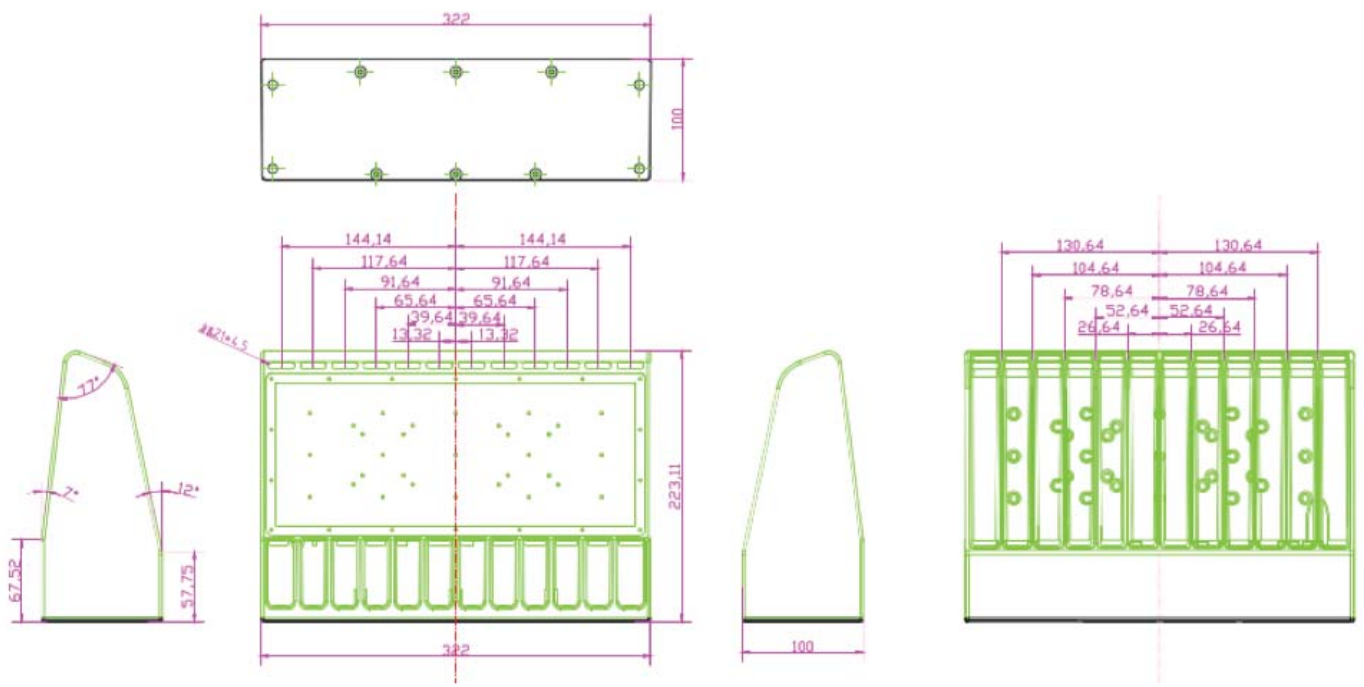
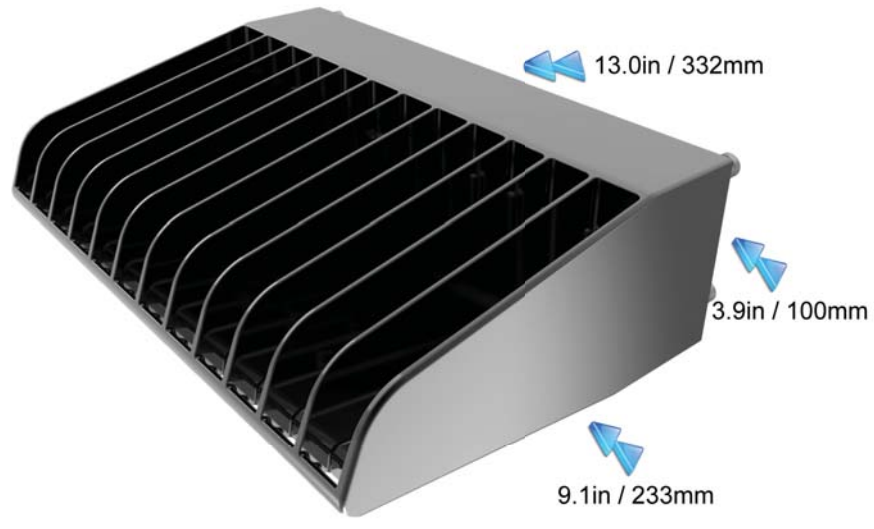


Length: 8.87-in  
Width: 4.5-in  
Height: 4.17-in

# Specifications

Model Number	AE-L-ALAS-35	AE-L-ALAS-50	AE-L-ALAS-80	AE-L-ALAS-100	AE-L-ALAS-120	AE-L-ALAS-150
DLC #	U-ARALS-35	U-ARALS-50	U-ARALS-80	U-ARALS-100	U-ARALS-120	U-ARALS-150
DLC Partner	Ultron Industries					
Input Wattage	35W	50W	80W	100W	120W	150W
Replacement Wattage	175W MH	250W MH	375W MH	500W MH	600W MH	750W MH
Input Voltage Range	100-277V					
Delivered Lumens	4800 lm	7000 lm	11000 lm	12212 lm	15700 lm	19500 lm
Lumen Efficiency	133 lm/w					
Color Rendering Index (CRI)	80+					
Color Temperature (Kelvin)	3000K-5700K					
Distribution Type	Type 2, Type 3, Type 4, Type 5 - Type 3 Default					
Power Factor	0.99					
Frequency	50/60Hz					
MAX THD (%)	15					
Min. Ambient Temp	-30.0°F / -34.4°C					
Max. Ambient Temp	130.0°F / 48.9°C					
Driver Manufacturer	Mean Well					
Chip Manufacturer	Phillips					
IP Rating	IP65					
Dimming Compatible	3 in 1 dimming function (1~10Vdc or PWM signal or resistance)					
Product Weight	9.0LBS / 4.1KG					
Product Height	3.9in / 100mm					
Product Length	13.0in / 332mm					
Product Width	9.1in / 233mm					
Lens	PC					
Materials	Die Cast Aluminum					
Finish	Bronze (Default) / Custom Finish Available					
LM70 Life Time	100,000 Hours					
UL/cUL	E481056					
DesignLights Consortium®	YES					
CE	YES					
FCC	YES					
Warranty	10 Years					

# Dimensions



## User Guide

### **Note:**

Please read this entire manual to fully understand and safely use this fixture. The products can be used at the voltage of 100-277V AC, 50/60HZ, suitable for indoor and outdoor, moisture proof and dust proof applications. Specifications are subject to change without notice. Please visit [www.altechefficiency.com](http://www.altechefficiency.com) for the most recent product information.

### **Unpacking:**

1. Unpack and carefully examine the product to make sure all of the materials are included.
2. if any part(s) were damaged during shipping, please contact us immediately and save all packing materials
3. DO NOT ATTEMPT TO USE THE FIXTURE IF IT IS DAMAGED IN ANY WAY.

### **Before You install:**

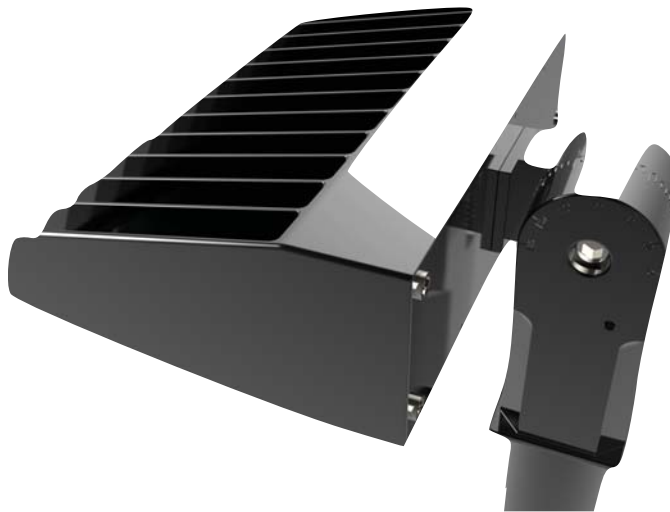
1. Before installing any light fixtures, carefully read and understand all of the installation instructions and product labels as well as all advisories and warnings. Failure to do so can result in injury and/or void the warranty.
2. CONSULT A QUALIFIED ELECTRICIAN TO ENSURE THE PROPER INSTALLATION OF ALL FIXTURES.
3. The product should be installed and operated in accordance with ALL relevant local codes.
4. There is risk of electric shock. Ensure that main power source is off when wiring any fixtures.

### **Maintenance:**

1. This fixture is designed for years with minimum care. For optimum performance, periodically clean the lens with a mild, non abrasive glass cleaner and soft cloth. DO NOT use solvents or cleaners containing abrasive agents. When cleaning the fixture, make sure you have the power turned off and do not spray liquid cleaner directly onto the LED chips, board or wiring.
2. Disconnect the product from the power supply prior to cleaning.
3. Use a dry or slightly moistened cloth for cleaning.
4. Never use any chemicals or abrasive materials on fixture or components.

## Installation Instructions for Slip Fitter Mount:

1. Ensure that the lamp pole diameter is less than the diameter of the connection tube diameter of 2 1/2". Loosen screws on connection tube.
2. Adjust the lighting angle as needed utilizing the slip fitter adjustment.



3. Connect the input and ground wires of the fixture to the power supply. **Brown is live. Blue is neutral. Green/Yellow is ground.**
4. Place lamp pole into connection tube and tighten screws.
5. The angle of the slip fitter mount can be adjusted from +90° through -90°.
6. Restore Power

## Installation Instructions for 6" Arm:

1. Remove the cover of the 6" arm bracket.
2. Be certain the support pole has adequate mounting surface and conforms to code
3. Determine whether to store the wire connections in the cable access cavity [\*] or in the pole interior
4. Open cable-access plate, safely store the tiny screws.
5. With the pole and its mounting holes set at the desired height, bring the lamp and bracket arm up to be mounted.
6. Support the backing plate inside the pole, aligned precisely with the mounting holes.
7. Support the luminaire arm near the mounting holes and thread power cable through the largest hole of the sealing gasket, through the pole's largest drilled hole, and through the backing plate's hole.
8. Feed the three Allen 6mm bolts through to the backing plate to set their screws hand tight. Then fully tighten the middle bolt, followed by the upper bolt, then the lower bolt.
9. Connect the input and ground wires of the fixture to the power supply. Brown is live. Blue is neutral. Green/Yellow is ground.
10. Re-fasten cover plate.
11. Enclose the open pole top and seal as necessary

