



WALL / CEILING
MOUNT LED

ANYX ARV13

Vandal Resistant

ARV13 Series LED

Fixture Type

Date

Job Name

Approved By

Catalog Number

SPECIFICATIONS



Description

The Anyx ARV13 LED fixtures build on the highly successful Anyx line. The Anyx ARV13 series features a durable, color-impregnated polycarbonate housing supported by a marine grade, die cast aluminum base plate to provide a lighting fixture that will survive in the harshest environments. The Anyx 13 series has been installed successfully in large scale projects such as dorm rooms, behavioral health facilities, transportation stations and public schools.

Trim

One piece injection molded UV stabilized polycarbonate mechanically interlocked to base plate and sealed against moisture and contaminants with two high temperature silicone O-rings. Color is molded through entire part for scratch resistant finish. Locked in place with one concealed tamper resistant set screw.

Lens

One piece injection molded prismatic polycarbonate with minimum 0.130" wall thickness. Secured to base plate by trim and sealed with two high temperature silicone O-rings.

Reflector

Heavy gauge formed aluminum primed and finished with electrostatically applied power coat.

Base Plate

Pressure die cast marine grade aluminum. Chemically primed and finished with electrostatically applied polyester powder coat.

Gaskets

Closed cell die cut neoprene gasket provided between fixture mounting plate and mounting surface. High temperature silicone O-ring between the trim and lens, between the lens and base plate, and between the mounting plate and base plate.

Drivers

Dimming to 1%, 10% or Programable Lumen Output driver options. Non-Dimming Driver is also available.

LED

2700K, 3000K, 3500K, 4000K, or 5000K and 82 CRI. L₇₀ projected life of over 130,000 hours at 50°C.

UL Listing

U.L., C.U.L. Wet Location Listing standard. IP66 standard in compliance with IEC 60598, certain exclusions may apply. Please refer to Ordering Information for details.

Buy American Act

Luminaire LED, LLC products are assembled in the USA. Our products meet the Buy America(n) government procurement requirements under FAR, DFARS, and DOT regulations. Please refer to www.acuitybrands.com/buy-american for additional information.

Warranty

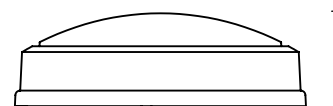
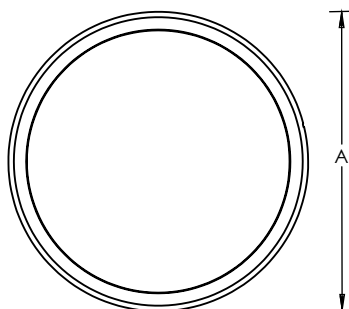
Lifetime warranty against vandalism. Luminaire LED will repair or replace any fixture damaged due to vandalism for the lifetime of the installation.
10-year warranty on LED boards against operational defects. Tested in accordance with LM-80.
This is the only warranty provided and no other statements in this specification sheet create any warranty of any kind. All other express and implied warranties are disclaimed.

Note

Actual performance may differ as a result of end-user environment and application.
All values are design or typical values, measured under laboratory conditions at 25 °C.
Specifications subject to change without notice.

DIMENSIONAL DATA

	A	B
ARV13 No Trim	13.13	3.85
ARV13 with Trim	13.13	4.00



ORDERING INFORMATION

Example: ARV13 MIN10 30W 27K 120 CLP WHT

Series*		Trim (Optional)		Drivers*		Wattage (Nominal)	Lumens (For PRD Only)	CCT*	
ARV13 Vandal Resistant Wallpack ADA Compliant 13" Round Luminaire		BRV	Single Bar Trim	MIN1	Dimming to 1%	15W	600LM - 3400LM - Lumens available in 100LM increments <i>Lumens required if PRD driver chosen</i>	27K	2700K
		CRV	Catcher's Mask Trim	MIN10¹	Dimming to 10%	25W		30K	3000K
		NRV	Nautical Trim	NODIM	Non-Dimming Driver	<i>Required for all drivers except PRD driver</i>		35K	3500K
		XRV	Cross Trim	PRD	Driver Programmed to Specific Lumen Output, Consult Factory			40K	4000K
		YRV	Eyelid Trim					50K	5000K
<i>PRD not available with Wattage PRD standard 0-10V dimming to 1%</i>									

Voltage*	Lens*	Finish*
120 120 Volt	CLP Clear Prismatic	BLK Black
277 277 Volt	OP Opal	WHT White
MVOLT 120-277 Volt		BRZ Bronze
347 347 Volt, Consult Factory		GRY Gray

*Required

OPTIONS

Emergency			
EMB310	Self contained, 90 minute emergency battery pack. 0°C (32°F) to 55°C (131°F). 800 lumens	EMB125R ^{3,4}	Remote inverter that will operate a maximum 125W load for 90 minutes. 20°C (68°F) to 30°C (86°F)
EMB310T20	Self contained, 90 minute emergency battery pack. 0°C (32°F) to 55°C (131°F). Meets CA Title 20 standards. 800 lumens	EMB250R ^{3,4}	Remote inverter that will operate a 250W maximum load for 90 minutes. 20°C (68°F) to 30°C (86°F)
EMB20R ^{2,3}	Remote mounted micro inverter that will operate a 25W maximum load for 90 minutes. 0°C (32°F) to 45°C (113°F)	EMB375R ^{3,4}	Remote inverter that will operate a 375W maximum load for 90 minutes. 20°C (68°F) to 30°C (86°F)

Back Box ⁵	Fusing	Photocell ⁵	Sensors ⁹
SHCAB ⁸ Low profile pressure die cast marine grade aluminum back box. Provided with (3) 1/2 " i.p.t. holes for conduit entry with threaded plugs <i>See mounting plate details for back box dimensions. IP66 excluded, Wet Listed Standard</i>	GLR ³ Fuse and Fuse Holder	PC ^{3,7} Photoelectric Switch <i>IP66 excluded, Wet Listed Standard</i>	OCC ⁸ Microwave occupancy sensor mounted behind the lens. On/Off operation only. OCCFA ⁸ Microwave occupancy sensor mounted behind the lens. All LED board sensed to dim to 50%, 30%, 20%, or 10%, field selectable low levels. Factory standard preset of 50% dimming level and 20 minute time out

Nightlight (Consult Factory)	Safety
AMBNLR Ring of Avago PLCC-4 Amber Series measured at 593nm, wired in parallel-series. Requires separately controlled circuit REDNLR Ring of Avago PLCC-4 RED Series measured at 621nm, wired in parallel-series. Requires separately controlled circuit	ALMR ^{4,9} Accessory metal ring that completely seals gap between mounting base and mounting surface. Ligature-resistant for ceiling mount applications only

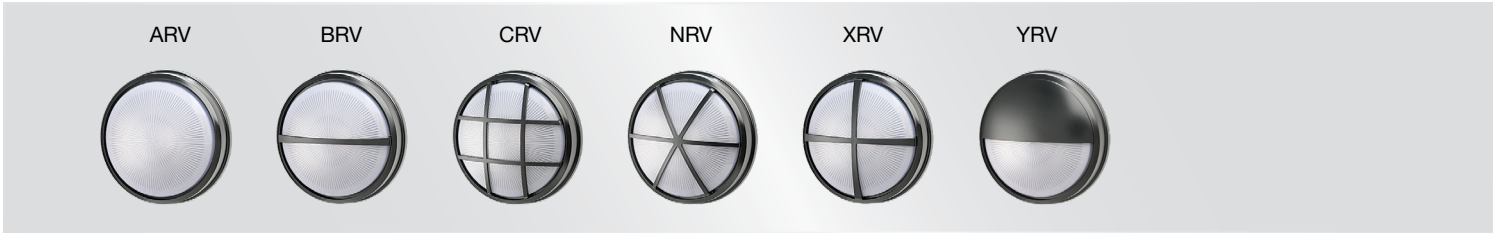
Ordering Notes

- Not available with 347.
- Not available with Lumens over than 2200 LM.
- Not available with MVOLT.
- Not available with Sensor options OCC or OCCFA.
- Not available with IP66.
- SHCAB not Available ALMR.
- PC Requires SHCAB.
- OCCFA and OCC not available with Nightlight options AMBNLR or REDNLR.
- Not available with YRV Trim.

Accessories: Order as separate catalog number

TXSD TORX® Screwdriver Bit
Initial shipment includes one (1) TXSD per fixture.

TRIM OPTIONS



PHOTOMETRIC DATA

Model	Watts	Input Watts	Lens	Delivered Lumens				
				2700K	3000K	3500K	4000K	5000K
ARV13	15W	17.0W	OP	1467	1486	1516	1561	1608
ARV13	15W	17.0W	CP	2021	2047	2089	2151	2215
ARV13	25W	27.5W	OP	2283	2311	2358	2429	2502
ARV13	25W	27.5W	CP	3145	3184	3249	3346	3446
YRV13	15W	16.6W	OP	705	714	728	751	774
YRV13	15W	16.6W	CP	972	983	1003	1035	1066
YRV13	25W	26.8W	OP	1097	1113	1132	1168	1202
YRV13	25W	26.8W	CP	1512	1533	1560	1609	1657
ARV13	PRD			Programmable Driver. Specify Delivered Lumens in Ordering Information.				

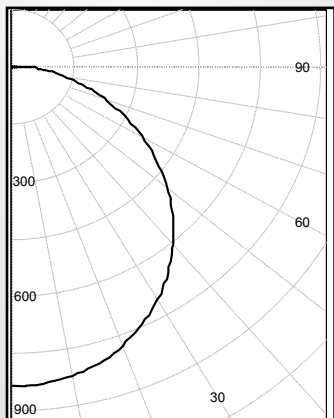
PHOTOMETRIC DATA

MODEL ARV13 25W 40K OP

Delivered Lumens: 2465 Lumens

Total Power: 27.5W

Testing was performed in accordance with IES LM-79-08



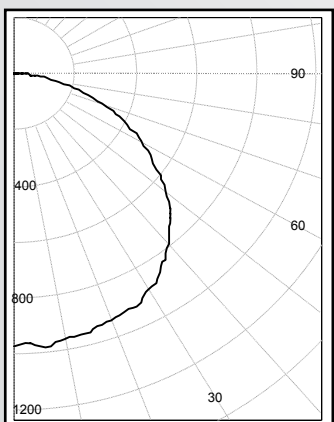
Zone	Lumens	% Lamps
0 - 30	648	26.3
0 - 40	1059	42.9
0 - 60	1862	75.5
60 - 90	571	23.2
0 - 90	2433	98.7
90 - 180	32	1.3
0 - 180	2465	100.0

MODEL ARV13 25W 35K CLP

Delivered Lumens: 3318 Lumens

Total Power: 27.3W

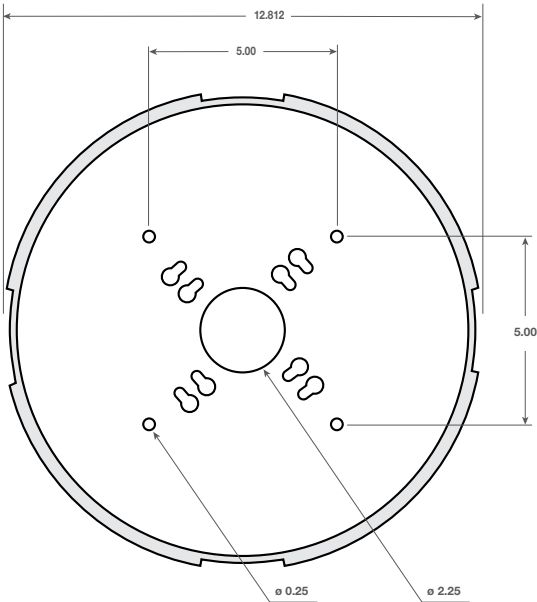
Testing was performed in accordance with IES LM-79-08



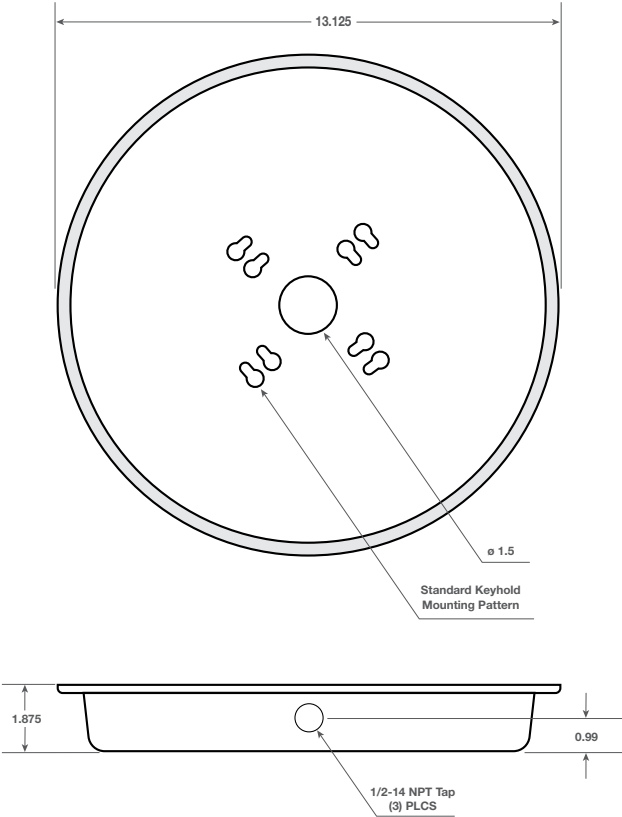
Zone	Lumens	% Lamps
0 - 30	786	25.2
0 - 40	1315	42.2
0 - 60	2382	76.4
60 - 90	712	22.8
0 - 90	3094	99.2
90 - 180	25	0.8
0 - 180	3118	100.0

MOUNTING PLATE DETAILS

ARV13 Base Plate



ARV13 Back Box



ARV13 Knockout

