

# CorePro LED PLL

## CorePro LED PLL HF/Mains 24W 840 4P

CorePro, LED, PL-L, HF/Mains, 2G11, 24 W, 55W PL-L, 4000 K, 3400 lm, CRI 80, 30000 hour(s)

Philips CorePro LED PLL is the ideal uplamping solution for downlights & luminaires in a wide range of general lighting applications. It integrates a LED light source into a traditional fluorescent form factor to offer superb energy savings over a lifetime that's twice as long as fluorescent alternatives.

### Product data

General Information	
Cap-Base	2G11
Nominal lifetime	30,000 hour(s)
Switching Cycle	200,000
Lighting Technology	LED
Flux measurement reference	Sphere
Warranty period	3 years
Light Technical	
Color Code	840 [CCT of 4000K]
Beam Angle (Nom)	160 degree(s)
Luminous Flux	3,400 lm
Color Designation	Cool White (CW)
Correlated Color Temperature (Nom)	4000 K
Luminous Efficacy (rated) (Nom)	141 lm/W
Color Consistency	<6
Color rendering index (CRI)	80
LLMF At End Of Nominal Lifetime (Nom)	70 %

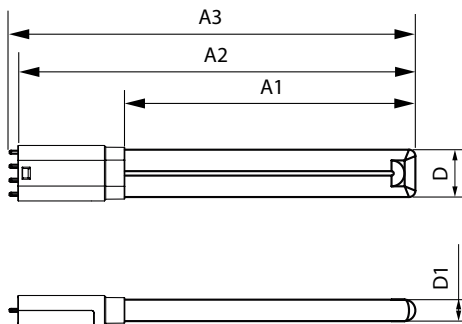
Photobiological safety according to EN 62471	RGO
Operating and Electrical	
Input Frequency	50 to 60 Hz
Power Consumption	24 W
Lamp Current (Nom)	128 mA
Wattage Equivalent	55 W
Starting Time (Nom)	0.5 s
Warm-up time to 60% light	0.5 s
Power Factor (Fraction)	0.9
Voltage (Nom)	220-240 V
LED alternative to fluorescent lamp power	55W PL-L
Inrush current at mains	5.12
Max. lamp no. on MCB B type 10A - Mains	76
Max. lamp no. on MCB B type 10A – EM ballast without Compensation Capacitor.	-
Max. lamp no. on MCB B type 10A – EM ballast with Compensation Capacitor.	-
Max. lamp no. on MCB B type 16A - Mains	122

# CorePro LED PLL

Max. lamp no. on MCB B type 16A – EM ballast without Compensation Capacitor.	-
Max. lamp no. on MCB B type 16A – EM ballast with Compensation Capacitor.	-
Ballast Compatibility	HF/Mains
<b>Temperature</b>	
T-Case Maximum (Nom)	65 °C
<b>Controls and Dimming</b>	
Dimmable	No
<b>Mechanical and Housing</b>	
Bulb Finish	Frosted
Bulb Material	Glass
Product Length	528 mm
Bulb Shape	PL-L
Net Weight (Piece)	0.230 kg
<b>Approval and Application</b>	
Energy Efficiency Class	D
Energy Consumption kWh/1000 h	24 kWh
EPREL Registration Number	2277180
CE mark	Yes

EU RoHS compliant	Yes
Flickering value (PstLM) - Flickering value as per EN 61000-3-3	1
Stroboscopic effect visibility measure (SVM)	0.4
Ambient temperature range	-20 to +45 °C
<b>Application Conditions</b>	
can it be used in closed luminaires	Yes
<b>Product Data</b>	
Order product name	CorePro LED PLL HF/Mains 24W 840 4P
Full product name	CorePro LED PLL HF/Mains 24W 840 4P
Full product code	872110305101100
Order code	05101100
Material Nr. (12NC)	929004268102
Numerator - Quantity Per Pack	1
EAN/UPC - Product/Case	8721103051011
Numerator - Packs per outer box	10
EAN/UPC - Case	8721103051028

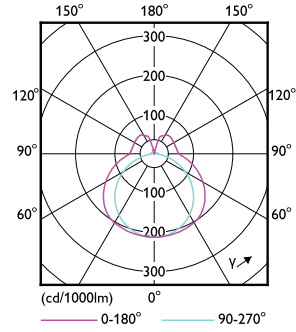
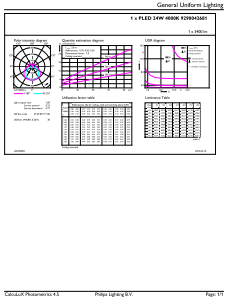
## Dimensional drawing



Product	D1	D	A1	A2	A3
CorePro LED PLL HF/Mains 24W 840 4P	17 mm	38 mm	413 mm	528 mm	535 mm

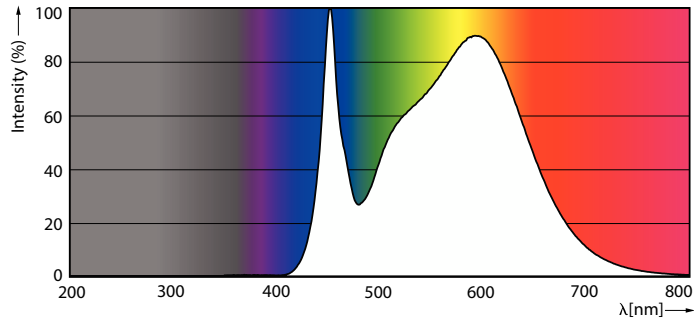
# CorePro LED PLL

## Photometric data



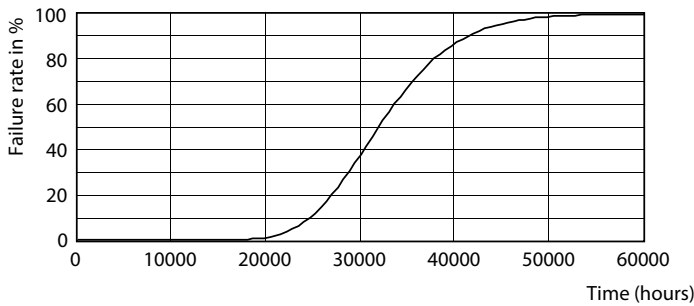
General uniform lighting - CorePro LED PLL HF/Mains 24W 840 4P

Light Distribution Diagram - CorePro LED PLL HF/Mains 24W 840 4P

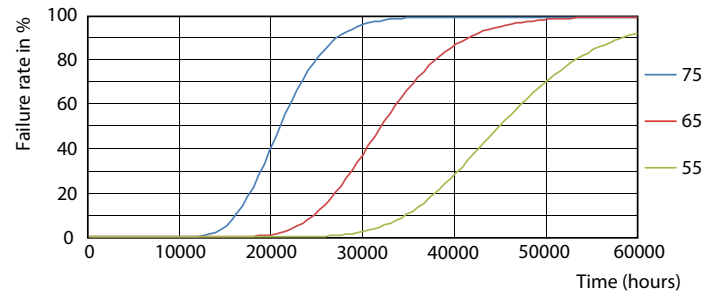


Spectral Power Distribution Colour - CorePro LED PLL HF/Mains 24W 840 4P

## Lifetime



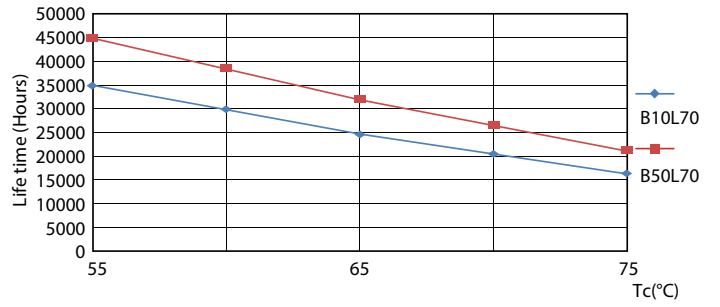
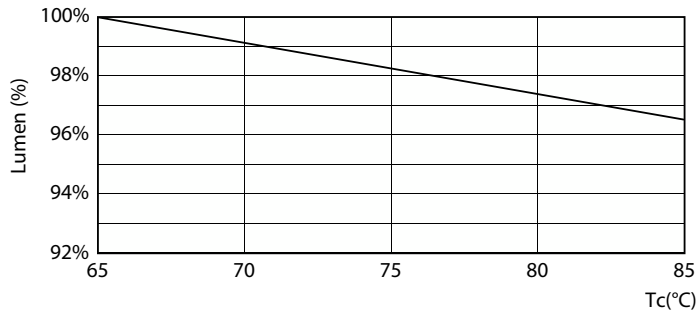
Life Expectancy Diagram



FailureRate

# CorePro LED PLL

## Lifetime



Lumen Maintenance Diagram - CorePro LED PLL HF/Mains 24W 840 4P

LifetimeVsTc



Lumen Maintenance Diagram - CorePro LED PLL HF/Mains 24W 840 4P

