



CorePro LED PLS



CorePro LED PLS 5W 840 2P G23

The Philips CorePro LED PLS integrates a LED light source into a traditional fluorescent form factor. This product is the ideal solution for uplamplng in general lighting applications: it meets basic lighting requirements, offers significant energy savings, and is environment-friendly.

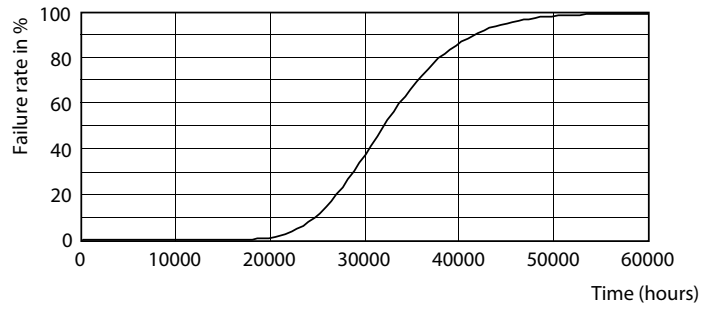
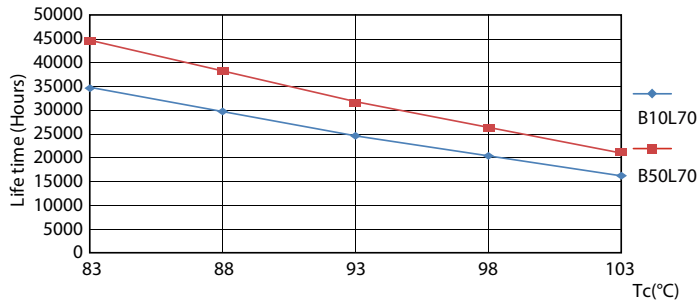
Product data

General information	
Cap-Base	G23 [G23]
EU RoHS compliant	Yes
Nominal Lifetime (Nom)	30000 h
Switching Cycle	50000
Flux measurement reference	Sphere
Light technical	
Color Code	840 [CCT of 4000K]
Beam Angle (Nom)	120 °
Luminous Flux (Nom)	550 lm
Color Designation	Cool White (CW)
Correlated Color Temperature (Nom)	4000 K
Luminous Efficacy (rated) (Nom)	110.00 lm/W
Color Consistency	<6
Color Rendering Index (Nom)	82
LLMF At End Of Nominal Lifetime (Nom)	70 %
Operating and electrical	
Input Frequency	50 to 60 Hz
Power (Nom)	5 W
Starting Time (Nom)	0.5 s
Warm Up Time to 60% Light (Nom)	0.5 s

Power Factor (Nom)	0.9
Voltage (Nom)	220-240 V
Temperature	
T-Ambient (Max)	45 °C
T-Ambient (Min)	-20 °C
T-Storage (Max)	65 °C
T-Storage (Min)	-40 °C
T-Case Maximum (Nom)	83 °C
Controls and dimming	
Dimmable	No
Mechanical and housing	
Bulb Material	Plastic
Product Length	170 mm
Bulb Shape	Tube, single-ended
Approval and application	
Energy Efficiency Class	F
Energy Saving Product	Yes
Approval Marks	TUV CE marking RoHS compliance KEMA Keur certificate

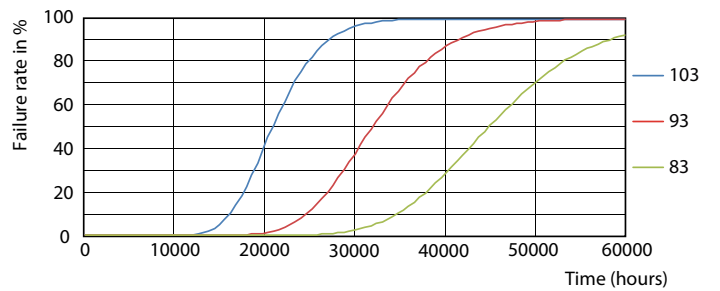
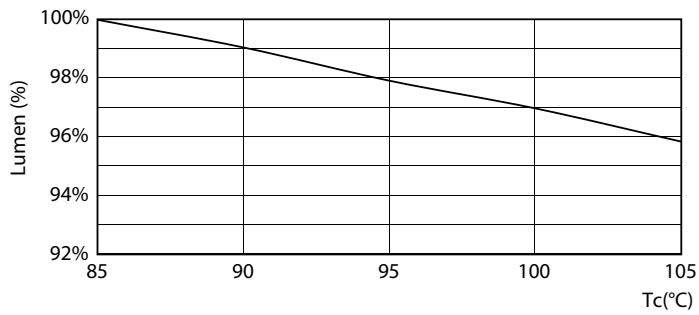
CorePro LED PLS

Lifetime



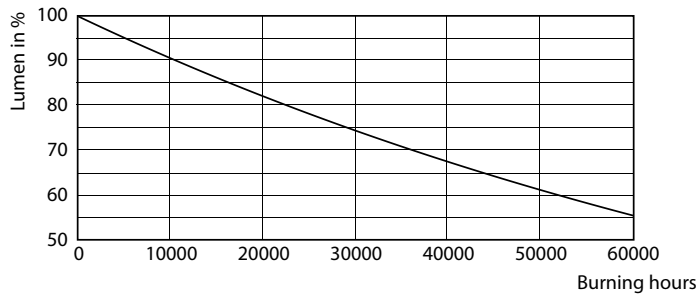
LEDtube CorePro PLS EM 5W G23 830 12D ND

LEDtube CorePro PLS EM 5W G23 830 12D ND



LEDtube CorePro PLS EM 5W G23 830 12D ND

LEDtube CorePro PLS EM 5W G23 830 12D ND



LEDtube CorePro PLS EM 5W G23 830 12D ND

CorePro LED PLS

