



# CorePro LEDtube EM/ Mains



## CorePro LEDtube 1200mm 15.5W 865 T8

The CorePro LEDtube is an affordable LED solution suitable for replacing T8 fluorescent lamps. The product provides a natural lighting effect for use in general lighting applications, as well as instant energy savings – an environmentally friendly solution.

### Warnings and Safety

• -

### Product data

General Information	
Cap base	G13 [Medium Bi-Pin Fluorescent]
Nominal lifetime	50,000 h
Switching Cycle	200,000
Lighting Technology	LED
Flux measurement reference	Sphere
CE mark	Yes
EU RoHS compliant	Yes

Light Technical	
Colour Code	865 [CCT of 6500K]
Beam angle (nom.)	240 degree(s)
Luminous Flux	1,800 lm
Colour designation	Cool Daylight
Correlated Colour Temperature	6500 K
Luminous efficacy (rated) (nom.)	116 lm/W
Colour consistency	<6
Colour rendering index (CRI)	80

Operating and Electrical	
Line Frequency	50 to 60 Hz
Input frequency	50 to 60 Hz
Power Consumption	15.5 W
Lamp current (nom.)	84 mA
Starting time (nom.)	0.5 s
Warm-up time to 60% light	0.5 s
Power Factor (Fraction)	0.9
Voltage (nom.)	220-240 V
LED alternative to fluorescent lamp power	36 W

Temperature	
Ambient temperature range	-20°C to 45°C

LLMF at end of nominal lifetime (nom.)	
LLMF at end of nominal lifetime (nom.)	70 %

Flickering value (PstLM)	
Flickering value (PstLM)	1

Stroboscopic effect	
Stroboscopic effect	0.9

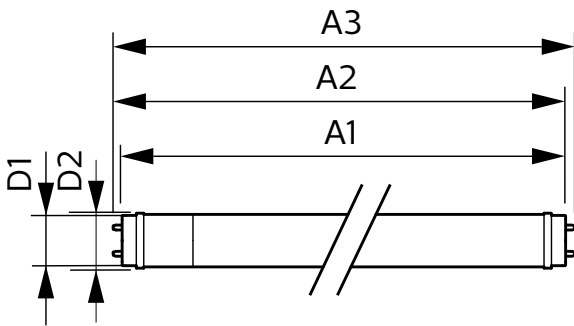
Photobiological safety according to EN 62471	
Photobiological safety according to EN 62471	RG0

# CorePro LEDtube EM/Mains

T-Case maximum (nom.)	60 °C
<b>Controls and Dimming</b>	
Dimmable	No
<b>Mechanical and Housing</b>	
Lamp Finish	Frosted
Bulb material	Glass
Product length	1,200 mm
Bulb shape	T8
<b>Approval and Application</b>	
Energy Efficiency Class	E
Energy-saving product	Yes
Approval marks	RoHS compliance CE marking KEMA Keur certificate

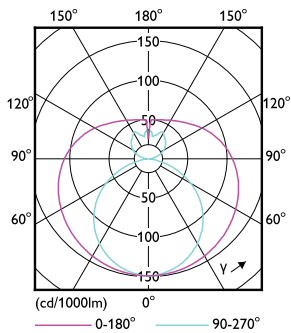
Energy consumption kWh/1,000 hours	16 kWh
EPREL registration number	1384729
<b>Product Data</b>	
Order product name	CorePro LEDtube 1200mm 15.5W 865 T8
Full product name	CorePro LEDtube 1200mm 15.5W 865 T8
Full EOC	871951444809400
Order code	44809400
Material no. (12 NC)	929003519802
SAP numerator – quantity per pack	1
EAN/UPC – Product/Case	8719514448094
Numerator – packs per outer box	20
EAN/UPC – Case	8719514448100

## Dimensional drawing

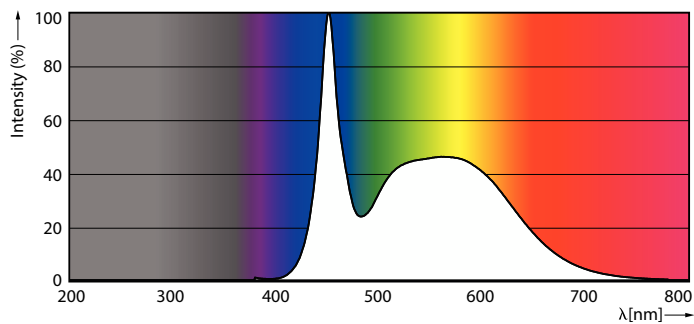


Product	D1	D2	A1	A2	A3
CorePro LEDtube 1200mm 15.5W 865 T8	25.7 mm	28 mm	1,198 mm	1,205 mm	1,212 mm

## Photometric data



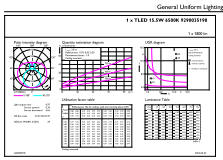
Light Distribution Diagram - CorePro LEDtube 1200mm 15.5W 865 T8



Spectral Power Distribution Colour - CorePro LEDtube 1200mm 15.5W 865 T8

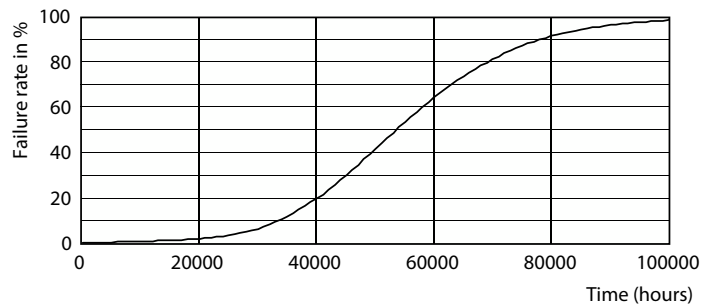
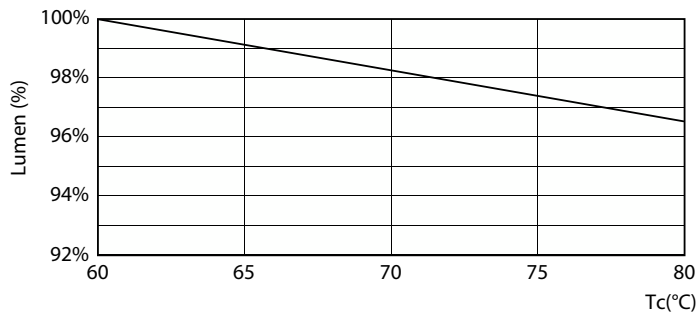
# CorePro LEDtube EM/Mains

## Photometric data



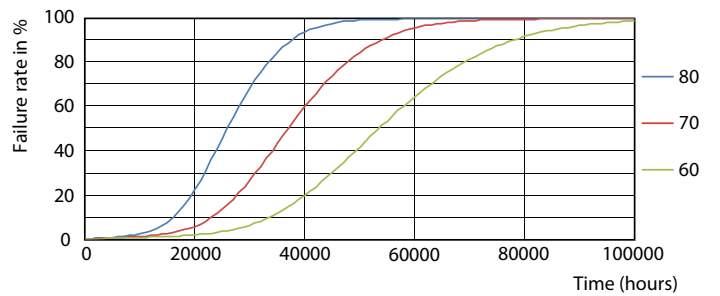
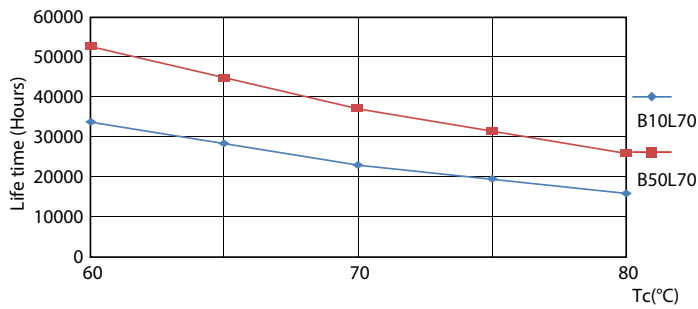
General uniform lighting - CorePro LEDtube 1200mm 15.5W 865 T8

## Lifetime



Lumen Maintenance Diagram - CorePro LEDtube 1200mm 15.5W 865 T8

Life Expectancy Diagram - CorePro LEDtube 1200mm 15.5W 865 T8



Life Expectancy Diagram - CorePro LEDtube 1200mm 15.5W 865 T8

Life Expectancy Diagram - CorePro LEDtube 1200mm 15.5W 865 T8

# CorePro LEDtube EM/Mains

## Lifetime



Lumen Maintenance Diagram - CorePro LEDtube 1200mm 15.5W 865 T8

