



# CorePro LEDtube EM/ Mains T8



## CorePro LEDtube 600mm 8W 865 T8

Philips CorePro LEDtubes are the quick and easy way to replace T8 fluorescent or other LED tubes with a fast pack back time. Not only does the Core range of LEDtubes require a low initial investment, but LED energy efficiency also delivers instant savings that you can bank on over a long and reliable lifetime. Plus, with the same lamp size and light distribution as fluorescent alternatives, you'll never know the difference. There are two ways to install these LED tubes: Rewire your existing fluorescent-based luminaires so the CorePro LEDtubes work directly on the Mains. Or simply change the fluorescent starter to an LED starter that can be used with your Electromagnetic ballasts.

### Warnings and Safety

- NOTE: The overall energy efficiency and light distribution of any installation that uses these lamps will be determined by the design of the installation.
- Installation must be done according to the installation diagrams provided with the lamp or available online. Installation must be done by a certified professional.

### Product data

General Information			
Cap-Base	G13	Luminous Flux	800 lm
Nominal lifetime	50,000 hour(s)	Luminous Efficacy (rated) (Nom)	100 lm/W
Switching Cycle	200,000	Color Designation	Cool Daylight
Lighting Technology	LED	Correlated Color Temperature (Nom)	6500 K
Flux measurement reference	Sphere	Color Consistency	<6
		Color rendering index (CRI)	80
		LLMF At End Of Nominal Lifetime (Nom)	70 %
		Flickering value (PstLM) - Flickering value as per EN 61000-3-3	1
		Stroboscopic effect visibility measure (SVM)	0.4

# CorePro LEDtube EM/Mains T8

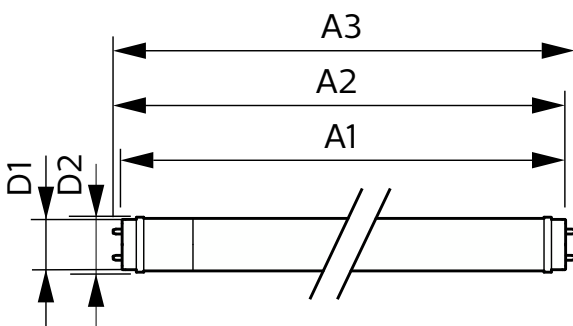
Photobiological safety according to EN 62471	RG0
<b>Operating and Electrical</b>	
Line Frequency	50 to 60 Hz
Input Frequency	50 to 60 Hz
Power Consumption	8 W
Lamp Current (Nom)	46 mA
Starting Time (Nom)	0.5 s
Warm-up time to 60% light	0.5 s
Power Factor (Fraction)	0.9
Voltage (Nom)	220-240 V
LED alternative to fluorescent lamp power	18 W
Inrush current at mains	4.27
Max. lamp no. on MCB B type 10A - Mains	119
Max. lamp no. on MCB B type 10A – EM ballast without Compensation Capacitor.	154
Max. lamp no. on MCB B type 10A – EM ballast with Compensation Capacitor.	24
Max. lamp no. on MCB B type 16A - Mains	191
Max. lamp no. on MCB B type 16A – EM ballast without Compensation Capacitor.	246
Max. lamp no. on MCB B type 16A – EM ballast with Compensation Capacitor.	39
Ballast Compatibility	EM/Mains
<b>Temperature</b>	
Ambient temperature range	-20 to +45 °C
T-Case Maximum (Nom)	50 °C
<b>Controls and Dimming</b>	
Dimmable	No
<b>Mechanical and Housing</b>	
Bulb Finish	Frosted

Bulb Material	Glass
Product Length	600 mm
Bulb Shape	T8
<b>Approval and Application</b>	
Energy Efficiency Class	F
Energy Saving Product	Yes
Approval Marks	RoHS compliance CE marking KEMA Keur certificate
Energy Consumption kWh/1000 h	8 kWh
EPREL Registration Number	1827695
CE mark	Yes
EU RoHS compliant	Yes

<b>Application Conditions</b>	
can it be used in closed luminaires	Yes

<b>Product Data</b>	
Order product name	CorePro LEDtube 600mm 8W 865 T8
Full product name	CorePro LEDtube 600mm 8W 865 T8
Full product code	871951432533300
Order code	929003022202
Material Nr. (12NC)	929003022202
Numerator - Quantity Per Pack	1
Net Weight (Piece)	0.220 kg
EAN/UPC - Product/Case	8719514325333
Numerator - Packs per outer box	10
EAN/UPC - Case	8719514325340

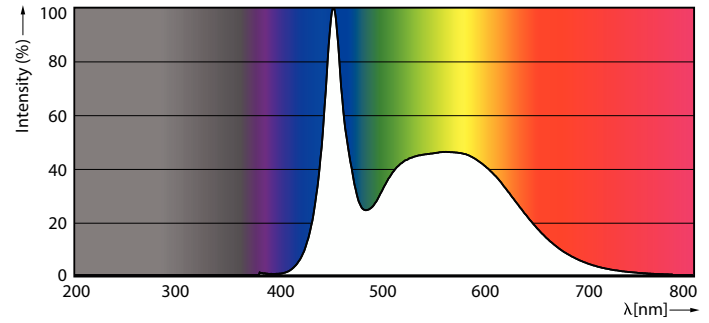
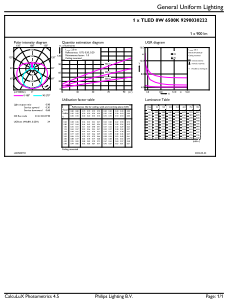
## Dimensional drawing



Product	D1	D2	A1	A2	A3
CorePro LEDtube 600mm 8W 865 T8	25.7 mm	28 mm	588.5 mm	595.5 mm	602.5 mm

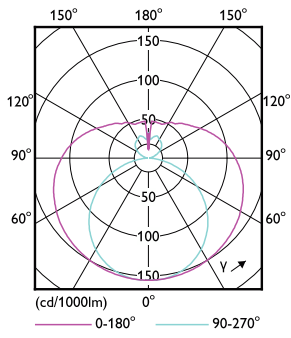
# CorePro LEDtube EM/Mains T8

## Photometric data



General uniform lighting - CorePro LEDtube 600mm 8W 865 T8

Spectral Power Distribution Colour - CorePro LEDtube 600mm 8W 865 T8

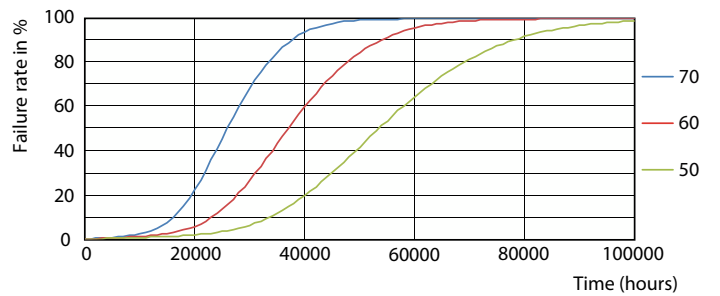


Light Distribution Diagram - CorePro LEDtube 600mm 8W 865 T8

## Lifetime



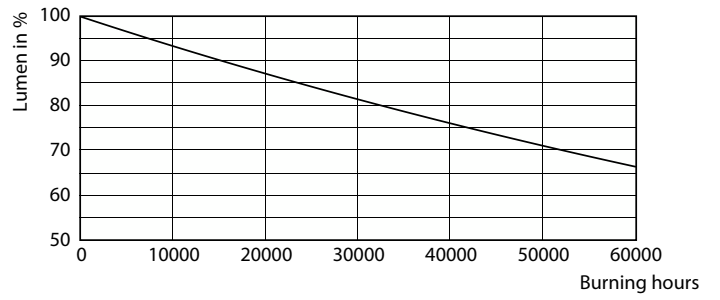
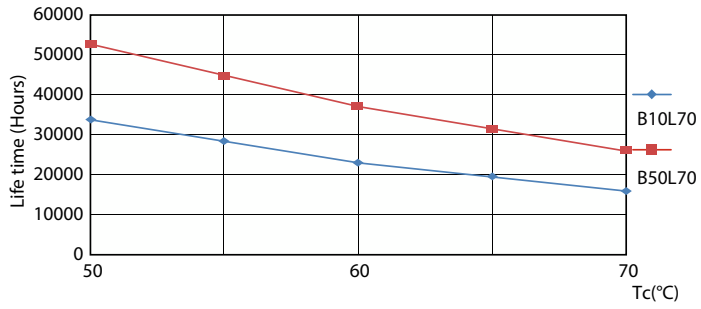
Life Expectancy Diagram



FailureRate

# CorePro LEDtube EM/Mains T8

## Lifetime



LifetimeVsTc

Lumen Maintenance Diagram - CorePro LEDtube 600mm 8W 865 T8

