



CorePro LED tube InstantFit HF T5

CorePro LEDtube HF 600mm HE 7.1W 840T5

LED, T5, HF, 600 mm, 7.1 W, 14W TL5 HE, 4000 K, 1050 lm, CRI 80, 50000 hour(s)

CorePro LEDtube InstantFit HF T5 is the quick and easy way to replace T5 fluorescent tubes with a fast payback time. Designed with industry leading ballast compatibility, the product is ideal for your everyday lighting jobs. With simply plug-and-play installation, it improves energy efficiency immediately and lasts for longer than conventional T5.

Product data

General Information		Color rendering index (CRI)	
Cap-Base	G5		80
Nominal lifetime	50,000 hour(s)	LLMF At End Of Nominal Lifetime (Nom)	70 %
Switching Cycle	50,000	Photobiological safety according to EN 62471	RG0
Lighting Technology	LED	Operating and Electrical	
Flux measurement reference	Sphere	Input Frequency	30K to 100K Hz
Warranty period	3 years	Power Consumption	7.1 W
Light Technical		Lamp Current (Max)	350 mA
Color Code	840 [CCT of 4000K]	Lamp Current (Min)	150 mA
Beam Angle (Nom)	200 degree(s)	Starting Time (Nom)	0.5 s
Luminous Flux	1,050 lm	Warm-up time to 60% light	0.5 s
Color Designation	Cool White (CW)	Power Factor (Fraction)	0.9
Correlated Color Temperature (Nom)	4000 K	Voltage (Nom)	40-70 V
Luminous Efficacy (rated) (Nom)	147 lm/W	LED alternative to fluorescent lamp power	14W TL5 HE
Color Consistency	<6	Inrush current at mains	-
		Max. lamp no. on MCB B type 10A - Mains	-

CorePro LED tube InstantFit HF T5

Max. lamp no. on MCB B type 10A – EM ballast without Compensation Capacitor.	-
Max. lamp no. on MCB B type 10A – EM ballast with Compensation Capacitor.	-
Max. lamp no. on MCB B type 16A – Mains	-
Max. lamp no. on MCB B type 16A – EM ballast without Compensation Capacitor.	-
Max. lamp no. on MCB B type 16A – EM ballast with Compensation Capacitor.	-
Ballast Compatibility	HF

Temperature

T-Case Maximum (Nom)	113 °F
----------------------	--------

Controls and Dimming

Dimmable	No
----------	----

Mechanical and Housing

Bulb Finish	Frosted
Bulb Material	Glass
Product Length	23-5/8 inch
Bulb Shape	T5
Net Weight (Piece)	0.187 lb

Approval and Application

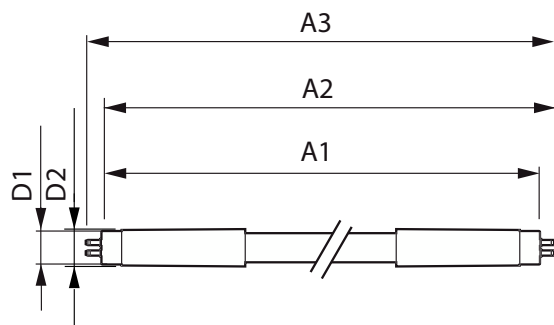
Energy Efficiency Class	D
-------------------------	---

Energy Saving Product	Yes
Approval Marks	RoHS compliance KEMA Keur certificate
Energy Consumption kWh/1000 h	8 kWh
EPREL Registration Number	1880102
CE mark	Yes
EU RoHS compliant	Yes
Ambient temperature range	-4 to +113 °F

Product Data

Order product name	CorePro LEDtube HF 600mm HE 7.1W 840T5
Full product name	CorePro LEDtube HF 600mm HE 7.1W 840T5
Full product code	872016929542100
Order code	929003774202
Material Nr. (12NC)	929003774202
Numerator - Quantity Per Pack	1
EAN/UPC - Product/Case	8720169295421
Numerator - Packs per outer box	10
EAN/UPC - Case	8720169295438

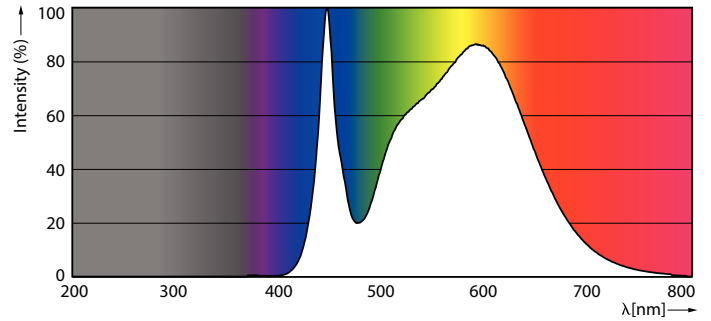
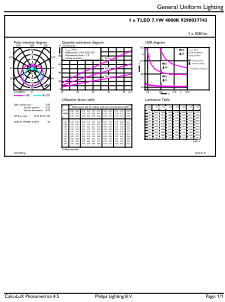
Dimensional drawing



Product	D1	D2	A1	A2	A3
CorePro LEDtube HF 600mm HE 7.1W 840T5	5/8 inch	0 inch	21-5/8 inch	21-15/16 inch	22-3/16 inch

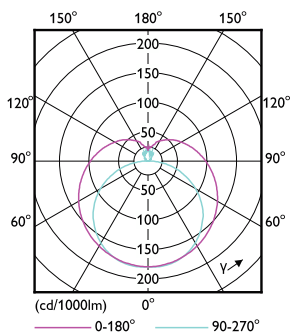
CorePro LED tube InstantFit HF T5

Photometric data



General uniform lighting - CorePro LEDtube HF 600mm HE 7.1W 840T5

Spectral Power Distribution Colour - CorePro LEDtube HF 600mm HE 7.1W 840T5



Light Distribution Diagram - CorePro LEDtube HF 600mm HE 7.1W 840T5

Lifetime



Life Expectancy Diagram



Lumen Maintenance Diagram - CorePro LEDtube HF 600mm HE 7.1W 840T5

CorePro LED tube InstantFit HF T5

Lifetime



FailureRate

LifetimeVsTc



Lumen Maintenance Diagram - CorePro LEDtube HF 600mm HE 7.1W 840T5

