



CorePro LED tube Universal T8



CorePro LEDtube UN 1200mm HO 18W865 T8

The new Philips CorePro LEDtube Universal T8 brings simplicity to your lighting project. You don't need to pay attention to the driver technology anymore. Thanks to a unique design, Philips CorePro LEDtube Universal T8 directly fits in luminaires operating either on Electro Magnetic ballasts or HF Electronic ballasts or mains power connection. So simple to operate and no need to carry double stock of products! Perfectly safe, reliable & easy to install Philips CorePro LEDtube Universal T8 is the ideal alternative to standard fluorescent tubes to save energy and lower investment.

Product data

General Information		Colour rendering index (CRI)	
Cap base	G13 [Medium Bi-Pin Fluorescent]		80
Nominal lifetime	50,000 h	LLMF at end of nominal lifetime (nom.)	70 %
Switching Cycle	50,000	Flickering value (PstLM)	1
Lighting Technology	LED	Stroboscopic effect	0.9
Flux measurement reference	Sphere	Photobiological safety according to EN 62471	RG0
CE mark	Yes	Operating and Electrical	
EU RoHS compliant	Yes	Line Frequency	50 to 60 Hz
Light Technical		Input frequency	50 to 60 Hz
Colour Code	865 [CCT of 6500K]	Power Consumption	18 W
Beam angle (nom.)	240 degree(s)	Lamp current (nom.)	100 mA
Luminous Flux	2,000 lm	Starting time (nom.)	0.5 s
Colour designation	Cool Daylight	Warm-up time to 60% light	0.5 s
Correlated Colour Temperature	6500 K	Power Factor (Fraction)	0.9
Luminous efficacy (rated) (nom.)	111 lm/W	Voltage (nom.)	220-240 V
Colour consistency	<6	LED alternative to fluorescent lamp power	36 W
		Inrush current at mains	9.4

CorePro LED tube Universal T8

Max. lamp no. on MCB B type 10A — Mains	82
Max. lamp no. on MCB B type 10A — EM ballast without Comp. Cap.	104
Max. lamp no. on MCB B type 10A — EM ballast with Comp. Cap.	19
Max. lamp no. on MCB B type 16A — Mains	131
Max. lamp no. on MCB B type 16A — EM ballast without Comp. Cap.	166
Max. lamp no. on MCB B type 16A — EM ballast with Comp. Cap.	30

Temperature

Ambient temperature range	-20°C to 45°C
T-Case maximum (nom.)	55 °C

Controls and Dimming

Dimmable	No
----------	----

Mechanical and Housing

Lamp Finish	Frosted
Bulb material	Glass
Product length	1,200 mm
Bulb shape	T8

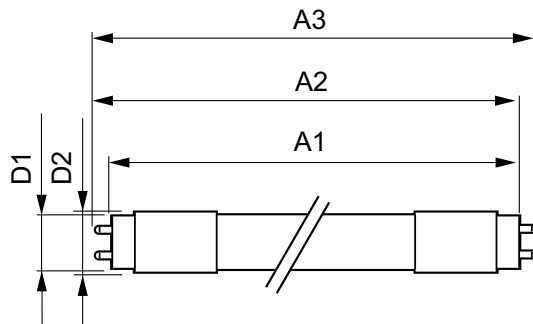
Approval and Application

Energy Efficiency Class	E
Energy-saving product	Yes
Approval marks	RoHS compliance TUV CE marking KEMA Keur certificate
Energy consumption kWh/1,000 hours	18 kWh
EPREL registration number	1315789

Product Data

Order product name	CorePro LEDtube UN 1200mm HO 18W865 T8
Full product name	CorePro LEDtube UN 1200mm HO 18W865 T8
Full EOC	871869680170300
Order code	80170300
Material no. (12 NC)	929001869402
SAP numerator – quantity per pack	1
EAN/UPC – Product/Case	8718696801703
Numerator – packs per outer box	10
EAN/UPC - Case	8718696801710

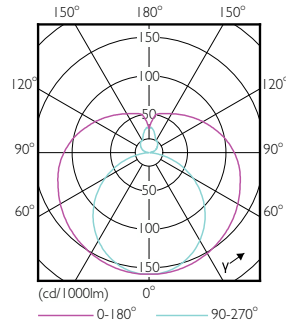
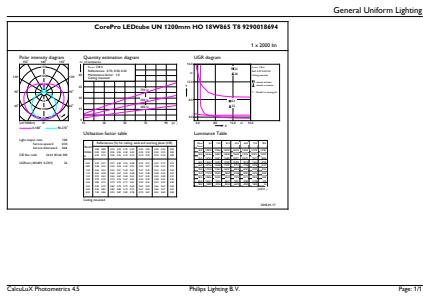
Dimensional drawing



Product	D1	D2	A1	A2	A3
CorePro LEDtube UN 1200mm HO 18W865 T8	27.9 mm	28 mm	1,199.4 mm	1,205.3 mm	1,213.6 mm

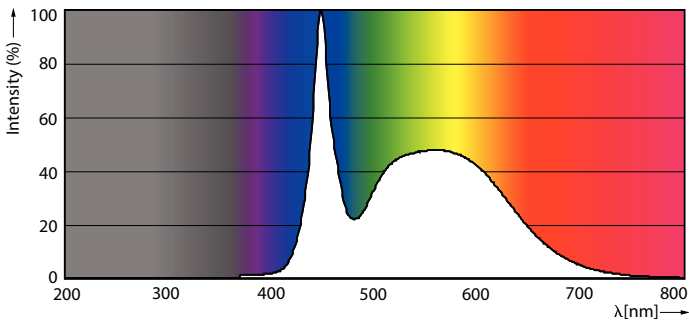
CorePro LED tube Universal T8

Photometric data



General uniform lighting - CorePro LEDtube UN 1200mm HO 18W865 T8

Light Distribution Diagram

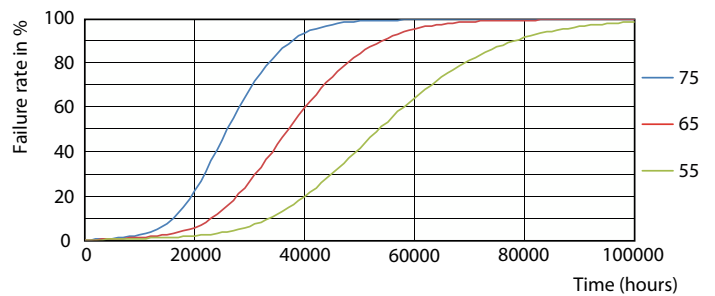


Spectral Power Distribution Colour - CorePro LEDtube UN 1200mm HO 18W865 T8

Lifetime



Life Expectancy Diagram - CorePro LEDtube UN 1200mm HO 18W865 T8



Life Expectancy Diagram - CorePro LEDtube UN 1200mm HO 18W865 T8

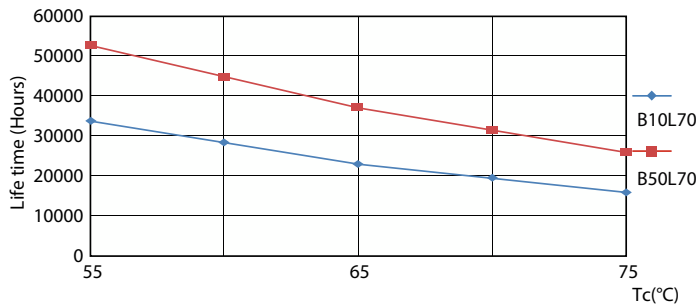
CorePro LED tube Universal T8

Lifetime



Lumen Maintenance Diagram - CorePro LEDtube UN 1200mm HO 18W865 T8

Lumen Maintenance Diagram - CorePro LEDtube UN 1200mm HO 18W865 T8



Life Expectancy Diagram - CorePro LEDtube UN 1200mm HO 18W865 T8

