



## FEATURES & SPECIFICATIONS

**INTENDED USE** — Ideal for use in food and beverage processing, cold storage and garden centers. Fiberglass enclosure protects fixture while remaining easy to service and clean. Not for use or installation in direct outdoor sunlight. Must be installed under canopy or covered ceiling. **Certain airborne contaminants can diminish the integrity of acrylic and/or polycarbonate.** [Click here for Acrylic-Polycarbonate Compatibility table for suitable uses.](#)

**Certain airborne contaminants may adversely affect the functioning of LEDs and other electronic components, depending on various factors such as concentrations of the contaminants, ventilation, and temperature at the end-user location.** [Click here for a list of substances that may not be suitable for interaction with LEDs and other electronic components.](#)

**CONSTRUCTION** — One-piece 5VA rated fiberglass housing with continuous poured-in-place, closed-cell gasket. Three piece captive latches lock onto the housing and keep latches from becoming displaced during strenuous cleaning. 7/8" opening on each end, suitable for use with 1/2" trade size connector/conduit.

**OPTICS** — Injection-molded acrylic, impact-resistant diffuser (.080" thick), available in clear or frosted, features side lineal prisms and frosted ends (clear). Frosted lens recommended for lower mounting heights and enhanced visual comfort. UV stabilized polycarbonate diffuser option available (.080" thick) for increased impact resistance. Three piece stainless steel latches keep lens securely fastened.

**ELECTRICAL** — Utilizes high-efficiency LEDs mounted to core circuit boards. High-efficiency drivers operate 120-480 volt offered with 0-10 volt dimming, allowing granular control when coupled with wireless networking controls. Luminaire Surge Protection Level: Designed to withstand up to 6kV/3kA per ANSI C82.77-5-2015.

Expected service life of 72,000 hours at 80% lumen maintenance (L80); predicted life of more than 100,000 hours.

**INSTALLATION** — Luminaire can be surface or suspend mounted. Power connection is easily accommodated through pre-drilled holes at each end, watertight plugs ship standard on each end. Stainless steel mounting straps (standard), included for suspension with aircraft cable (cable not included). Optional stainless steel V-hooks available for chain hanging (chain not included). Mounting straps also accommodate RMKSS or RMKZP accessory for surface mounting.

**LISTINGS** — CSA Certified to UL and C-UL Standards. Suitable for wet location. IP65, IP66, IP67 (4ft. only) and IP69k (2ft. only) rated and certified to meet NSF Splash Zone 2. NEMA 4X rated. Sensors maintain IP65 and IP66 only. Ambients listed on page 4.

DesignLights Consortium® (DLC) Premium qualified product and DLC qualified product. Not all versions of this product may be DLC Premium qualified or DLC qualified. Please check the DLC Qualified Products List at [www.designlights.org/QPL](http://www.designlights.org/QPL) to confirm which versions are qualified.

### GOVERNMENT PROCUREMENT

**BAA** – Buy America(n) Act: Product with the BAA option qualifies as a domestic end product under the Buy American Act as implemented in the FAR and DFARS. Product with the BAA option also qualifies as manufactured in the United States under DOT Buy America regulations.

**BABA** – Build America Buy America: Product with the BAA option also qualifies as produced in the United States under the definitions of the Build America, Buy America Act.

Please refer to [www.acuitybrands.com/resources/buy-american](http://www.acuitybrands.com/resources/buy-american) for additional information.

**WARRANTY** — 5-year limited warranty. This is the only warranty provided and no other statements in this specification sheet create any warranty of any kind. All other express and implied warranties are disclaimed. Complete warranty terms located at: [www.acuitybrands.com/support/warranty/terms-and-conditions](http://www.acuitybrands.com/support/warranty/terms-and-conditions)

**NOTE:** Actual performance may differ as a result of end-user environment and application.

All values are design or typical values, measured under laboratory conditions at 25 °C.

Specifications subject to change without notice.

Catalog Number
Notes
Type



High-Pressure Hose-Down

# EMW LED

FOOD PROCESSING/COLD STORAGE



## A+ Capable Luminaire

This item is an A+ capable luminaire, which has been designed and tested to provide consistent color appearance and out-of-the-box control compatibility with simple commissioning.

- All configurations of this luminaire meet the Acuity Brands' specification for chromatic consistency
- This luminaire is part of an A+ Certified solution for nLight® control networks marked by a shaded background\*

To learn more about A+, visit [www.acuitybrands.com/aplus](http://www.acuitybrands.com/aplus).

\*See ordering tree for details

# EMW LED High-Pressure Hose-Down, LED



A+ Capable options indicated by this color background.

## ORDERING INFORMATION

Lead times will vary depending on options selected. Consult with your sales representative.

**Example:** EMW 24000LM FST MD MVOLT GZ10 35K 90CRI

EMW											
Series	Length	Nominal Lumens		Diffuser		Distribution		Voltage		Driver	
EMW	L24	9000LM	9,000 lumens	ACL	Clear acrylic	ND	Narrow distribution	MVOLT	120-277V,50/60HZ	GZ10	0-10v dimming
		12000LM	12,000 lumens	PCL	Clear polycarbonate			120	120V, 50/60HZ		
		15000LM	15,000 lumens	FST	Frosted acrylic	MD	Medium distribution	277	277V, 50/60HZ		
		18000LM	18,000 lumens					HVOLT	347-480V,50/60HZ		
		24000LM	24,000 lumens					347	347V, 50/60HZ		
	L48	18000LM	18,000 lumens					480	480V, 50/60HZ		
		24000LM	24,000 lumens								
		28000LM	28,000 lumens								
		36000LM	36,000 lumens								
		40000LM	40,000 lumens								

Color temperature	CRI	Options	
30K 3000 K	80CRI 80 CRI	<b>Emergency:</b>	<b>Other Options:</b>
35K 3500 K	90CRI 90 CRI	E10WLCP Power Sentry® PS1055LCP, 10 watt internal constant power emergency driver, self-diagnostic test switch/pilot light, 5°C min, UL924 Compliant, Certified in CA Title 20 MAEDBS (LINK) ‡	BAA Buy America(n) Act and/or Build America Buy America Qualified
40K 4000 K		FE14WCP 14 watt internal constant power emergency driver, self-diagnostic test switch/pilot light, 10°C min, UL924 Compliant, Certified in CA Title 20 MAEDBS ‡	SPD Surge protection device (10kV/6kA)
50K 5000 K		<b>Cordsets:</b>	<b>Mounting:</b>
		CS6G16STOW5D Cord only (no plug), 18 gauge, 5 conductors, includes 0-10V dimming leads, white, 6ft ‡	(blank) (4) Stainless steel mounting straps (suspended mount)
		CS88 Cord with Brad Mini Change® male connector, non-metallic coupling nut, 3 pole, 16 gauge, yellow, wet location, 6ft ‡	EMK (2) Stainless steel end mount brackets (suspended mount) ‡
		CS88L12 Cord with Brad Mini Change® male connector, non-metallic coupling nut, 3 pole, 16 gauge, yellow, wet location, 12ft ‡	MHKB (2) Stainless steel V-hook and (4) mounting brackets (suspended mount)
		CS88R Receptacle with Brad Mini Change® male connector, stainless steel coupling nut, 3 pole, 16 gauge leads, wet location ‡	RMKSS (2) Stainless steel rigid mount brackets (surface mount) ‡
		CS89 Cord only (no plug), 16 gauge, 3 conductors, 6ft, white, wet location ‡	RMKZP (2) Zinc plated rigid mount brackets (surface mount) ‡
		CS89L12 Cord only (no plug), 16 gauge, 3 conductors, 12ft, white, wet location ‡	<b>Fittings:</b>
		CS93W4C Cord only (no plug), 16 gauge, 4 conductors, for use with EM battery, 6ft, white ‡	(blank) (2) Pre-drilled 7/8" holes with water tight plugs (both ends)
			PMP4X (1) Wet location fitting (top, L24 only), NEMA4X rated
			WLF (2) Wet location fittings (top) ‡
			WLFEND (1) Wet location fitting (one end) ‡
			WLFEND2 (2) Wet location fittings (both ends) ‡
			<b>Sensor Switch Embedded Controls: ‡</b>
			MSI6NWL 360° High mount sensor, (15-30' mounting heights), outdoor PIR, on/off occupancy, wet location (LINK)
			MSI6ZL3VWL 360° High mount sensor, (15-30' mounting heights), outdoor PIR, occupancy controlled dimming (bi-level), wet location (LINK)
			MSI10NWL 360° Low mount sensor, (8-15' mounting heights), outdoor PIR, on/off occupancy, wet location (LINK)
			MSI10ZL3VWL 360° Low mount sensor, (8-15' mounting heights), outdoor PIR, occupancy controlled dimming (bi-level), wet location (LINK)
			<b>nLight® Embedded Controls: ‡</b>
			NLTAIR2 RSBOR6 nLight® Air Generation 2 enabled, 360° high mount sensor, (15-30' heights) (LINK)
			NLTAIR2 RSBOR10 nLight® Air Generation 2 enabled, 360° low mount sensor, (8-15' heights) (LINK)

Accessories: Order as separate catalog number.			
EMWACT120	10' or 120" Y-Toggle Aircraft Cable (ships as pair)	HCMCFBH16YWL	Cord with Brad Mini Change® female connector, stainless steel coupling nut, 3 pole, 16 gauge, yellow, wet location, 6 feet, for use with the CS88R receptacle
EMWACT120SS	10' or 120" Stainless Steel Y-Toggle Aircraft Cable (ships as pair)	HCMRFBH16WL	Receptacle with Brad Mini Change® female connector, non-metallic coupling nut, 3 pole, 16 gauge leads, wet location, for use with CS88 and CS88L12 cordsets
EMWACT240	20' or 240" Y-Toggle Aircraft Cable (ships as pair)		
EMWACT240SS	20' or 240" Stainless Steel Y-Toggle Aircraft Cable (ships as pair)		
EMWEMK	Stainless steel end Mount Suspension Bracket w/ 1/2" NPT Wet Location Fittings (ships as pair)	HMHC36	3' or 36" Double Chain (ships as pair) ‡
EMWMHKB	Stainless Steel V-Hook and Brackets (ships as pair)	HMHC36SS	3' or 36" Stainless Steel Double Chain (ships as pair) ‡
EMWRMKSS	Stainless Steel Rigid Mount Bracket (ships as pair)	HMHHK120	10' or 120" Aircraft Cable w/ Hook (ships as pair, 2 pairs required to suspend fixture) ‡
EMWRMKZP	Zinc Rigid Mount Bracket (ships as pair)	HMHHK120SS	10' or 120" Stainless Steel Aircraft Cable w/ Hook (ships as pair, 2 pairs required to suspend fixture) ‡

# EMW LED High-Pressure Hose-Down, LED

Option Value Ordering Restrictions	
Option value	Restriction
CS6G16STOW5D	Not available with PMP4X, sensors, WLF or WLFEND2. <b>Not NEMA 4X rated.</b>
CS88, CS88L12, CS88R	Not available with PMP4X, WLF, WLFEND2. <b>Not NEMA 4X rated.</b>
CS89, CS89L12	Not available with PMP4X, WLF, WLFEND2. <b>Not NEMA 4X rated.</b>
CS93W4C	Only available with E10WLCP & FE14WCP. Not available with PMP4X, WLF, WLFEND2. <b>Not NEMA 4X rated.</b>
E10WLCP	Requires SPD option. Available with L24 9000LM or 12000LM and L48 1800LM or 24000LM 4ft only. Not available with HVOLT, 347V, 480V. Not available with 3 conductor cords or plugs.
EMK	Requires WLFEND2.
FE14WCP	Utilizes Fulham®, FHS2-UNV-56S emergency driver. Requires SPD option. Available with L24 9000LM or 12000LM and L48 18000LM or 24000LM only. Not available in HVOLT, 347V, 480V. Not available with 3 conductor cords or plugs.
HMHCH36, HMHCH36SS	For use with MHKB option.
HMHK120, HMHKK120SS	For use with EMK or MHKB options.
nLight Embedded Controls	Requires SPD option. Normal luminaires (non-emergency) can be used as a normal power sensing device for nearby nLight AIR devices and luminaires with EM emergency options. <b>Not NEMA 4X rated.</b>
RMKSS	Required for Surface Mounting.
RMKZP	Required for Surface Mounting.
Sensor Switch Embedded Controls	Requires SPD option. Not available in MVOLT or HVOLT. Must specify voltage.
WLF	In addition to top mounted fittings, includes (2) Pre-drilled 7/8" holes with water tight plugs (both ends). Not available with L24. <b>Not NEMA4X rated.</b>
WLFEND	<b>Not NEMA4X rated.</b>
WLFEND2	Not available with cordset or sensor options. <b>Not NEMA4X rated.</b>

## NUMBER OF BOARDS AND DRIVERS

Size	Lumen Package	Number of LED Boards	Drivers
L24	9000LM	1	1
	12000LM	1	1
	15000LM	2	1
	18000LM	2	1
	24000LM	4	1
L48	18000LM	2	1
	24000LM	4	1
	28000LM	4	1
	36000LM	6	2
	40000LM	6	2

## EMERGENCY LUMEN OUTPUT EXAMPLE – 10 WATT BATTERY

Approximate Luminaire Efficacy	Approximate Lumens at 1 Minute	Approximate Lumens at 45 Minutes	Approximate Lumens at 90 Minutes
<b>100 LPW</b>	1000	1000	1000
<b>110 LPW</b>	1100	1100	1100
<b>120 LPW</b>	1200	1200	1200
<b>130 LPW</b>	1300	1300	1300
<b>140 LPW</b>	1400	1400	1400
<b>150 LPW</b>	1500	1500	1500

## COMPARABLE LIGHT SOURCE

Length	Lumens	Light Source
L24	9000LM	2 lamp T5HO
	12000LM	4 lamp T8, 240W HID
	15000LM	4 lamp T5HO, 6 lamp T8
	18000LM	4 lamp T5HO, 6 lamp T8, 400W HID
	24000LM	6 lamp T5HO, 8 lamp T8
L48	18000LM	4 lamp T5HO, 6 lamp T8, 400W HID
	24000LM	6 lamp T5HO, 8 lamp T8
	28000LM	6 lamp T5HO, 8 lamp T8
	36000LM	8 lamp T5HO, 750W HID
	40000LM	9 lamp T5HO, 750W HID

## EMERGENCY LUMEN OUTPUT

**How to Estimate Delivered Lumens in Emergency Mode**

Use the formula below to estimate the delivered lumens in emergency mode

**Delivered Lumens = P x LPW**

P = Output power of emergency driver.

LPW = Lumen per watt rating of the luminaire. (See charts on Page 4)

The LPW rating is also available at [Designlight Consortium](#).

P = 10 watts for E10WLCP  
P = 14 watts for FE14WCP

## CSA LISTED AMBIENT RATING (-40°C minimum ambient unless noted)

Length	Lumens	Surface Mount	Suspended Mount (18" from surface)	w/ E10WLCP Battery	w/ FE14WCP Battery
L24	9000LM	45°C	55°C	5°C - 30°C	-20°C - 25°C
	12000LM	45°C	55°C	5°C - 30°C †	-20°C - 30°C †
	15000LM	35°C	50°C	NA	NA
	18000LM	35°C	45°C	NA	NA
	24000LM	25°C	35°C	NA	NA
L48	18000LM	25°C	50°C	5°C - 25°C	-20°C - 25°C
	24000LM	25°C	45°C	5°C - 30°C †	-20°C - 30°C †
	28000LM	25°C	35°C	NA	NA
	36000LM	25°C	40°C	NA	NA
	40000LM	25°C	40°C	NA	NA

Notes	
5°C - 30°C	Only available as suspended mount.
-20°C - 30°C	Only available as suspended mount.

# EMW LED High-Pressure Hose-Down, LED

## OPERATING CHARACTERISTICS

Length	Lumens	Diffuser ‡	Input Watts ‡	3000K		3500K		4000K		5000K		
				80CRI	90CRI	80CRI	90CRI	80CRI	90CRI	80CRI	90CRI	
L24	9000LM	ACL	59	9035	7429	9175	7600	9386	7572	9551	7987	Lumens
				153	126	156	129	159	128	162	135	LPW
		FST	59	8901	7319	9038	7487	9246	7459	9409	7868	Lumens
				151	124	153	127	157	126	159	133	LPW
		PCL	59	8983	7387	9123	7557	9333	7529	9497	7941	Lumens
				152	125	155	128	158	128	161	135	LPW
	12000LM	ACL	79	12389	10188	12581	10422	12871	10383	13098	10952	Lumens
				157	129	159	132	163	131	166	139	LPW
		FST	79	12205	10036	12394	10267	12679	10229	12903	10789	Lumens
				154	127	157	130	160	129	163	137	LPW
		PCL	79	12319	10130	12510	10362	12798	10324	13023	10890	Lumens
				156	128	158	131	162	131	165	138	LPW
	15000LM	ACL	98	15095	12413	15329	12698	15682	12651	15958	13344	Lumens
				154	127	156	130	160	129	163	136	LPW
		FST	98	14871	12228	15101	12509	15449	12463	15721	13146	Lumens
				152	125	154	128	158	127	160	134	LPW
		PCL	98	15010	12342	15242	12626	15593	12579	15868	13268	Lumens
				153	126	156	129	159	128	162	135	LPW
	18000LM	ACL	113	18023	14821	18302	15161	18724	15105	19054	15932	Lumens
				159	131	162	134	166	134	169	141	LPW
		FST	113	17755	14600	18030	14935	18445	14880	18770	15695	Lumens
				157	129	160	132	163	132	166	139	LPW
		PCL	113	17921	14736	18198	15074	18617	15019	18945	15841	Lumens
				159	130	161	133	165	133	168	140	LPW
24000LM	ACL	157	23736	19518	24104	19966	24659	19893	25093	20982	Lumens	
			151	124	154	127	157	127	160	134	LPW	
	FST	157	23383	19228	23745	19669	24292	19597	24720	20670	Lumens	
			149	122	151	125	155	125	157	132	LPW	
	PCL	157	23601	19407	23967	19853	24518	19779	24950	20863	Lumens	
			150	124	153	126	156	126	159	133	LPW	

Length	Lumens	Diffuser ‡	Input Watts ‡	3000K		3500K		4000K		5000K		
				80CRI	90CRI	80CRI	90CRI	80CRI	90CRI	80CRI	90CRI	
L48	18000LM	ACL	115	18301	15049	18585	15394	19012	15338	19347	16178	Lumens
				159	131	162	134	165	133	168	141	LPW
		FST	115	18150	14924	18431	15267	18855	15211	19187	16044	Lumens
				158	130	160	133	164	132	167	140	LPW
		PCL	115	18254	15011	18537	15355	18964	15299	19298	16137	Lumens
				159	131	161	134	165	133	168	140	LPW
	24000LM	ACL	149	24044	19771	24416	20225	24978	20150	25418	21254	Lumens
				161	133	164	136	168	135	171	143	LPW
		FST	149	23845	19607	24214	20057	24771	19983	25208	21078	Lumens
				160	132	163	135	166	134	169	141	LPW
		PCL	149	23982	19721	24354	20173	24914	20099	25353	21200	Lumens
				161	132	163	135	167	135	170	142	LPW
	28000LM	ACL	173	27737	22809	28167	23332	28815	23246	29323	24519	Lumens
				160	132	163	135	167	134	169	142	LPW
		FST	173	27507	22620	27934	23139	28576	23053	29080	24316	Lumens
				159	131	161	134	165	133	168	141	LPW
		PCL	173	27666	22750	28095	23272	28742	23187	29248	24457	Lumens
				160	132	162	135	166	134	169	141	LPW
	36000LM	ACL	230	36700	30178	37268	30871	38126	30757	38798	32442	Lumens
				160	131	162	134	166	134	169	141	LPW
		FST	230	36396	29928	36959	30615	37810	30502	38476	32173	Lumens
				158	130	161	133	164	133	167	140	LPW
		PCL	230	36606	30101	37173	30792	38029	30679	38699	32359	Lumens
				159	131	162	134	165	133	168	141	LPW
40000LM	ACL	254	39187	32224	39794	32963	40710	32842	41427	34641	Lumens	
			154	127	157	130	160	129	163	136	LPW	
	FST	254	38862	31957	39464	32690	40373	32570	41084	34353	Lumens	
			153	126	155	129	159	128	162	135	LPW	
	PCL	254	39087	32141	39692	32879	40606	32758	41322	34552	Lumens	
			154	127	156	129	160	129	163	136	LPW	

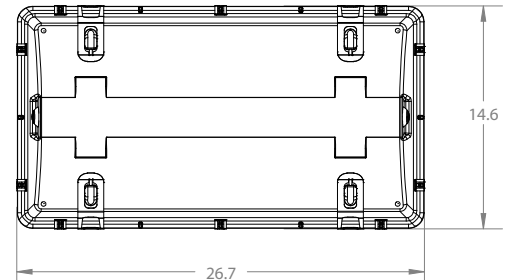
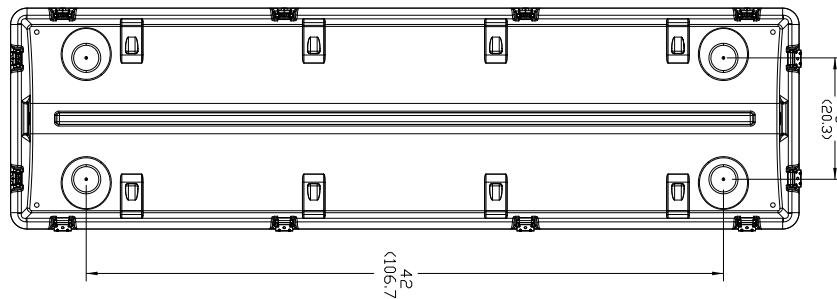
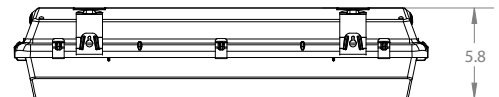
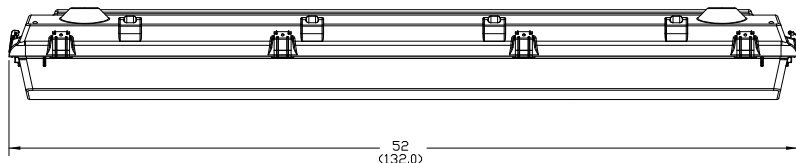
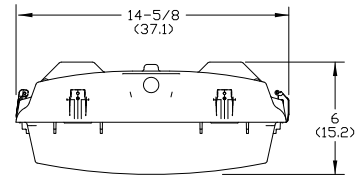
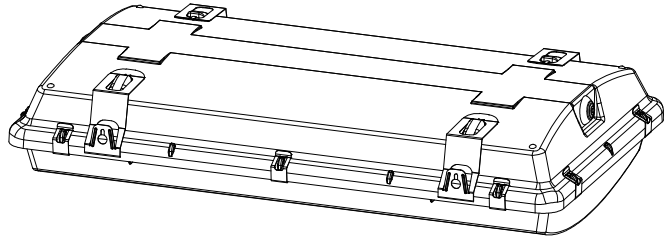
‡ Notes	
Input Watts	120 volts.
Lens	Medium distribution shown. Lumen output differences are minimal between 2 types. See the photometry report for more details, <a href="#">EMW product webpage</a> , see Photometry & Revit tab.
Operating Characteristics	Absolute photometry calculated in accordance with IESNA LM-79-08 @ 25°C.

# EMW LED High-Pressure Hose-Down, LED

## DIMENSIONS

Inches (centimeters). Subject to change without notice.

Length	Actual Length	Width	Height	Approximate weight	Fixtures per pallet	Approximate pallet dimensions (L x W x H)
L24	26.7in	14.625in	6in	18lbs.	20	63x16x9
L48	52in	14.625in	6in	35lbs.	10	63x16x9



## MOUNTING ACCESSORIES



**HMHHK120**  
(ships as a pair, 2 pairs required to suspend fixture)



**EMWACT120**  
10' Y-toggle aircraft cable  
**EMWACT240**  
20' Y-toggle aircraft cable



**EMWMHKB**  
Stainless steel V-hook and brackets



**EMWEMK**  
End mount suspension bracket, 304 stainless steel



**EMWRMKSS**  
Rigid mount bracket, 304 stainless steel  
**EMWRMKZP**  
Rigid mount bracket, zinc plated

## COMPONENTS & OPTIONS



CS88R Receptacle



CS88, CS88L12, CS88R,  
HCMRFBH16WL, HCMCFBH16YWL  
(actual product may vary depending on options chosen)



MSI or NLTAIR2 RSBOR Sensor