
Product datasheet

FC 40 W/830

LUMILUX T5 FC | Circular fluorescent lamps 16 mm, with 2GX13 base



Areas of application

- Public buildings
- Offices
- Restaurants
- Industry
- Shops
- Supermarkets and department stores
- Hotels

Product benefits

- Extremely economical
- Good quality of light
- Excellent luminous flux
- Excellent uniform illumination with no shadows
- Good average life (with OSRAM ECG)

Product features

- Good color rendering group: 1B (R_a : 80...89)
- Dimmable (from 100...1 % with QTi DALI/DIM ECG)
- Single-ended round fluorescent lamp
- Tube diameter: 16.0 mm



Product datasheet

Technical data

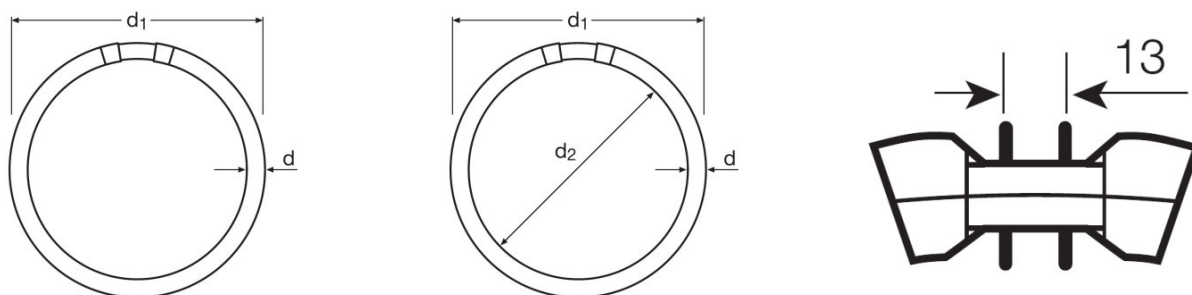
Electrical data

| | |
|-----------------|---------|
| Nominal wattage | 40.00 W |
| Rated wattage | 39.90 W |

Photometrical data

| | |
|--|--------------------|
| Rated lamp efficacy (standard condition) | 85 lm/W |
| Color rendering index Ra | ≥80 |
| Rated luminous flux | 3400 lm |
| Luminous flux at | 3400 lm |
| Light color | 830 |
| Rated color temperature | 3000 K |
| Nominal luminous flux | 3400 lm |
| Light color (designation) | LUMILUX Warm White |
| Rated LLMF at 2,000 h | 0.85 |
| Rated LLMF at 4,000 h | 0.83 |
| Rated LLMF at 6,000 h | 0.80 |
| Rated LLMF at 8,000 h | 0.80 |
| Rated LLMF at 12,000 h | 0.75 |

Dimensions & weight



| | |
|---|-----------|
| Tube diameter | 16 mm |
| Length | 305.0 mm |
| Length with base excl. base pins/connection | 300.00 mm |
| Diameter | 16.0 mm |
| Maximum diameter | 16.0 mm |

Temperatures & operating conditions

Product datasheet

| | |
|--|---------|
| Rated ambient temp.w.max.luminous flux | 35.0 °C |
|--|---------|

Lifespan

| | |
|--|-----------------------|
| Service life | 8000 h ¹⁾ |
| Lifespan | 12000 h ¹⁾ |
| Rated lamp survival factor at 2,000 h | 0.99 |
| Rated lamp survival factor at 4,000 h | 0.99 |
| Rated lamp survival factor at 6,000 h | 0.98 |
| Rated lamp survival factor at 8,000 h | 0.92 |
| Rated lamp survival factor at 12,000 h | 0.50 |
| Operation mode LLMF/LSF | HF |
| Rated lamp life time | 12000 h |

¹⁾ With preheat ECG

Additional product data

| | |
|-----------------------------------|---------------------------------|
| Base (standard designation) | 2GX13 |
| Mercury content | 3.8 mg |
| Product remark | Suitable for ECG operation only |
| Appropriate disposal acc. to WEEE | Yes |

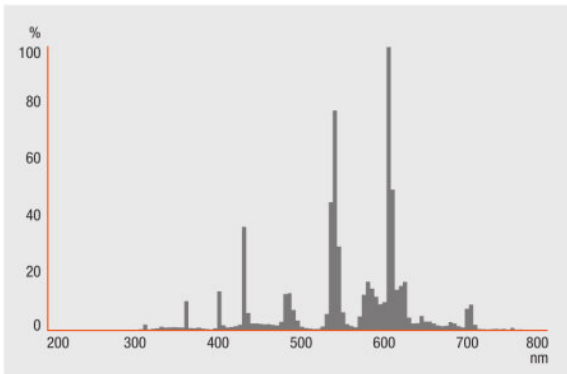
Capabilities

| | |
|---------------------|-----|
| Suitable for indoor | Yes |
|---------------------|-----|

Certificates & standards

| | |
|-------------------------|--------------|
| Energy efficiency class | A+ |
| Energy consumption | 44 kWh/1000h |

Light Distribution



Spectral power distribution

System guarantee

OSRAM System+ Guarantee in combination with OSRAM ECGs

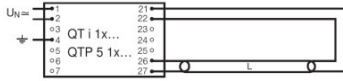
Equipment / Accessories

- Exclusively for operation on electronic control gears

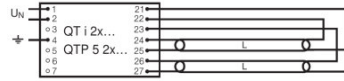
Safety advice

In case of lamp breakage: www.osram.com/brokenlamp

Product datasheet



Circuit diagram



Circuit diagram

Logistical Data

| Product code | Product description | Packaging unit (Pieces/Unit) | Dimensions (length x width x height) | Volume | Gross weight |
|---------------|---------------------|--|---|-----------------------|--------------|
| 4050300528540 | FC 40 W/830 | Shipping carton box 12 Pieces Folding carton box | 375 mm x 320 mm x 328 mm | 39.36 dm ³ | 2787.00 g |

The mentioned product code describes the smallest quantity unit which can be ordered. One shipping unit can contain one or more single products. When placing an order, for the quantity please enter single or multiples of a shipping unit.

References / Links

For more information on the system guarantee and the terms and conditions of the guarantee visit

- ▶ www.osram.com/system-guarantee

For more information on QUICKTRONIC electronic control gear go to

- ▶ www.osram.com/QUICKTRONIC

Disclaimer

Subject to change without notice. Errors and omission excepted. Always make sure to use the most recent release.

OSRAM GMBH is distribution partner
of LEDVANCE for Digital Lighting
Systems and Components

OSRAM

OSRAM GmbH
Marcel-Breuer-Strasse 6
80807 Munich, Germany

FC 40 W/830

LUMILUX T5 FC | Circular fluorescent lamps 16 mm, with 2GX13 base

| Product name | Product name ECG | EAN | Nominal current | Nominal wattage + Power loss | Luminous flux at 35 °C | Number of lighting outlets |
|--------------|--------------------------|---------------|-----------------|------------------------------|------------------------|----------------------------|
| FC 40 W/830 | QTi 1x14/24/21/39 GII | 4008321383334 | 0.19 A | 43.00 W | 3200 lm | 1 |
| | QTi 1x21/39 DIM | 4050300870564 | 0.18 A | 42.00 W | 3100 lm | 1 |
| | QTi 2x14/24/21/39 GII | 4008321383396 | 0.36 A | 88.00 W | 3200 lm | 2 |
| | QTi 2x21/39 DIM | 4050300870694 | 0.36 A | 82.00 W | 3100 lm | 2 |
| | QTi DALI 1x21/39 DIM | 4050300870366 | 0.18 A | 42.00 W | 3100 lm | 1 |
| | QTi DALI 2x21/39 DIM | 4050300870489 | 0.36 A | 82.00 W | 3100 lm | 2 |
| | QTi DALI-T/E 1x18-57 DIM | 4008321060808 | 0.20 A | 45.00 W | 3200 lm | 1 |
| | QTi DALI-T/E 2x18-42 DIM | 4008321060822 | 0.38 A | 87.00 W | 3200 lm | 2 |
| | QTi-T/E 1x18-57 DIM | 4008321060860 | 0.20 A | 45.00 W | 3200 lm | 1 |
| | QTi-T/E 2x18-42 DIM | 4008321060846 | 0.38 A | 87.00 W | 3200 lm | 2 |
| | QT-M 2x26-42/220-240 S | 4008321110022 | 0.36 A | 88.00 W | 3200 lm | 2 |
| | QTP-M 1x26-42 | 4008321329134 | 0.19 A | 43.00 W | 3200 lm | 1 |