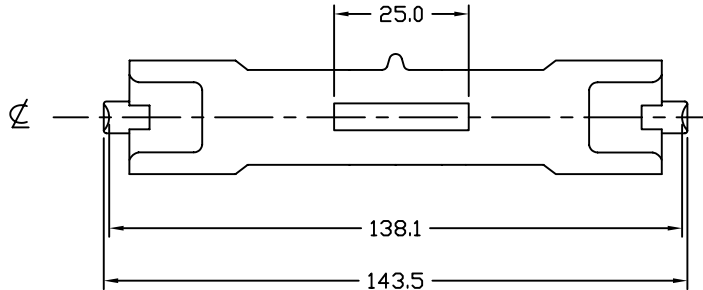
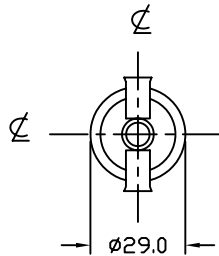


REVISIONS			
REV	DESCRIPTION	DATE	APPROVED



NOTES:

1. ALL DIMENSIONS ARE IN MM.
2. SEAL TEMP: SHOULD BE MAINTAINED BELOW 350°C
3. THE DIMENSIONS AND SPECIFICATIONS OF PRODUCT LISTED IN THIS SHEET ARE SUBJECT TO CHANGE WITHOUT NOTICE FOR IMPROVEMENT.

CHARACTERISTICS	
VOLTAGE	120 V
WATTAGE	2000 W
COLOR TEMP.	3200 K
TOTAL LUMEN	57000 Lm
BASE TYPE	R7s-18
AVERAGE LIFE	400 HRS
FILAMENT TYPE	CC-8
BURN POSITION	Any

NEXT ASSY	USED ON

ITEM	QTY	DESCRIPTION	CODE IDENT	PART NUMBER	REMARKS
<b>LIST OF MATERIALS</b>					
UNLESS OTHERWISE SPECIFIED DIMENSIONS ARE IN INCHES DECIMALS .X ± - .XX ± - .XXX ± - ANGLES ± - DRILLED HOLES PER AND 10387 REMOVE BURRS AND SHARP EDGES ALL DIMENSIONS AFTER PLATING		CONTRACT NO.		<b>USHIO AMERICA, INC.</b> 5440 Cerritos Avenue Cypress, CA 90630	
MATERIAL <b>COMPOSITE</b>		APPROVALS			
FINISH		DATE		TITLE <b>FEY</b> <b>JPD120V-2000WC</b>	
		DRAWN <b>R.AMPARO</b> 12/20/99			
		CHKD <b>D.GILCZYNSKI</b> 12/20/99		SIZE <b>B</b> CODE IDENT NO. <b>FEY</b> DWG NO. <b>1000516</b>	
		ENGR		SCALE <b>NONE</b> WEIGHT SHEET <b>1 OF 1</b>	
		MFG			
		QUAL			
		DSGN ACTVY			
		GOVT ACTVY			