

FL2103 FL2105 FL2106



Vanity

Features

Housing

Die-formed Cold-rolled Steel
 Finish Option: -62 Satin Nickel -06 White -30 Oil Rubbed Bronze

Optical

Shade: High Transmission Acrylic Create Excellent Light Distribution and Uniformity
 LED: High Efficiency, High CRI, Binned and Mixed to Reach Uniform Light.

Electrical

High Power Factor, Low THD

Lamp

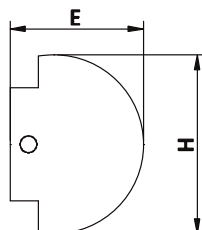
LED Type: Built-in (Color Temperature Option – 3500K, 5000K)
 Fluorescent Type: T8 Lamp

Certification

UL/cUL, ETL/cETL Listed, , Suitable for Damp Locations
 Energy Star

Warranty

5 Years Warranty on Driver and LED Module



LED Type

Model	Input Voltage	Input Wattage	LED CT / CRI	Lumen (TYP)	Finish	Shade	Dimension (L X H X E)	Energy Star
FL2103D-3000K	120V ~ 277V	23W	3000K / 80	1785	Satin Nickel	High Light Transmission Acrylic	24.5" x 5.7" x 4.5"	Yes
FL2103D-4000K	120V ~ 277V	23W	4000K / 80	1850	Satin Nickel		24.5" x 5.7" x 4.5"	Yes
FL2105D-3000K	120V ~ 277V	34W	3000K / 80	2910	Satin Nickel		36.5" x 5.7" x 4.5"	Yes
FL2105D-4000K	120V ~ 277V	34W	4000K / 80	3000	Satin Nickel		36.5" x 5.7" x 4.5"	Yes
FL2106D-3000K	120V ~ 277V	48W	3000K / 80	3420	Satin Nickel		48.5" x 5.7" x 4.5"	Yes
FL2106D-4000K	120V ~ 277V	48W	4000K / 80	3520	Satin Nickel		48.5" x 5.7" x 4.5"	Yes

CFL Type

Model	Input Voltage	Input Wattage	Finish /Shade	Lamp	Dimension (L X W X H)
FL2103-62	120V	34W	Satin Nickel / Acrylic	2 x F17T8, 17W	24.5" x 5.7" x 4.5"
FL2103-30	120V	34W	Oil Rubbed Bronze / Acrylic	2 x F17T8, 17W	24.5" x 5.7" x 4.5"
FL2105-62	120V	50W	Satin Nickel / Acrylic	2 x F25T8, 25W	36.5" x 5.7" x 4.5"
FL2105-30	120V	50W	Oil Rubbed Bronze / Acrylic	2 x F25T8, 25W	36.5" x 5.7" x 4.5"
FL2106-62	120V	56W	Satin Nickel / Acrylic	2 x F32T8, 32W	48.5" x 5.7" x 4.5"
FL2106-30	120V	56W	Oil Rubbed Bronze / Acrylic	2 x F32T8, 32W	48.5" x 5.7" x 4.5"
FL2103-217 HPF	120V ~ 277V	34W	Satin Nickel / Acrylic	2 x F17T8, 17W	24.5" x 5.7" x 4.5"
FL2105-225 HPF	120V ~ 277V	50W	Satin Nickel / Acrylic	2 x F25T8, 25W	36.5" x 5.7" x 4.5"
FL2106-232 HPF	120V ~ 277V	56W	Satin Nickel / Acrylic	2 x F32T8, 32W	48.5" x 5.7" x 4.5"