

LED signage lighting systems  
**Cabinet Signs**

## **LineFit Light**



**current**  
powered by GE

# The **fast** and simple retrofit for cabinet signs

## Rapid Retrofit

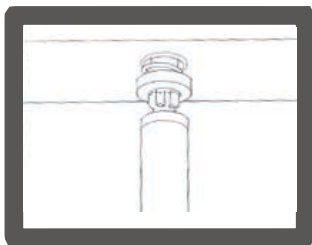
The new **LineFit Light** LED system is the incredibly quick and easy way to transform a fluorescent cabinet sign into an **efficient** LED solution. In four easy steps, taking just minutes per fixture, you get all the lighting performance, energy savings and reduced maintenance benefits of GE LED technology. Now, the old R17d fluorescent sockets hold the new **LineFit Light** LED in place with rotating end caps—to ensure the light is perfectly directed to both sides of the sign face.

Since the **GE Tetra**® 24-volt Power Supply is rated a Class 2 device, there is no need to run the output (DC) wiring in any raceways or conduit, further reducing installation costs. You get all the LED advantages of bright signs, longer life, energy efficiency, lower maintenance and cold weather performance in one durable, money-saving system.



## Quick & Easy

It's the easiest cabinet retrofit ever—just four simple steps. Imagine the labor savings potential on every sign



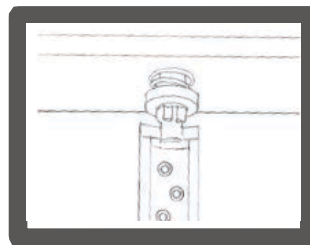
### Step 1

Remove old ballast and lamps



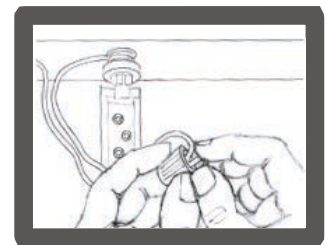
### Step 2

Install Tetra 24-volt power supply



### Step 3

Use existing R17d sockets to hold new LED light bars



### Step 4

Connect wires to LED bars and back to power supply

# Eliminate shadowing from internal poles & brackets

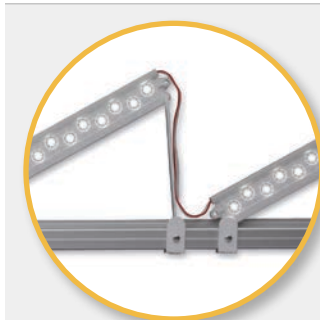
The new **LineFit Light F12 system** solves the shadowing problem internal structural elements can cause. Now the poles, brackets and sag rods found in larger signs don't cause unattractive shadowing on the sign face. The **LineFit Light F12 modules** install quickly and easily (with GE mounting accessories) to create customized installation solutions that carefully aim light on the sign face—where it belongs. Tetra Rail (GEDSRL08), Tetra Angle Mounting Clip & Rod (GEDSARC1) and custom **LineFit Light End Cap** (GEDSREC1) provide the options you need to easily achieve outstanding, even illumination. **LineFit Light F12 modules** are available in 3 CCTs: Daylight, Sign White and Cool White.



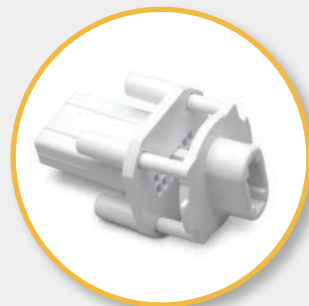
**GE EXCLUSIVE:**  
no other supplier offers a similar solution.

## Accessories

SKU	Description	Package Quantity
GEDSRL08	Tetra Mounting Rail	8 Rails ( each rail = 96 inches ( 2438 mm)
GEDSARC1	Tetra Angle Mounting Clip and Extender Rod	20 Clips/ 10 Angle Rods
GEDSREC1	LineFit Light End Cap	8/ bag
32619	LFL-LED Coupler 2	6 Sets per Box (12 couplers)
93020091	LFL-LED Sockets	6 Sets per Box (12 sockets)



**Tetra Angle Mounting  
Clip & Extender Rod**



**LineFit Light  
End Cap**



**LFL-LED  
Coupler 2**



**LFL-LED  
Sockets**

# Technical Specifications

Specification Item	Description	Long Description	LFL HO Replacement	Color Temp (K)	Brightness Lumens/Lightbar	Qty.	Energy Consumption Watts (Lightbar)	Energy Consumption Watts (System / Lightbar)	Viewing Angle single side view angle
93019966 32499 32552	GEF12DHOLED-1 GEF12SGNHOLED-1 GEF12CWHOLED-1	GE 12" Daylight LED Lamp GE 12" Sign White LED Lamp GE 12" Cool White LED Lamp	F12 Daylight F12 Sign White F12 Cool White	6500K 5400K 4100K	735 735 687	32/Box	5.8	6.82	140°
93020092 32500 32553	GEF18DHOLED-1 GEF18SGNHOLED-1 GEF18CWHOLED-1	GE 18" Daylight LED Lamp GE 18" Sign White LED Lamp GE 18" Cool White LED Lamp	F18 Daylight F18 Sign White F18 Cool White	6500K 5400K 4100K	893 893 834	6/Box	8.6	10.1	140°
93020093 32501 32554	GEF24DHOLED-1 GEF24SGNHOLED-1 GEF24CWHOLED-1	GE 24" Daylight LED Lamp GE 24" Sign White LED Lamp GE 24" Cool White LED Lamp	F24 Daylight F24 Sign White F24 Cool White	6500K 5400K 4100K	1470 1470 1374	6/Box	11.5	13.5	140°
93020094 32502 32557	GEF30DHOLED-1 GEF30SGNHOLED-1 GEF30CWHOLED-1	GE 30" Daylight LED Lamp GE 30" Sign White LED Lamp GE 30" Cool White LED Lamp	F30 Daylight F30 Sign White F30 Cool White	6500K 5400K 4100K	1786 1786 1668	6/Box	14.4	16.9	140°
93020095 32504 32560	GEF36DHOLED-1 GEF36SGNHOLED-1 GEF36CWHOLED-1	GE 36" Daylight LED Lamp GE 36" Sign White LED Lamp GE 36" Cool White LED Lamp	F36 Daylight F36 Sign White F36 Cool White	6500K 5400K 4100K	2205 2205 2061	6/Box	17.3	20.4	140°
93020096 32505 32572	GEF42DHOLED-1 GEF42SGNHOLED-1 GEF42CWHOLED-1	GE 42" Daylight LED Lamp GE 42" Sign White LED Lamp GE 42" Cool White LED Lamp	F42 Daylight F42 Sign White F42 Cool White	6500K 5400K 4100K	2521 2521 2355	6/Box	20.2	23.8	140°
93020097 32511 93019970	GEF48DHOLED-1 GEF48SGNHOLED-1 GEF48CWHOLED-1	GE 48" Daylight LED Lamp GE 48" Sign White LED Lamp GE 48" Cool White LED Lamp	F48 Daylight F48 Sign White F48 Cool White	6500K 5400K 4100K	2940 2940 2748	6/Box	23.0	27.1	140°
93020098 32513 32574	GEF60DHOLED-1 GEF60SGNHOLED-1 GEF60CWHOLED-1	GE 60" Daylight LED Lamp GE 60" Sign White LED Lamp GE 60" Cool White LED Lamp	F60 Daylight F60 Sign White F60 Cool White	6500K 5400K 4100K	3675 3675 3435	6/Box	28.8	33.9	140°
93020099 32515 32579	GEF64DHOLED-1 GEF64SGNHOLED-1 GEF64CWHOLED-1	GE 64" Daylight LED Lamp GE 64" Sign White LED Lamp GE 64" Cool White LED Lamp	F64 Daylight F64 Sign White F64 Cool White	6500K 5400K 4100K	3833 3833 3582	6/Box	31.7	37.9	140°
93019967 32516 32587	GEF72DHOLED-1 GEF72SGNHOLED-1 GEF72CWHOLED-1	GE 72" Daylight LED Lamp GE 72" Sign White LED Lamp GE 72" Cool White LED Lamp	F72 Daylight F72 Sign White F72 Cool White	6500K 5400K 4100K	4410 4410 4122	6/Box	34.6	40.7	140°
93019968 32517 32588	GEF84DHOLED-1 GEF84SGNHOLED-1 GEF84CWHOLED-1	GE 84" Daylight LED Lamp GE 84" Sign White LED Lamp GE 84" Cool White LED Lamp	F84 Daylight F84 Sign White F84 Cool White	6500K 5400K 4100K	5145 5145 4809	6/Box	40.3	47.4	140°
93019969 94469 32518	GEF96DHOLED-1 GEF96SGNHOLED-1 GEF96CWHOLED-1	GE 96" Daylight LED Lamp GE 96" Sign White LED Lamp GE 96" Cool White LED Lamp	F96 Daylight F96 Sign White F96 Cool White	6500K 5400K 4100K	5880 5880 5496	6/Box	46.1	54.2	140°

# Technical Specifications

Specification Item	LineFit Light																														
Cutting Resolution	Cut on wire between every module																														
Power Supply	GEPS24-25-NA Input: 100-305VAC; Output: 24VDC GEPS24D-80U Input: 90-305VAC; Output: 24VDC GEPS24-100U Input: 108-305VAC; Output: 24VDC GEPS24-180U Input: 90-305VAC; Output: 24VDC GEPS24-300U Input: 108-305VAC; Output: 24VDC																														
Maximum Supply Wire Limits	<table border="1"> <thead> <tr> <th></th> <th>18 AWG/0.82 mm<sup>2</sup> Supply Wire</th> <th>16 AWG/1.31 mm<sup>2</sup> Supply Wire</th> <th>14 AWG/2.08 mm<sup>2</sup> Supply Wire</th> <th>12 AWG/3.31 mm<sup>2</sup> Supply Wire</th> </tr> </thead> <tbody> <tr> <td>25W Power Supply</td> <td>120 ft./36.6 m</td> <td>-</td> <td>-</td> <td>-</td> </tr> <tr> <td>80W Power Supply</td> <td>20 ft./6.1 m</td> <td>25 ft./7.6 m</td> <td>35 ft./10.6 m</td> <td>40 ft./12.1 m</td> </tr> <tr> <td>100W Power Supply</td> <td>20 ft./6.1 m</td> <td>25 ft./7.6 m</td> <td>35 ft./10.6 m</td> <td>40 ft./12.1 m</td> </tr> <tr> <td>180W Power Supply</td> <td>20 ft./6.1 m</td> <td>25 ft./7.6 m</td> <td>35 ft./10.6 m</td> <td>40 ft./12.1 m</td> </tr> <tr> <td>300W Power Supply</td> <td>20 ft./6.1 m</td> <td>25 ft./7.6 m</td> <td>35 ft./10.6 m</td> <td>40 ft./12.1 m</td> </tr> </tbody> </table>		18 AWG/0.82 mm <sup>2</sup> Supply Wire	16 AWG/1.31 mm <sup>2</sup> Supply Wire	14 AWG/2.08 mm <sup>2</sup> Supply Wire	12 AWG/3.31 mm <sup>2</sup> Supply Wire	25W Power Supply	120 ft./36.6 m	-	-	-	80W Power Supply	20 ft./6.1 m	25 ft./7.6 m	35 ft./10.6 m	40 ft./12.1 m	100W Power Supply	20 ft./6.1 m	25 ft./7.6 m	35 ft./10.6 m	40 ft./12.1 m	180W Power Supply	20 ft./6.1 m	25 ft./7.6 m	35 ft./10.6 m	40 ft./12.1 m	300W Power Supply	20 ft./6.1 m	25 ft./7.6 m	35 ft./10.6 m	40 ft./12.1 m
		18 AWG/0.82 mm <sup>2</sup> Supply Wire	16 AWG/1.31 mm <sup>2</sup> Supply Wire	14 AWG/2.08 mm <sup>2</sup> Supply Wire	12 AWG/3.31 mm <sup>2</sup> Supply Wire																										
	25W Power Supply	120 ft./36.6 m	-	-	-																										
	80W Power Supply	20 ft./6.1 m	25 ft./7.6 m	35 ft./10.6 m	40 ft./12.1 m																										
	100W Power Supply	20 ft./6.1 m	25 ft./7.6 m	35 ft./10.6 m	40 ft./12.1 m																										
180W Power Supply	20 ft./6.1 m	25 ft./7.6 m	35 ft./10.6 m	40 ft./12.1 m																											
300W Power Supply	20 ft./6.1 m	25 ft./7.6 m	35 ft./10.6 m	40 ft./12.1 m																											
	Wiring to be installed in accordance with Article 725 of the National Electric code (NEC).																														
Operating Environment	-40 °C to +60 °C																														
Module Dimensions (h x l x w)mm	0.35 x 10.4 x 1.3 in (9 x 265 x 33mm)																														
Warranty	GE offers a limited system warranty of up to five (5) years																														
System Certifications	UL Recognized (C-US) #E219167, UL Classified (C-US) #E229508, CE, ROHS for dry or damp location.																														



GE and the GE Monogram are trademarks of the General Electric Company and are used under license. Information provided is subject to change without notice. All values are design or typical values when measured under laboratory conditions, and GE makes no warranty or guarantee, express or implied, that such performance will be obtained under end-use conditions. © 2019 Current, powered by GE  
www.currentbyge.com | SIGN 149 (Rev 03/01/19)

