

## HCI-TT 150 W/942 NDL PB

POWERBALL HCI-TT | Metal halide lamps with ceramic technology for enclosed luminaires



### Areas of application

- Streets
- Outdoor lighting
- Industrial installations
- Exhibition halls and trade fairs
- Approved only for use in enclosed luminaires
- Outdoor applications only in suitable luminaires

### Product benefits

- Very long lifetime
- High luminous efficacy
- Good color rendering
- Operation in existing HPS installations as ignition voltage of IEC 60662 is met
- Energy savings of up to 70 % when replacing mercury vapor lamps (HQL)
- Optimum energy efficiency on POWERTRONIC PTo 3DIM ECGs
- UV values significantly below the maximum permitted thresholds to IEC 61167 thanks to UV filter

### Product features

- White light due to POWERBALL ceramic technology
- Light color: neutral white (NDL)
- Lamp survival factor: 95 % after 12,000 h burning time
- Dimmable on conventional control gears and electronic control gears



# Product datasheet

## Technical data

### Electrical data

Nominal wattage	150.00 W
Rated wattage	146.00 W
Lamp current	1.8 A
PFC capacitor at 50 Hz	20 $\mu$ F <sup>1)</sup>
Nominal voltage	100 V
Ignition voltage	3.3 / 5.0 kVp <sup>2)</sup>
Rated lamp efficacy (standard condition)	107 lm/W

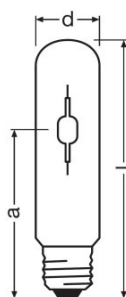
<sup>1)</sup> At rated voltage and  $\cos \varphi \geq 0.9$

<sup>2)</sup> Minimum / Maximum

### Photometrical data

Rated luminous flux	15600 lm
Color rendering index Ra	$\geq 90$
Color temperature	4090 K
Light color	942
Rated LLMF at 2,000 h	0.91
Rated LLMF at 4,000 h	0.83
Rated LLMF at 6,000 h	0.78
Rated LLMF at 8,000 h	0.70
Rated LLMF at 12,000 h	0.60
Rated LLMF at 16,000 h	0.55
Rated LLMF at 20,000 h	0.50
UV protection	Yes

### Dimensions & weight



Diameter	47.0 mm
----------	---------

## Product datasheet

Length	210.0 mm
Light center length (LCL)	132.0 mm
Product weight	130.00 g

### Temperatures & operating conditions

Maximum permitted outer bulb temperature	450 °C
Maximum permitted base edge temperature	210 °C

### Lifespan

Rated lamp survival factor at 2,000 h	0.99
Rated lamp survival factor at 4,000 h	0.99
Rated lamp survival factor at 6,000 h	0.98
Rated lamp survival factor at 8,000 h	0.97
Rated lamp survival factor at 12,000 h	0.95
Rated lamp survival factor at 16,000 h	0.80
Rated lamp survival factor at 20,000 h	0.40
Lifespan B50	18000 h
Lifespan B10	14000 h
Lifespan B5	12000 h
Operation mode LLMF/LSF	50 Hz

### Additional product data

Base (standard designation)	E40
Design / version	Clear
System guarantee level	3 (2/5)
Mercury content	18.7 mg <sup>1)</sup>

<sup>1)</sup> Maximum

### Capabilities

Dimmable	Yes <sup>1)</sup>
Burning position	Any
Enclosed luminaire required	Yes

<sup>1)</sup> In combination with POWERTRONIC PTo

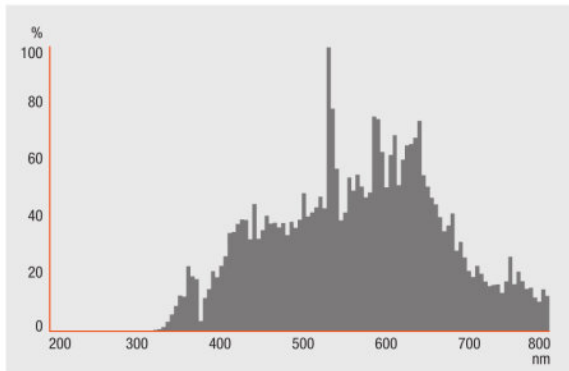
### Certificates & standards

Energy efficiency class	A+
Energy consumption	161 kWh/1000h

### Country specific categorizations

## Light Distribution

---



---

Spectral power distribution

---

## System guarantee

For the vast majority of our lamps we are offering an extended system guarantee in conjunction with OSRAM POWERTRONIC control gear.



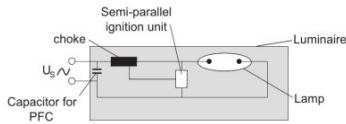
---

Guarantee

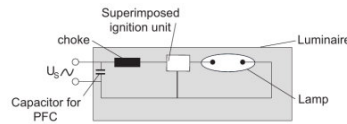
## Product datasheet

### Safety advice

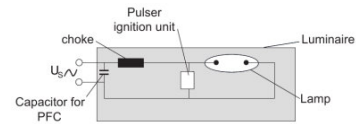
Where possible, use a timer igniter (switch-off time of at least 15 minutes). Otherwise, switch off the luminaire for at least 15 minutes if a brief interruption has occurred to the mains voltage supply.



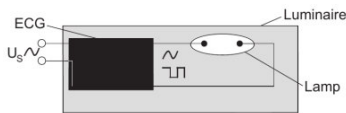
Circuit diagram



Circuit diagram



Circuit diagram



Circuit diagram

### Logistical Data

Product code	Product description	Packaging unit (Pieces/Unit)	Dimensions (length x width x height)	Volume	Gross weight
4008321689016	HCI-TT 150 W/942 NDL PB	Shipping carton box 12 Pieces Sleeves	277 mm x 288 mm x 217 mm	17.31 dm <sup>3</sup>	2262.00 g

The mentioned product code describes the smallest quantity unit which can be ordered. One shipping unit can contain one or more single products. When placing an order, for the quantity please enter single or multiples of a shipping unit.

### References / Links

## Product datasheet

For more information on the system guarantee and the terms and conditions of the guarantee visit

▶ [www.osram.com/system-guarantee](http://www.osram.com/system-guarantee)

---

### Disclaimer

Subject to change without notice. Errors and omission excepted. Always make sure to use the most recent release.

## HCI-TT 150 W/942 NDL PB

POWERBALL HCI-TT | Metal halide lamps with ceramic technology for enclosed luminaires

Product name	Product name ECG	EAN
HCI-TT 150 W/942 NDL PB	PTo 150/220-240 3DIM	4008321956385