



HF-Matchbox Blue

HF-M BLUE 124 SH TL/TL5/PL-L 230-240V

HF-Matchbox Blue is an affordable, reliable, compact, lightweight and high-frequency ballast for use with system wattages below 25 W in combination with TL mini, TL-D, TL5 and TL5c, PL-T/C, and PL-L/S lamps.;The HF-M Blue range has a robust design, meets all relevant international safety and performance standards and has an energy efficiency index (CELMA EEI) of A2. The ballast is primarily designed for Indoor application. For outdoor application, the luminaire should be minimum Classland need to be sufficiently protected against water & dust. The installation should also be guard against any lightening surge or any other necessary electrical protection as deemed in such typical installation & application.

Product data

| General information | |
|--|--------------|
| Application Code | mk1 |
| Lamp Type | TL/TL5/PL-L |
| Number of Lamps | 1 piece/unit |
| Number of Products on MCB (16A Type B) (Nom) | 60 |
| Automatic Restart | Yes |
| Operating and electrical | |
| Input Voltage | 230 to 240 V |
| Input Frequency | 50 to 60 Hz |
| Power Factor 100% Load (Nom) | 0.64 |
| Ignition Time (Max) | 0.5 s |
| Mains Voltage Performance (AC) | -8%~+6% |
| Mains Voltage Safety (AC) | -10%~+10% |
| Power Losses (Nom) | 1.9-2.2 W |
| Efficiency at full load [%] | 85.5 % |

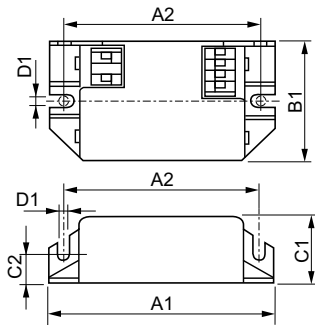
| Wiring | |
|----------------------------------|---------------------------|
| Connector Type Input Terminals | Insert |
| Color Input Terminals | Orange |
| Color Output Terminals | Grey |
| Connector Type Output Terminals | Insert |
| Cable Length From Device to Lamp | 1.50 m |
| Cable Length Hot Wiring | 0.30 m |
| Wire Striplength | 8.0-9.0 mm |
| Input Terminal Cross Section | 0.50-1.50 mm ² |
| Output Terminal Cross Section | 0.50-1.50 mm ² |
| System characteristics | |
| Rated Ballast-Lamp Power | 24 W |
| Temperature | |
| T-Ambient (Max) | 40 °C |
| T-Ambient (Min) | -10 °C |

HF-Matchbox Blue

| | |
|---------------------------------|---|
| T-Case Maximum (Max) | 75 °C |
| Mechanical and housing | |
| Housing | SH |
| Emergency operation | |
| Battery Voltage Lamp Ignition | 194-254 V |
| Approval and application | |
| IP Classification | IP 20 [Ingress Protection 20] |
| Approval Marks | F-Marking CE marking VDE certificate CB Certificate |

| | |
|---------------------------------|--|
| Product data | |
| Full product code | 871150053638930 |
| Order product name | HF-M BLUE 124 SH TL/TL5/PL-L 230-240V |
| EAN/UPC - Product | 8711500536389 |
| Order code | 913700417966 |
| Numerator - Quantity Per Pack | 1 |
| Numerator - Packs per outer box | 50 |
| Material Nr. (12NC) | 913700417966 |
| Net Weight (Piece) | 0.040 kg |

Dimensional drawing



HF-M BLUE 124 SH TL/TL5/PL-L 230-240V

Product

HF-M BLUE 124 SH TL/TL5/PL-L 230-240V

