

## HQI-T 1000 W/N

POWERSTAR HQI-T 1000...2000 W | Metal halide lamps for enclosed luminaires



### Areas of application

- Factories and workshops
- Sports halls and multi-purpose halls
- Industrial installations
- Airports
- Docks and port facilities
- Marshaling yards, container transshipment facilities
- Approved only for use in enclosed luminaires
- Outdoor applications only in suitable luminaires

### Product benefits

- Output of up to 2,000 W
- High efficiency
- E40 screw base for simple lamp handling
- Long life time
- UV values significantly below the maximum permitted thresholds to IEC 61167 thanks to UV filter

### Product features

- POWERSTAR quartz technology
- Light colors: neutral white (N), daylight (D)



Technical data

Electrical data

Nominal wattage	1000.00 W
Nominal voltage	130 V
Lamp current	9.00000 A
PFC capacitor at 50 Hz	85 $\mu$ F <sup>1)</sup>
Ignition voltage	4.0 / 5.0 kVp <sup>2)</sup>
Rated wattage	1050.00 W
Rated lamp efficacy (standard condition)	104 lm/W
Energy consumption	1161 kWh/1000h

<sup>1)</sup> At rated voltage and  $\cos \phi \geq 0.9$

<sup>2)</sup> Minimum / Maximum

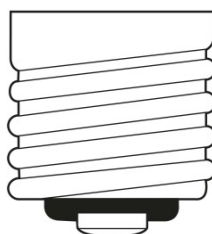
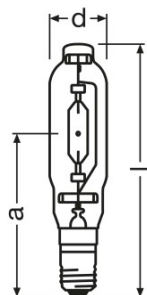
Photometrical data

Luminous flux	110000 lm
Rated luminous flux	110000 lm
Color rendering index Ra	64
Color temperature	3350 K
Light color	630
Rated LLMF at 2,000 h	0.91
Rated LLMF at 4,000 h	0.86
Rated LLMF at 6,000 h	0.82
Rated LLMF at 8,000 h	0.78
Rated LLMF at 12,000 h	0.70

Light technical data

UV protection	Yes
---------------	-----

Dimensions & weight



E40  
IEC 7004-24  
DIN 49625

## Product datasheet

Diameter	76.0 mm
Length	345.0 mm
Light center length (LCL)	220.0 mm

### Colors & materials

Lamp mercury content	110.0 mg
----------------------	----------

### Temperatures

Maximum permitted outer bulb temperature	500 °C
Maximum permitted base edge temperature	250 °C

### Lifespan

Rated lamp survival factor at 2,000 h	0.99
Rated lamp survival factor at 4,000 h	0.95
Rated lamp survival factor at 6,000 h	0.83
Rated lamp survival factor at 8,000 h	0.62
Rated lamp survival factor at 12,000 h	0.16
Lifespan B50	9000 h

### Additional product data

Base (standard designation)	E40
Design / version	Clear

### Capabilities

Burning position	p30
Enclosed luminaire required	Yes

### Certificates & standards

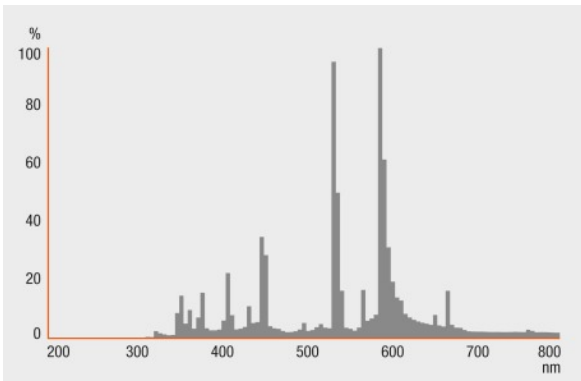
Energy efficiency class	A+
-------------------------	----

### Country specific categorizations

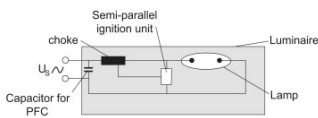
ILCOS	MT/UB-1000/635-H/E/SL-E40-76/345/H
-------	------------------------------------

### Light Distribution

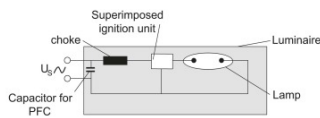
# Product datasheet



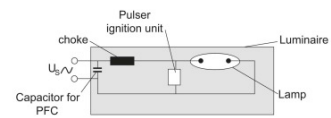
## Spectral power distribution



Circuit diagram



Circuit diagram



Circuit diagram

## Logistical Data

Product code	Product description	Packaging unit (Pieces/Unit)	Dimensions (height x width x length)	Volume	Gross weight
4008321528292	HQI-T 1000 W/N	Shipping carton box 6	300 mm x 210 mm x 440 mm	27.72 dm <sup>3</sup>	3514.00 g

The mentioned product code describes the smallest quantity unit which can be ordered. One shipping unit can contain one or more single products. When placing an order, for the quantity please enter single or multiples of a shipping unit.

## Disclaimer

## Product datasheet

Subject to change without notice. Errors and omission excepted. Always make sure to use the most recent release.