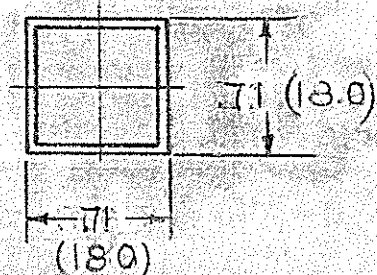
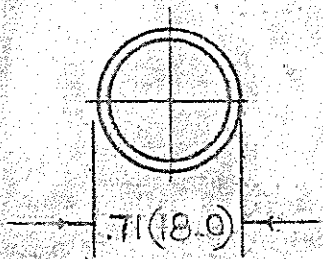
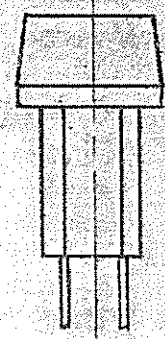
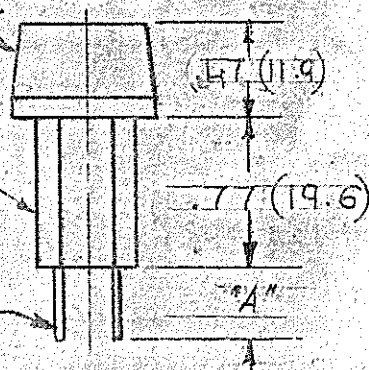


DET NO	SOCKET NO	TERMINAL SIZE	DIM "A"
1	3040	.205 (5.21) WIDE	.28 (7.1)
2	3043	.187 (4.75) WIDE	.28 (7.1)

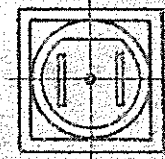
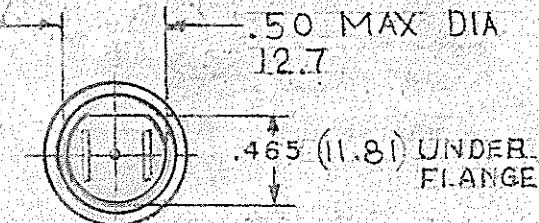


LENS, POLYCARBONATE
(SEE TABLE)

SOCKET,
BLACK NYLON



TERMINALS, NICKEL
PLATED BRASS.
(SEE TABLE
FOR WIDTH)



3040 SERIES - ROUND LENS

3040 SERIES - SQUARE LENS

ROUND LENS#	LENS COLOR	SQUARE LENS#
3111	RED	3121
3112	CLEAR	3122
3113	AMBER	3123
3114	WHITE	3124
3115	GREEN	3125
3116	BLUE	3126
3117	YELLOW	3127

NOTES:

- FOR USE WITH "INDICATOR" SLIDE BASE LAMPS (TYPE ESB)
- PUSH ON SPEED NUT PART # SN0461 SUPPLIED

DIMENSION	UNLESS OTHERWISE SPECIFIED TOLERANCES ARE:
INCHES	FRACTIONAL ± .015, 2 PLACE DECIMAL ± .010, 3 PLACE DECIMAL ± .005
(MILLIMETERS)	(1 PLACE DECIMAL ± .3MM, 2 PLACE DECIMAL ± .13MM) ANGULAR ± 1/2°

DIST.
C

BRUNING 40-105 33679

REVISIONS

A

ECN 1393

REDRAWN &

CORRECTED NOTES
4-27-79

MODEL 3040 SERIES
PILOT LIGHTS



INDUSTRIAL DEVICES, INC.
EDGEWATER, NEW JERSEY

DRAWN BY M.G.

CHECKED BY

DATE 4-27-79

SCALE 1:1

A-4702

Mouser Electronics

Authorized Distributor

Click to View Pricing, Inventory, Delivery & Lifecycle Information:

VCC:

3040