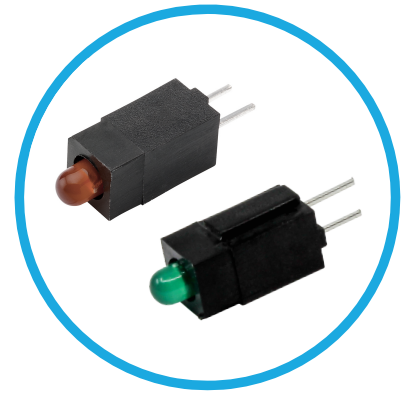




6321 Series T-1 Circuit Board Indicator



T-1 LED block mounting design assures height and side-by-side spacing alignment saves assembly costs

Key Features

- T-1 LED block mounting design assures height and side-by-side spacing alignment saves assembly costs.
- Blocks have interlock feature which allows for multi LED arrays (6321A Interlocks)
- Black plastic mounting block provides high contrast ratio.
- High Brite and Super Brite light output.
- Standoffs prevent flux entrapment.
- Meets UL 94V-0 and Bellcore flammability specifications.

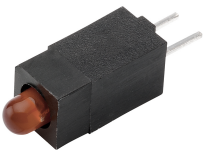
Available Options

- Low current, 5 Volt and 12 Volt built-in resistors.
- Bicolor and blue LEDs also offered.

Call factory for ordering information.

Electro-Optical Characteristics and Ratings

Part Number	Emitted Color	Typical Intensity (mcd)	Rated Current (mA)	Continuous Forward Current Max (mA)	Forward Voltage		Reverse Breakdown Voltage Min. (V)	Peak Wavelength (nm)
					Typ. (V)	Max. (V)		
6321F1	Red	15	10	20	1.9	2.6	5	643
6321F5	Green	8.5	10	25	2.1	3.0	5	565
6321F7	Yellow	10	10	25	2.0	3.0	5	583
6321A30	Green	8.5	10	25	2.1	2.7	5	565



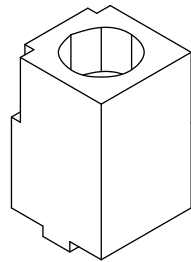
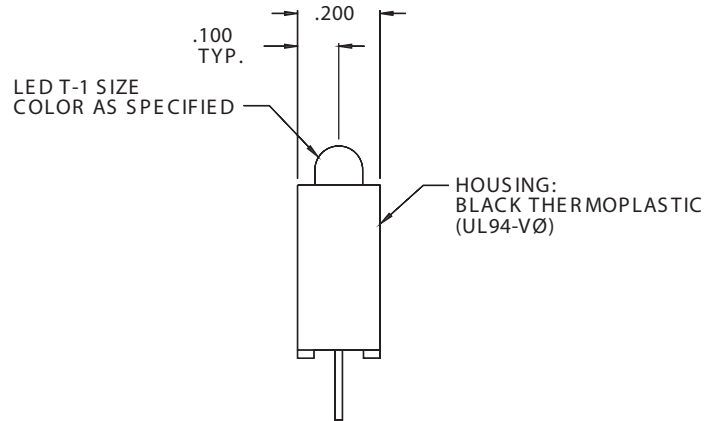
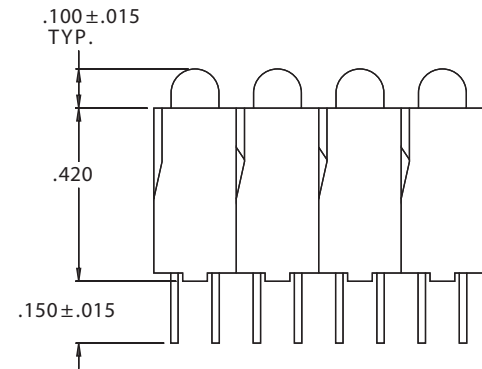
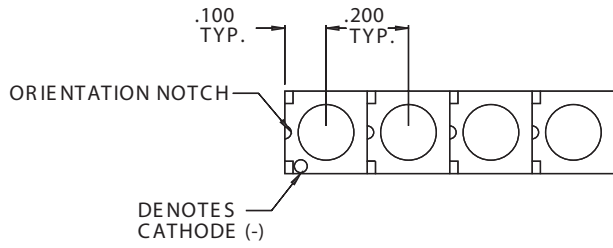
6321F1



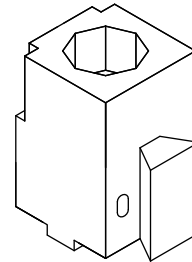
6321A30

Product Dimensions

All dimensions are in inch



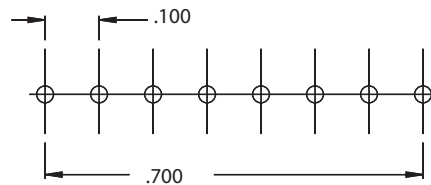
6321F



6321A

Mounting Hole Pattern

All dimensions are in inch



Compliances and Approvals



Mouser Electronics

Authorized Distributor

Click to View Pricing, Inventory, Delivery & Lifecycle Information:

VCC:

[6321F7](#) [6321F5](#) [6321F1](#)