

natural^{led}

PRODUCT CATALOG

2019 Edition X



17

FLAT PANEL DLC



SKU Code	Product Code	Watts	Lumens
▶ 7721	LED-FXPNL40/1X4/835G1	41W	4,376
▶ 7675	LED-FXPNL40/1X4/840G1	41W	4,396
▶ 7686	LED-FXPNL40/1X4/850G1	41W	4,459
▶ 7720	LED-FXPNL40/2X2/835G1	40W	4,381
▶ 7674	LED-FXPNL40/2X2/840G1	40W	4,408
▶ 7685	LED-FXPNL40/2X2/850G1	40W	4,489
▶ 7722	LED-FXPNL50/2X4/835G1	50W	5,135
▶ 7676	LED-FXPNL50/2X4/840G1	50W	5,176
▶ 7687	LED-FXPNL50/2X4/850G1	50W	5,301

See Accessories pg 52

▶ DLC



18

FLAT PANEL DLC Premium



SKU Code	Product Code	Watts	Lumens
▶ 9220	LED-FXPNL26/1X4/840	26W	3,250
▶ 9219	LED-FXPNL28/2X2/840	28W	3,500
▶ 9221	LED-FXPNL36/2X4/840	36W	4,500

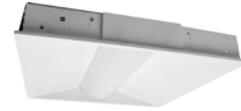
See Accessories pg 52

▶ DLC Premium



19

TROFFER DLC Premium



SKU Code	Product Code	Watts	Lumens
▶ 9235	LED-FXTF20/2X2/835G1	20W	2,540
▶ 9236	LED-FXTF20/2X2/840G1	20W	2,600
▶ 9237	LED-FXTF20/2X2/850G1	20W	2,620
▶ 9238	LED-FXTF30/2X4/835G1	30W	3,810
▶ 9239	LED-FXTF30/2X4/840G1	30W	3,900
▶ 9240	LED-FXTF30/2X4/850G1	30W	3,900
▶ 9241	LED-FXTF45/2X4/835G1	45W	5,715
▶ 9242	LED-FXTF45/2X4/840G1	45W	5,850
▶ 9243	LED-FXTF45/2X4/850G1	45W	5,850

See Accessories pg 48, 52

▶ DLC Premium



20

TROFFER (Retrofit) DLC Premium



NEW



SKU Code	Product Code	Watts	Lumens
▶ 7779	LED-FXRTF25/2X2/835	25W	3,125
▶ 7780	LED-FXRTF25/2X2/840	25W	3,125
▶ 7704	LED-FXRTF30/2X4/835	30W	3,840
▶ 7705	LED-FXRTF30/2X4/840	30W	3,840
▶ 7781	LED-FXRTF42/2X4/835	42W	5,250
▶ 7782	LED-FXRTF42/2X4/840	42W	5,250

▶ DLC Premium



12

FLAT PANEL



SKU Code	Product Code	Description
P10096	MT-1X4BOXG1	1x4 Panel Surface Mount Kit
P10097	MT-2X2BOXG1	2x2 Panel Surface Mount Kit
P10098	MT-2X4BOXG1	2x4 Panel Surface Mount Kit
P10099	MT-PNL-HOOK-4PCS	Earthquake hook for 2x2 and 1x4
P10100	MT-PNL-HOOK-6PCS	Earthquake hook for 2x4
P10228	MT-2x2FMBOX	Flange Mount Box 2x2
P10229	MT-2x4FMBOX	Flange Mount Box 2x4
K7333222	FXPNL-BAEM-MT1FT	Emergency driver w/bracket 1x4 panel
K7333221	FXPNL-BAEM-MT2FT	Emergency driver w/bracket 2x2/2x4 panel
P10147	MT-2X2FMBOX	Flange Mount Box 2x2
P10144	MT-2X4FMBOX	Flange Mount Box 2x4

Fits Flat Panel Series

Earthquake hooks are pre-installed

An additional installation fee will be applied per fixture

13

TROFFER



SKU Code	Product Code	Description
K7334225	FXTF-BAEM-MT	EM Driver + bracket
K225091	PLT/FXTF/MC05	Motion Sensor + Mounting Plate
P10228	MT-2X2FMBOX	Flange Mount Box 2x2
P10229	MT-2X4FMBOX	Flange Mount Box 2x4
P10147	MT-ACC-4FT	Aircraft Cable - 4ft
P10144	MT-ACC-10FT	Aircraft Cable - 10ft

An additional installation fee will be applied per fixture

14

ROUND HIGH BAY



SKU Code	Product Code	Description
P10156	CVR-16HBR/LS/WH	High/Low Bay Skirt with Diffuser
K150148	PLT/HBR/MC31	Motion Sensor for Round HB
K7333160	FXHBR-BAEM-MT	LED Fixture Emergency Driver 120-277V
P10203	BALED-LHP-150M062	480V Ballast Driver for 150W

An additional installation fee will be applied per fixture

15

LINEAR Highbay



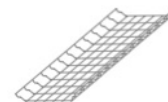
SKU Code	Product Code	Description
P10092	MT-YK-HBL22	Yoke Mount 3/4" NPT for Rigid Pendant
P10093	MT-YK-HBL44	Yoke Mount 3/4" NPT for Rigid Pendant
P10094	WG-HBL22/WH	WireGuard for 22"
P10095	WG-HBL44/WH	WireGuard for 44"
P10086	SEN-LOS-509-SFG	Motion/Photocell On-Off Aisle Lens
P10088	SEN-LOD-500-SFG	Motion/Photocell 0-10V Aisle Lens
P10162	SEN-LRD-509-SFG	Remote Controllable Sensor 0-10V Aisle
P10087	SEN-LOS-509-SFC	Motion/Photocell On-Off Area Lens
P10089	SEN-LOD-500-SFC	Motion/Photocell 0-10V Area Lens
P10163	SEN-LRD-509-SFC	Remote Controllable Sensor 0-10V Area
P10164	SEN-SRP280	Remote Control for P10162/P10163/P10153
P10153	SEN-LRD-609-SAC	Motion/Photocell 0-10V Internal 100-277V IP65
P10257	SEN-ON-LRD-509-SFC	NET Motion Remote 0-10V; 3X C Lens
P10256	SEN-ON-LRD-509-SFG	NET Motion Remote 0-10V; Aisle Lens
P10258	SEN-ON-LRD-509-SWC	NET Motion Remote 0-10V; 3X C Lens
P10259	SEN-ON-SRP281	NET Remote setting controller
P10260	SWCH-ON-PBD-705	NET Wireless wall switch/ dimmer

Fits our Linear Highbay (LHB) Series

An additional installation fee will be applied per fixture

16

HIGHBAY



SKU Code	Product Code	Description
P10247	WG-HBE110/24/WH	WireGuard for 110W
P10248	WG-HBE162/24/WH	WireGuard for 162W

Fits our Highbay (HBE) Series

An additional installation fee will be applied per fixture